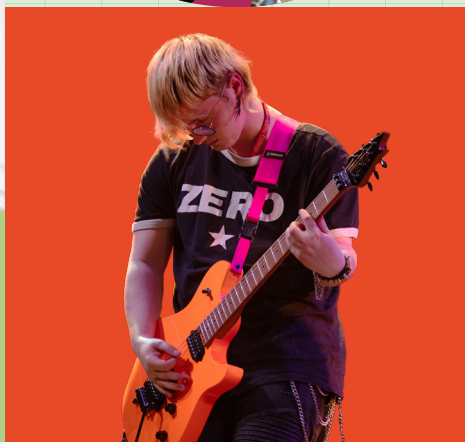




16-18 year olds
School Leaver
Prospectus

2026



Welcome to Leeds City College



At Leeds City College we aim to provide the best possible experience so that every student is able to develop and progress in their chosen course of study.

Choosing to study with us means that you will be learning at a college that is rated 'Good' with 'Outstanding' features by Ofsted.

We are committed to developing courses that match local and regional skills needs so that you are well-equipped for your future career. From full-time and part-time courses to apprenticeships and traineeships, we cover almost all subject areas.

We work with some of the best employers and organisations in the region, many of whom are helping us design and deliver our courses and providing work placement and apprenticeship opportunities that will give you real world experience.

Providing diverse and inclusive spaces for you to study in is at the heart of what we do, and with us, you will have world-class facilities to train in. You will have access to teaching staff who will provide insight as you make decisions about your future and who will build your expertise by drawing from their own, allowing you to progress to your next step with confidence in your ability.

You will also find a wealth of extra-curricular activities beyond the classroom that are designed to develop your transferable skills, as well as additional support for your studies and wellbeing, should you need it.

We're confident that no matter where you are in your educational journey, we can help you reach your full potential.

We look forward to welcoming you on campus.

Bill Jones

Executive Principal – Leeds City College



Open Events

Discover what's in store at our open events

Wondering what the next step in your education will be? Whether you're dreaming of university or seeking your ideal career, you can explore all your options at one of our upcoming open events. You can get a feel for life at the College, discover our facilities and talk to our expert tutors about your course choices.

See our upcoming Open Events

Click here



Quieter Open Events

Alternatively, students who would benefit from a less stimulating environment are invited to attend our quieter open events. These are designed to provide the time and space for detailed conversations about your transition to college. Limited visitor numbers ensure a quieter environment in which to start shaping your future.

See our upcoming Open Events

Click here



Book your place now:



Visit: leedscitycollege.ac.uk/events



Call: 0113 386 1997

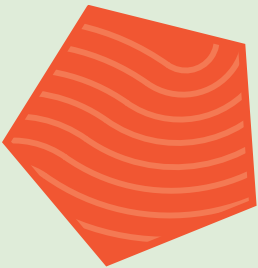


Email: EventsMarketing@luminate.ac.uk

We also host apprenticeship open events where you can meet potential employers and apply for an apprenticeship.

Apprenticeship Open Events

Meet potential employers and explore apprenticeship opportunities at our Open Events. For more details, including dates, and **how to book**, please visit the **Events** page of our website.



See our upcoming Open Events



Parent & Carer Event

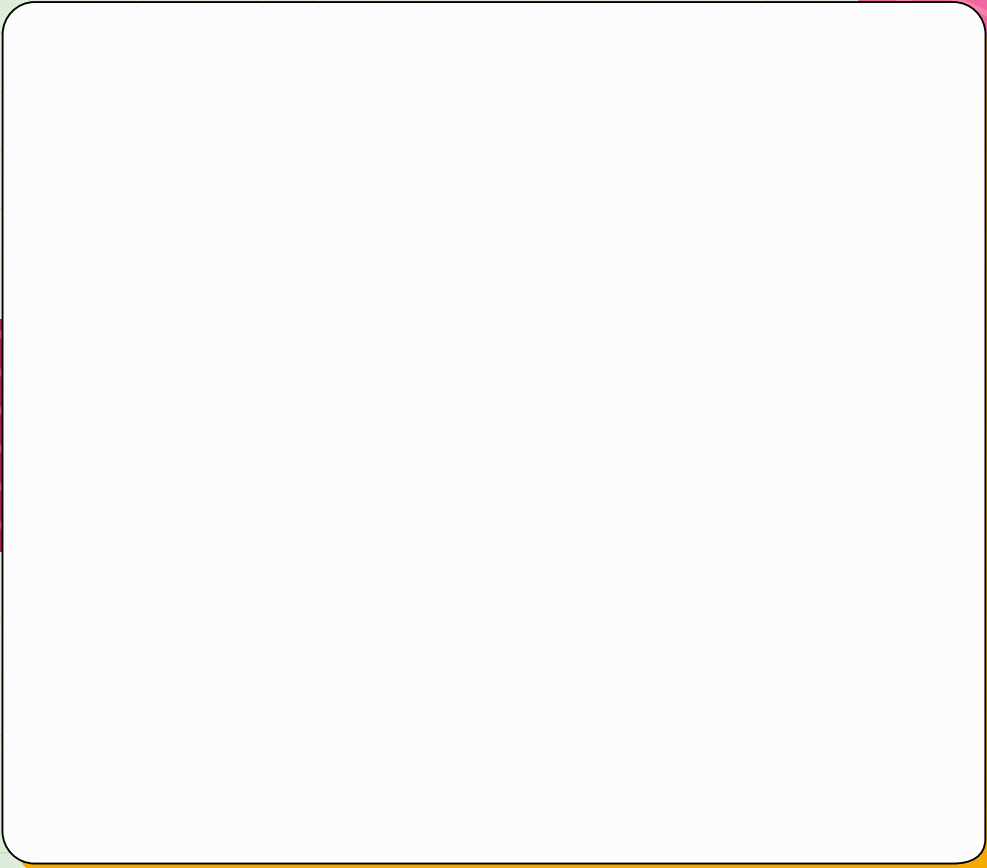
Our Parent & Carer Event, for those looking after students who have been offered a place, is an ideal opportunity to learn more about Leeds City College. Parents and carers will meet key staff from curriculum, SEND, Safeguarding and Student Life teams.

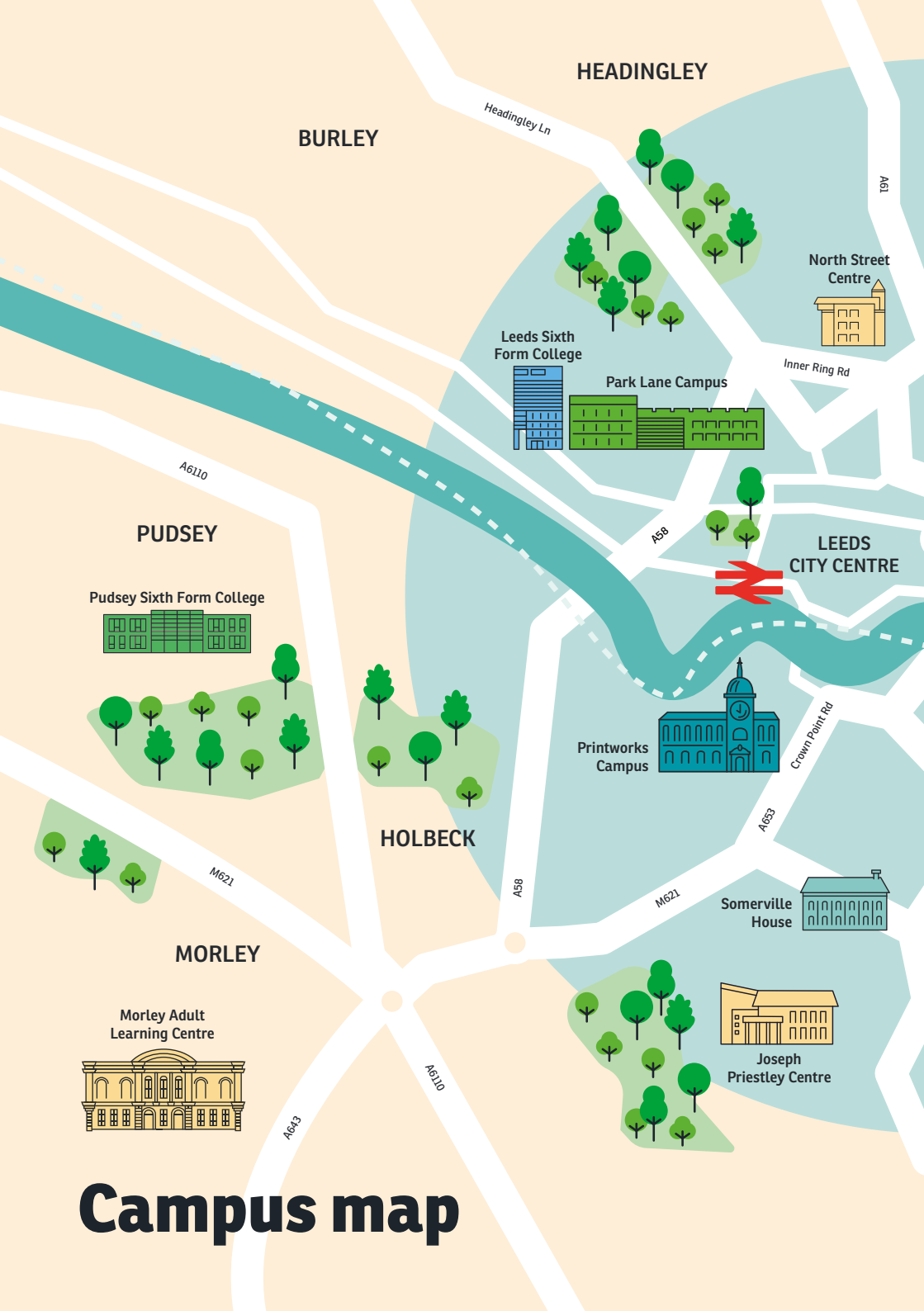
If you would like any additional support or assistance prior to, or during, an open event, please email **EventsMarketing@luminare.ac.uk**



Contents

Creative Media & Digital Arts
Music & Performance Production
Visual Arts





HEADINGLEY

BURLEY

Headingley Ln

A61

North Street
Centre

Inner Ring Rd

Leeds Sixth
Form College

Park Lane Campus

PUDSEY

Pudsey Sixth Form College

A58

LEEDS
CITY CENTRE



Printworks
Campus

Crown Point Rd

A653

HOLBECK

A58

M621

Somerville
House

MORLEY

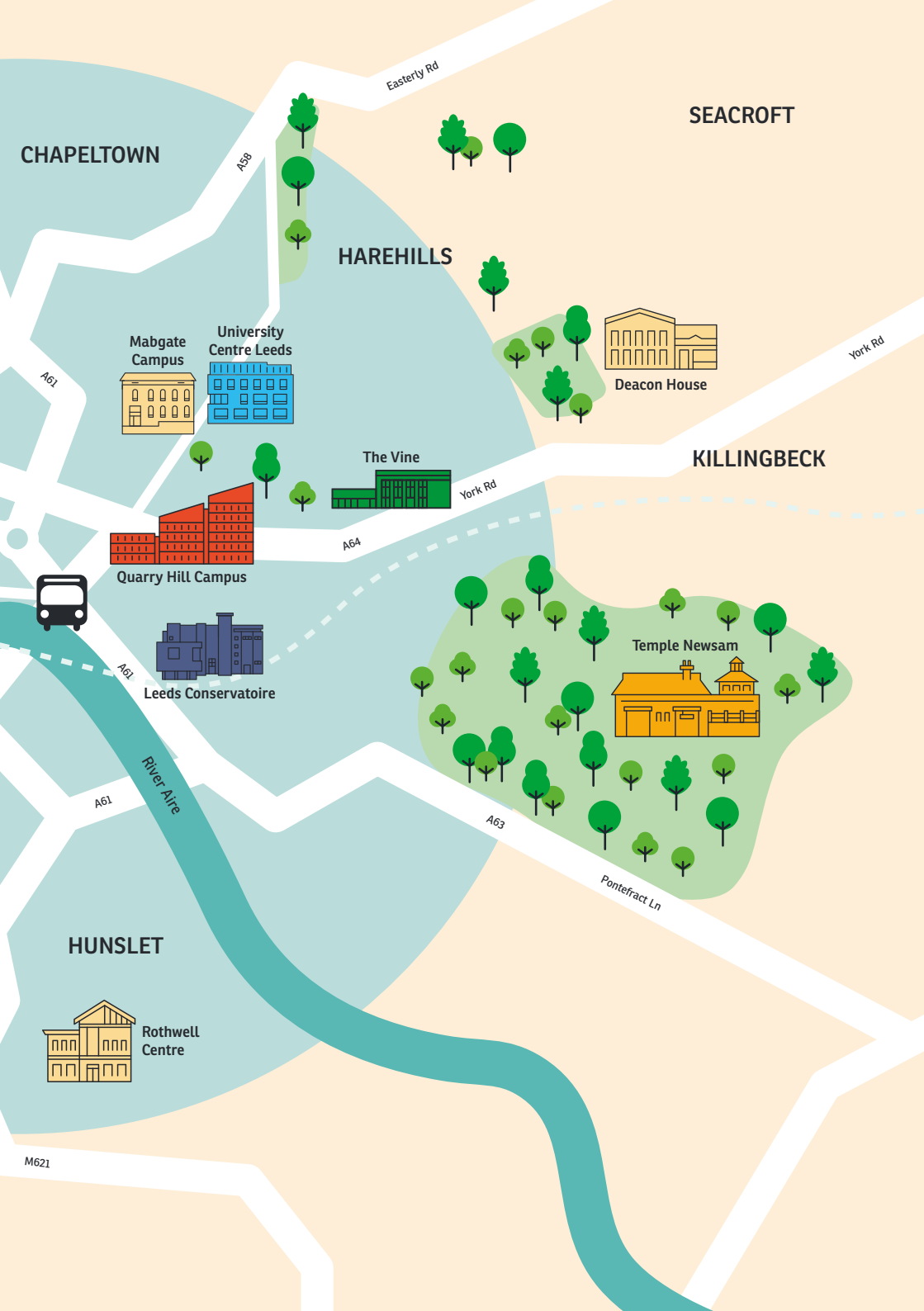
Morley Adult
Learning Centre

Joseph
Priestley Centre

A643

A610

Campus map



CHAPELTOWN

SEACROFT

HAREHILLS

Mabgate Campus

University Centre Leeds

Deacon House

The Vine

KILLINGBECK

Quarry Hill Campus

Leeds Conservatoire

Temple Newsam

HUNSLET

Rothwell Centre

River Aire

Easterly Rd

York Rd

A64

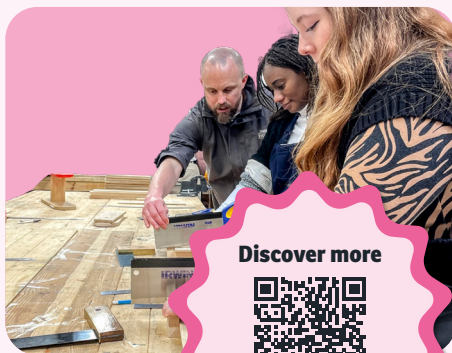
A63

Pontefract Ln

M621

Mabgate Campus

Nestled within a refurbished warehouse, Mabgate puts the emphasis on creativity and wellbeing, supporting students' development and progression. This fully equipped workshop boasts **state-of-the-art joinery machines** alongside **screen printing facilities**. Students participate in social enterprise projects with RE: and gain first-hand experience of how a circular economy can be created, focusing on recycling and upcycling.



Campus address:

Mabgate Campus

74-76 Mabgate, Leeds LS9 7EA

Mabgate Campus is home to:

- ◆ RE: Workshops

New to Mabgate Campus:

- ◆ University Centre Leeds Campus
- ◆ Mabgate Centre for Adult Learning



Walking Distances:

19 minute walk from the train station

8 minute walk from the bus station



Scan for directions



Park Lane Campus

Park Lane, located within easy walking distance of parks, cafes and shops, is an innovative place to study. Our state-of-the-art spaces enhance learning, a prime example being our **STEM labs** which include a pharmacy space with **consultation room** and **dispensary**. We're committed to sustainability and our **ECO-POWR gym** converts students' energy into electricity which is used to power devices within the college. In addition to the gym, students have spaces to relax and take a break from studies with room to read or catch up with friends over a game of table tennis.

Campus address:

Park Lane Campus

Park Lane, Leeds LS3 1AA

Park Lane Campus is home to:

- ◆ Science
- ◆ Sport
- ◆ Leeds Sports Connect
- ◆ Talented Athletes Scholarship Scheme (TASS)
- ◆ Future Pathways
- ◆ 14+ Academies
- ◆ 14-16 Skills Programme

Leeds Sixth Form College, including:

- ◆ A Levels
- ◆ Step Up to A Levels

Discover more



Walking Distances:

15 minute walk from the train station

21 minute walk from the bus station



Scan for directions



Printworks Campus

In the Southbank area of Leeds, the listed building of our Printworks Campus provides a striking backdrop for students to learn and train in realistic, industry-standard environments. The campus is home to **innovative digital labs**, **world-class kitchens**, **tailored engineering workshops** and **cutting-edge studios**, as well as providing real working environments in the commercial **Printworks Kitchen & Bar** and the **Salon & Spa**, both open to the public.

Campus address:

Printworks Campus
Hunslet Road, Leeds LS10 1JY

Printworks Campus is home to:

- ◆ Animal Care & Land Management (some classroom delivery at Printworks Campus and practical learning at Temple Newsam Campus)
- ◆ Business
- ◆ Catering & Hospitality
- ◆ Digital & IT
- ◆ Engineering & Manufacturing
- ◆ Hair, Beauty & Media Makeup
- ◆ Sustainable Technologies & Motor Vehicle
- ◆ Travel & Tourism
- ◆ Apprenticeships (more information on **page 86**)

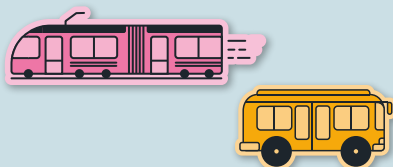
Discover more



Walking Distances:

14 minute walk from the train station

15 minute walk from the bus station



Scan for
directions



Quarry Hill Campus

Reflecting the vibrancy of Leeds' Cultural Quarter through its innovative design, Quarry Hill prides itself on strong industry links and cutting-edge facilities. The campus boasts **specialist childcare** and **public training resources**, **health science labs** and a **practical care suite**, **creative digital technologies**, and **industry-standard studios and theatres**.



Discover more



Campus address:

Quarry Hill Campus
Playhouse Square, Leeds LS2 7BS

Quarry Hill Campus is home to:

- ◆ Creative Media & Digital Arts, Music & Performance Production, Visual Arts
- ◆ Education & Early Years
- ◆ Health Science & Social Care
- ◆ Public Services



Walking Distances:

14 minute walk from the train station

2 minute walk from the bus station



Scan for
directions



Somerville House

Situated near our Printworks Campus, Somerville House provides a diverse range of amenities, tailored for learners aged 16 to 24 who are keen to enhance their personal development and employability skills alongside English and maths. The campus features **dedicated spaces for projects and events, social hubs and cafe facilities**, and **wheelchair access** is ensured throughout the campus.



Campus address:

Somerville House
Leathley Road, Leeds LS10 1BG

Somerville Campus is home to:

- ◆ Enterprise & Employability
- ◆ RE: (workshop delivery at Mabgate Campus)



Walking Distances:

19 minute walk from the train station

20 minute walk from the bus station



Scan for directions



Temple Newsam Campus

Get hands-on practical understanding of raising farm animals and observing wildlife at our Temple Newsam Campus, on the picturesque Home Farm. A great opportunity to experience one of Europe's **largest working rare breed farms**, students will also have access to the **animal care centre**, which is home to **small mammals and exotic animals**. Temple Newsam is also the home of our horticulture students, studying gardening and landscape design courses; set in **1000 acres of parkland, ancient woodland and gardens**, nature really is your classroom!

Visit Temple Newsam and explore the farm at one of our open events. Book now:

See our upcoming Open Events



Click here



Campus address:

Temple Newsam Campus
Temple Newsam Road, Leeds LS15 0BG

Discover more



Temple Newsam Campus is home to:

- ◆ Animal Care & Land Management
- ◆ Apprenticeships (more information on **page 86**)

Walking Distances:



20 minute walk from the bus stop (buses from Selby Road and New Temple Gate are available from Leeds city centre)

Campus bus – this service departs Leeds bus station daily, going directly to Temple Newsam without any stops, and costing only £5 per learner per week (free if you're on a bursary)

Scan for directions



Entry Requirements

If you don't meet our exact entry requirements, don't worry! We'll always consider your personal circumstances and help you find the best course for you.

It's not a problem if you haven't got your GCSE Maths and English at grade 4. They'll be built into your course alongside your subject.

Due to their content, some courses may need you to have specific GCSEs at grade 4 or above. This will be explained when you speak to one of your department tutors. Entry requirements can vary for different courses, but below is a general indication of required grades.



Entry

Level 1

You typically need to have three/four GCSEs.

Level 2

You typically need to have three/four GCSEs grade 9–3.

Level 3

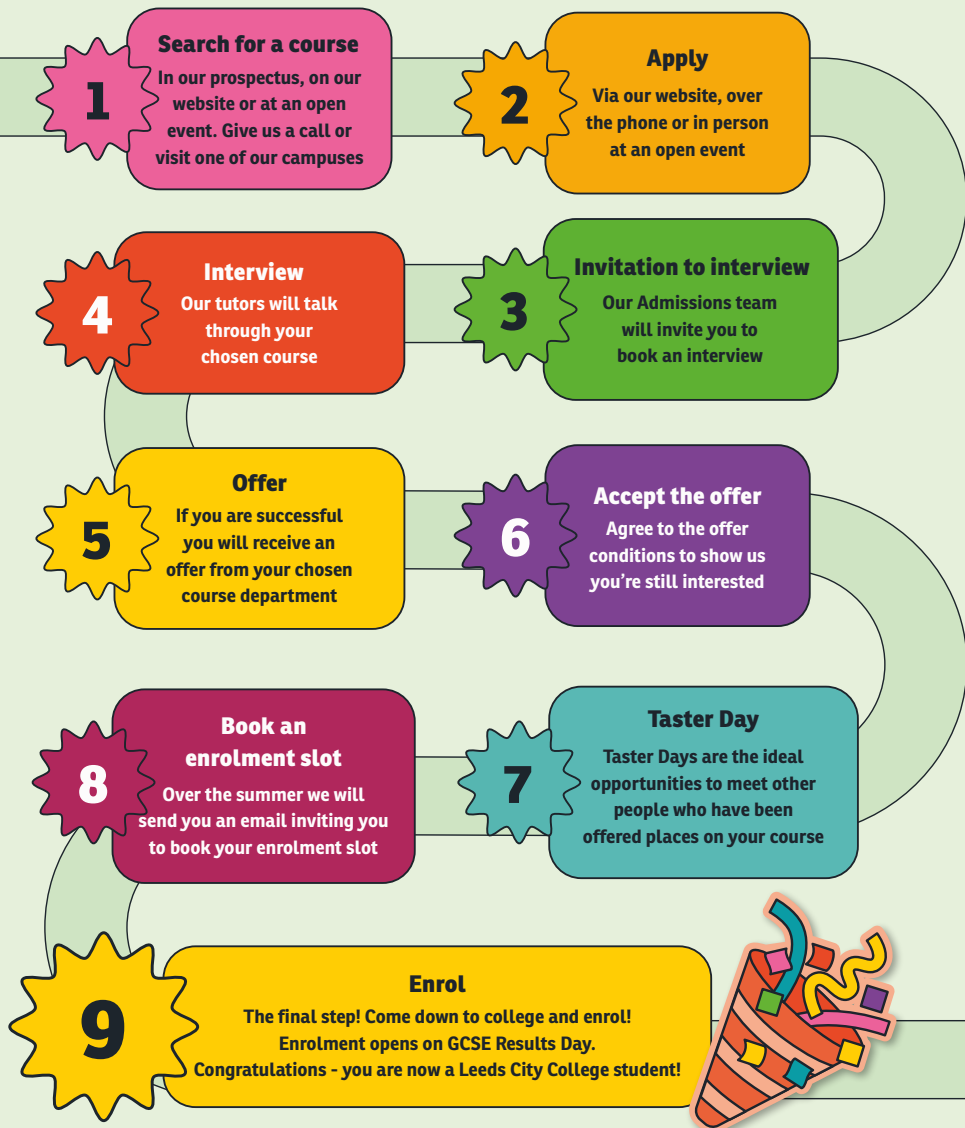
You typically need to have five GCSEs or equivalent grade 9–3, including maths and English minimum grade 5/4.

Level 4

You typically need to have A Levels or a Level 3 Diploma or Access qualification. NVQ Level 3 may be accepted in some cases.

Your Journey

Follow these simple steps for your journey to becoming a Leeds City College student.



What Our Students Say

Why did you choose Leeds City College?



They had
the exact
course I
wanted

The variety
and the mix
of practical
and sit down
lessons

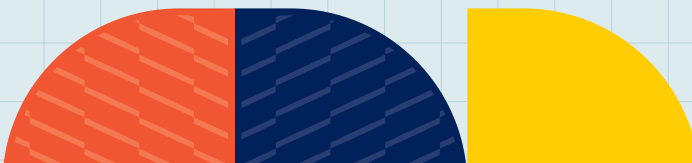
Close to
where I live
with good
facilities

What's your favourite thing about your course?

The teachers
push you
and help you
to do better

The practical
working on
the cars

The making
of products



What is your favourite thing about Leeds City College?

“

The smaller
classes and
closeness it
creates

”

“

The days and
flexibility
- also the
variety

”

“

The use of
workshops
to aid
knowledge

”

What advice would you give to someone who hasn't made up their mind about applying?

“

Try
something,
you may
enjoy it

”

“

To give
it a try

”

“

Just go
for it

”



Animal Care & Land Management

Do you want to work with animals? Or are you interested in gardening and landscaping? Whether it's green-fingered skills or animal care, our Animal Care and Land Management department has a course for you. From reptiles to poultry, growing plants to caring for domestic animals, our courses prepare you for employment or further study in your chosen field. Based at the scenic Home Farm at Temple Newsam, our courses allow students to put theory into practice in a natural environment.



Location: Temple Newsam Home Farm



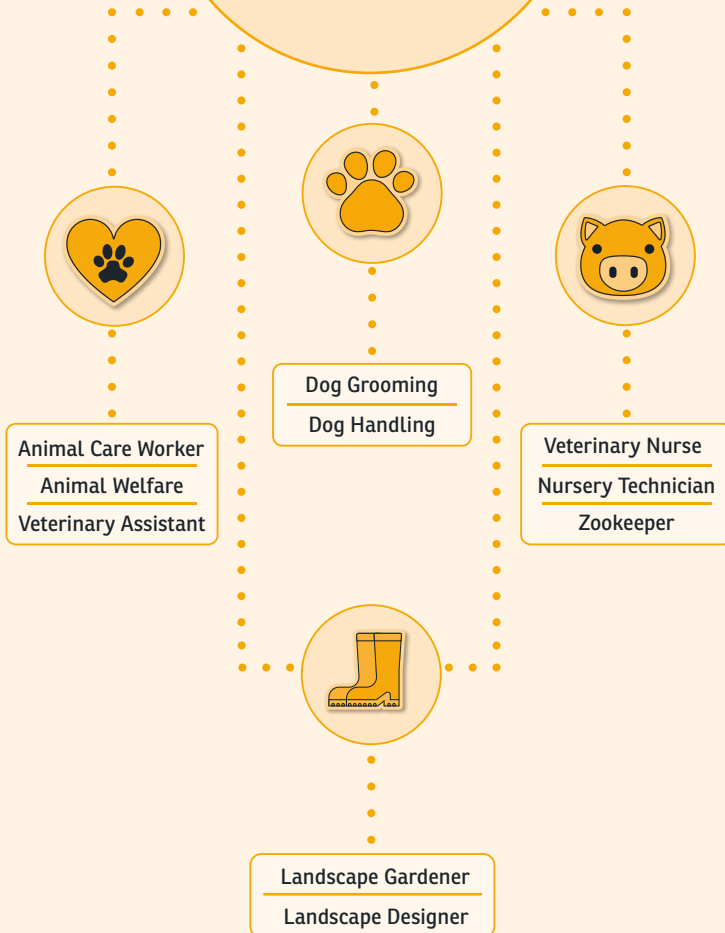
Follow us on social: @animalcarelandmanagement



Apply now!



Animal Care & Land Management Careers



Courses

Entry Level	<ul style="list-style-type: none"> ◆ Skills for Working Life (Animals)
Level 1	<ul style="list-style-type: none"> ◆ Land-Based Studies (Animal Care Pathway) ◆ Land-Based Studies (Horticulture Pathway)
Level 2	<ul style="list-style-type: none"> ◆ Animal Care ◆ Horticulture
Level 3	<ul style="list-style-type: none"> ◆ Horticulture
T Level	<ul style="list-style-type: none"> ◆ Animal Management



For full course details, including entry requirements, scan the QR code or visit our website





This course, to me, is just what I was kind of made for. Not to sound cliché or anything like that, but it's literally the perfect thing for me. I finally feel like this is my purpose. I love it so much and it's just one of the best things ever.



Discover more



Veterinary Nurses

Average salary

£24,971*



*Labour market data is sourced from Lightcast (<https://lightcast.io/uk>) 2025, LMI for All (<https://www.lmiforall.org.uk/>) Data referenced relates to the Leeds City Region and is correct as of June 2025.



Business

Taught at our Printworks Campus, our business courses equip you with the skills and knowledge you need to forge a path in today's commercial world. With diplomas and certificates on offer, our courses can take you from business fundamentals to specialised areas such as team leadership and applied law. If you're looking for hands-on learning, we have business administration, team leader, retail, and customer experience apprenticeships that could be exactly what you're looking for.



Location: Printworks Campus

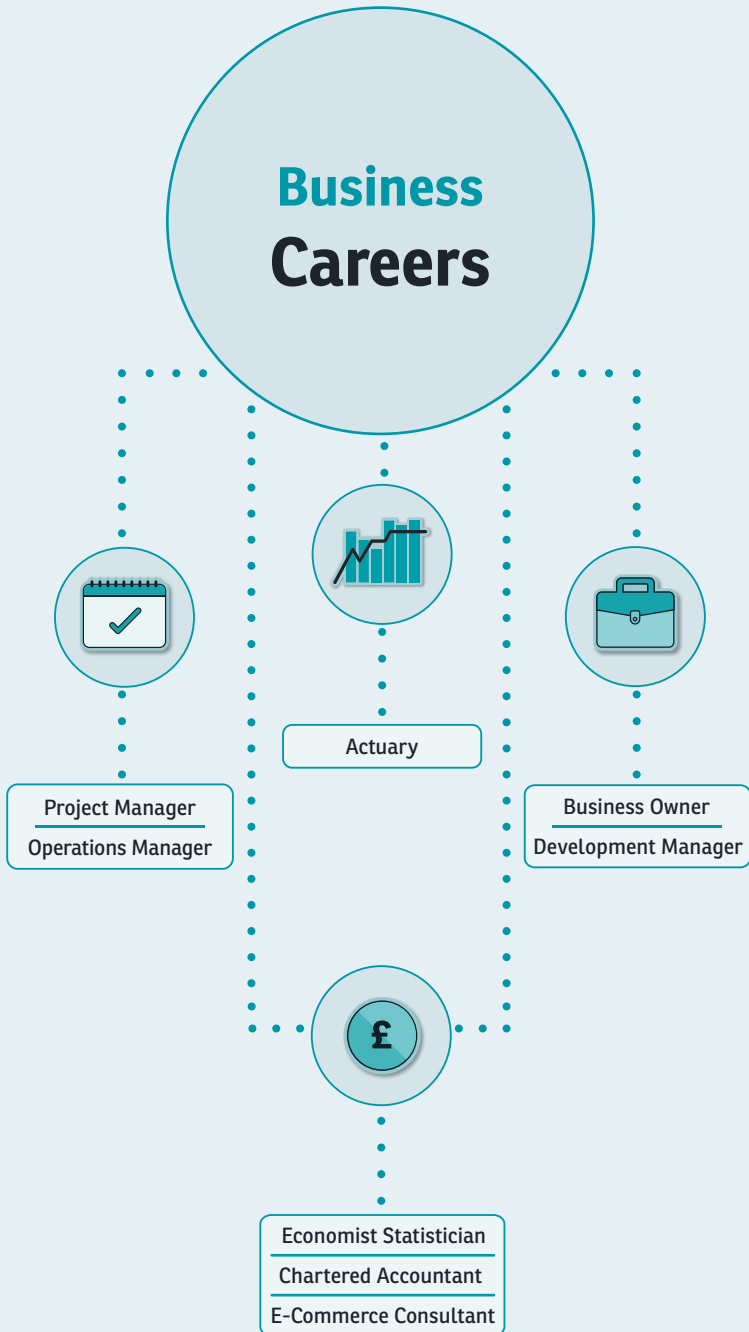


Follow us on social: @BusinessLCC



Apply now!





Courses

Level 2	◆ Business & Enterprise
Level 3	◆ Business
T Level	◆ Accounting ◆ Management & Administration ◆ Marketing

For full course details, including entry requirements, scan the QR code or visit our website



T-LEVELS

For more information about T Levels, see page 90





You get to work on so many different things and so many different topics and cover everything in such a short amount of time. I mean I only got here in September and I've already covered every topic you could probably think of within this little time: it's good!



Business and Financial Project Management Professionals

Average salary

£47,199^{*}

£

Business Sales Executives

Average salary

£32,482^{*}

^{*}Labour market data is sourced from Lightcast (<https://lightcast.io/uk>) 2025, LMI for All (<https://www.lmiforall.org.uk/>) Data referenced relates to the Leeds City Region and is correct as of June 2025.



Catering & Hospitality

Whether you dream of concocting culinary delights or creating the perfect experience for guests, our courses could make your dreams a reality. Develop the practical skills and theoretical knowledge required to prosper as a future chef, pastry chef, hospitality manager or food critic. Courses are taught in first-class facilities at our Printworks Campus. You will learn your craft in world-class kitchens, perfect your pastry in our fully equipped patisserie room and hone your hospitality skills in our flourishing commercial restaurant.



Location: Printworks Campus



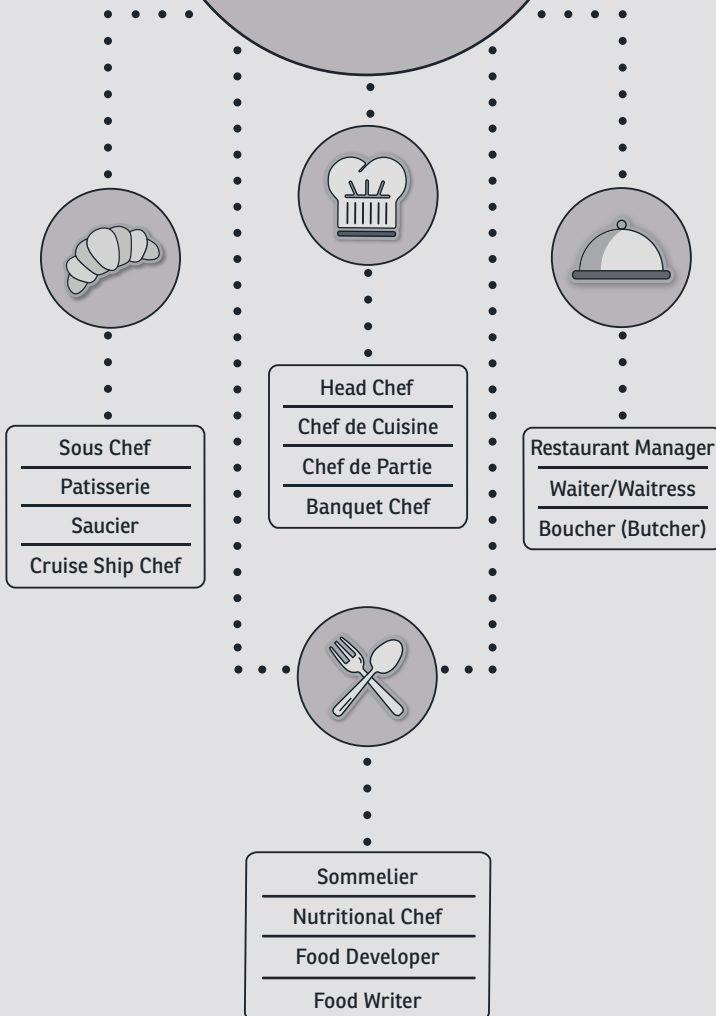
Follow us on social: @LCC_TravelFoodDrink



Apply now!



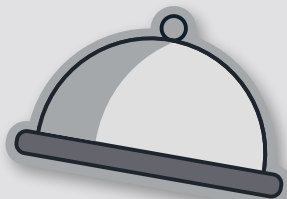
Catering & Hospitality Careers



Courses

Entry Level	◆ Hospitality & Catering
Level 1	◆ Culinary Skills
Level 2	<ul style="list-style-type: none"> ◆ Culinary Skills ◆ Food & Beverage Service ◆ General Patisserie & Confectionery ◆ Professional Patisserie & Confectionery
Level 3	<ul style="list-style-type: none"> ◆ Advanced Professional Cookery ◆ Hospitality, Supervision & Leadership ◆ Professional Patisserie & Confectionery

For full course details, including entry requirements, scan the QR code or visit our website



“

College is a fun experience because everyone is really supportive, the teachers are really supportive and they'll help you when you need help.

”



Restaurant and Catering Establishment Managers and Proprietors

Average salary

£29,596 *

Chefs

Average salary

£25,908 *

*Labour market data is sourced from Lightcast (<https://lightcast.io/uk>) 2025, LMI for All (<https://www.lmiforall.org.uk/>) Data referenced relates to the Leeds City Region and is correct as of June 2025.



Computing & Digital

From behind-the-scenes app and website programming to database administration, our courses help you with your journey in education or into employment. Whether you're interested in computer science, cyber security, or coding, we have courses to match your interests. From introductory certificates to more advanced, specialised programmes, you can choose from a wide range of digital and IT related courses. You will have access to industry-standard tools and software, ensuring you get the best preparation for entering this fast-paced industry.



Location: Printworks Campus



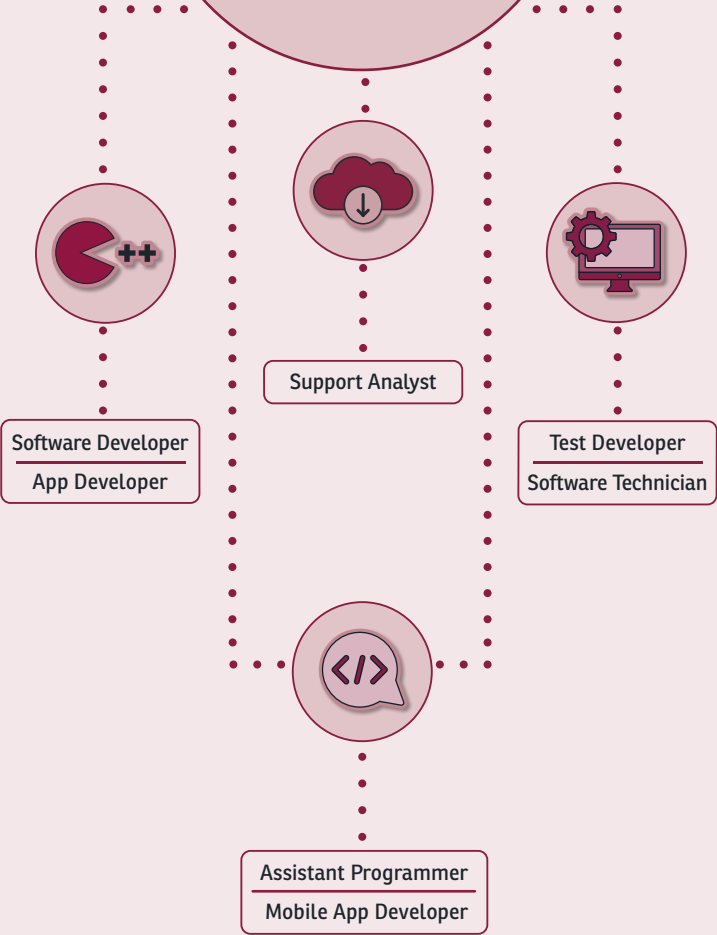
Follow us on social: @LCCDigitalandIT



Apply now!



Computing & Digital Careers



Courses

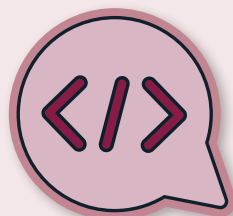
Level 1	◆ Coding, Multimedia & Web Development
Level 2	◆ Software, Web, Graphics & Multimedia Development
Level 3	◆ Digital & IT Skills: Project Management, Social Media Development & Cyber Security
Level 3	◆ Software Development: Network Engineering, Project Management & Robot Technology
T Level	◆ Digital Support & Security: Digital Infrastructure, Cyber Security, Digital Support Services and Network & Cloud Technology ◆ Digital Software Development: Software Programming, Systems Design & Development & Cyber Security

For full course details, including entry requirements, scan the QR code or visit our website



T-LEVELS

For more information about T Levels, see page 90



“

The thing that I probably enjoyed the most is meeting all the new people, so it's just nice to be around like all different types of people and the diversity here.

”



**IT Business Analysts,
Architects and Systems
Designers**

Average salary

£51,396^{*}

**Programmers and
Software Development
Professionals**

Average salary

£43,723^{*}

*Labour market data is sourced from Lightcast (<https://lightcast.io/uk>) 2025, LMI for All (<https://www.lmiforall.org.uk/>) Data referenced relates to the Leeds City Region and is correct as of June 2025.



Creative Arts

Creative Media & Digital Arts

Creative Media & Digital Arts is a department of more than 500 learners and over 30 teachers delivering media, TV and film, games design, animation, esports and journalism at our state-of-the art Quarry Hill Campus. Our highly skilled team of specialist tutors and support staff takes pride in developing our students' personal and employability skills to prepare them for their future life and work.

Location: Quarry Hill Campus



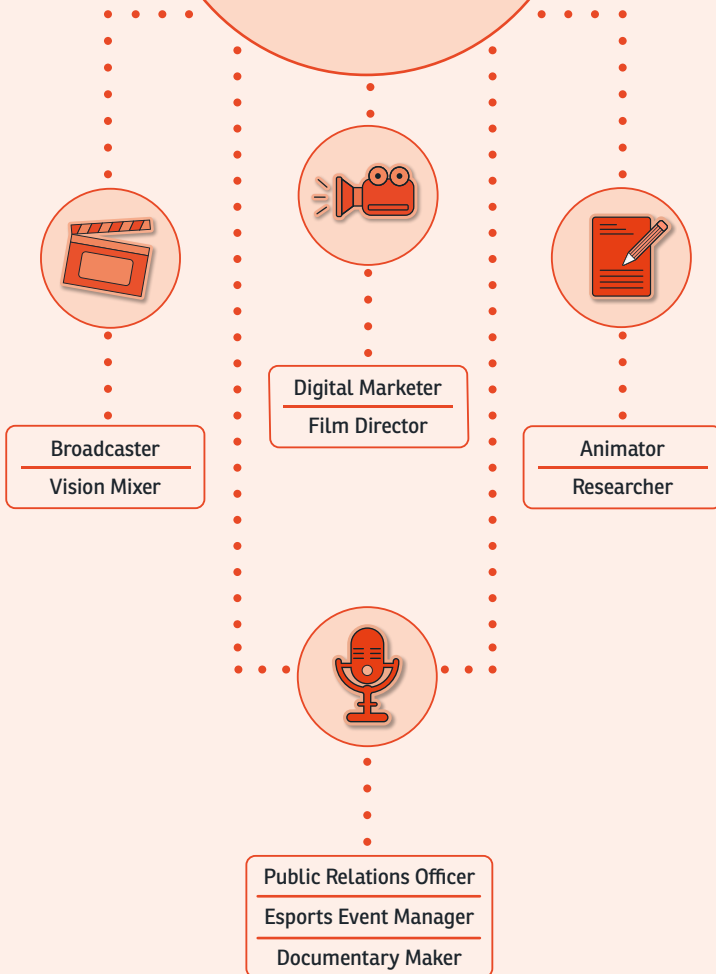
Follow us on social: @CreativeartsLCC



Apply now!



Creative Media & Digital Arts Careers



Courses

Level 1	<ul style="list-style-type: none"> ◆ Computer Games Skills
Level 2	<ul style="list-style-type: none"> ◆ Computer Games Skills ◆ Creative Media Skills
Level 3	<ul style="list-style-type: none"> ◆ Animation ◆ Computer Games Development ◆ Esports ◆ Journalism ◆ TV & Film
T Level	<ul style="list-style-type: none"> ◆ Digital Production, Design & Development ◆ Media, Broadcast & Production

For full course details, including entry requirements, scan the QR code or visit our website



T-LEVELS

For more information about T Levels, see page 90





The course has helped me develop:
I've been more social towards my team and other people. And it's helped me develop my comms with more competitive gameplay. People on the course are very supportive of you and in the games they are helpful.



**Newspaper and
Periodical Broadcast
Journalists and
Reporters**

Average salary

£29,883^{*}



^{*}Labour market data is sourced from Lightcast (<https://lightcast.io/uk>) 2025, LMI for All (<https://www.lmiforall.org.uk/>) Data referenced relates to the Leeds City Region and is correct as of June 2025.



Creative Arts

Music & Performance Production

Music & Performance Production is about what happens on the stage, behind the stage and in the studios. Our performers, engineers, designers and managers create live performances and recorded work in many different disciplines and then bring it to life for an audience.

Location: Quarry Hill Campus



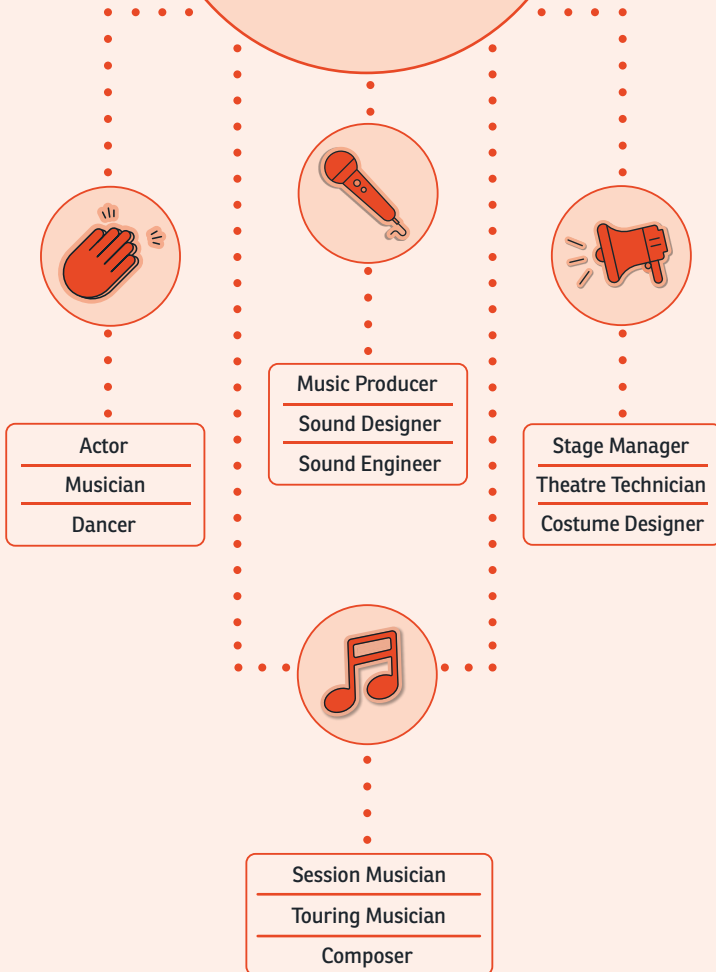
Follow us on social: @CreativeartsLCC



Apply now!



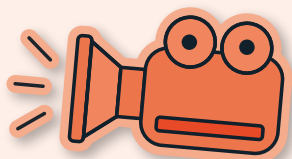
Music & Performance Production Careers



Courses

Level 1	<ul style="list-style-type: none"> ◆ Music Performance ◆ Performing Arts
Level 2	<ul style="list-style-type: none"> ◆ Acting Skills ◆ Dance Skills ◆ Music Performance Skills ◆ Music Production Skills ◆ Musical Theatre Skills ◆ Theatre Production Skills
Level 3	<ul style="list-style-type: none"> ◆ Music Performance ◆ Acting ◆ Dance ◆ Music Production ◆ Musical Theatre ◆ Theatre Design & Production

For full course details, including entry requirements, scan the QR code or visit our website



“

I decided to study at Leeds City College because I liked the equipment and the rooms that they had, and I liked how it was a whole new space.

”

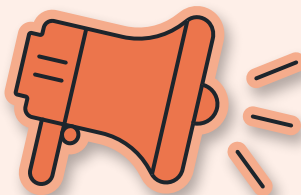
Discover more



**Arts Officers,
Producers and
Directors**

Average salary

£34,897*



*Labour market data is sourced from Lightcast (<https://lightcast.io/uk>) 2025, LMI for All (<https://www.lmiforall.org.uk/>) Data referenced relates to the Leeds City Region and is correct as of June 2025.



Creative Arts

Visual Arts

The Visual Arts department offers study across art and design, graphic design, textiles and photography to over 500 learners. Our exciting sector links provide you with professional experience in your chosen subject area, supported by creative and hands-on learning in our industry-standard facilities.

Location: Quarry Hill Campus



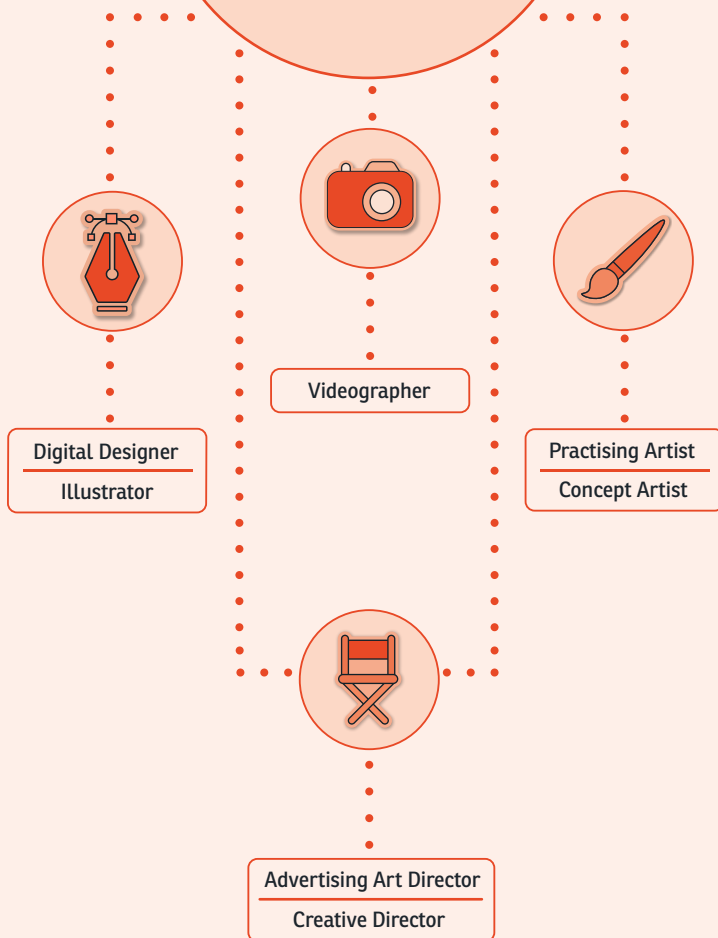
Follow us on social: @CreativeartsLCC



Apply now!



Visual Arts Careers



Courses

Level 2	<ul style="list-style-type: none">◆ Introductory Art & Design◆ Art & Design◆ Visual Arts (Photography & Graphics)
Level 3	<ul style="list-style-type: none">◆ Art & Design◆ Fashion & Textiles◆ Graphic Design◆ Photography



For full course details, including entry requirements, scan the QR code or visit our website





I think it's the fact of being able to progress your creativity and to work on very new ideas - those projects where you just get something new, something you haven't even done before, it helps to expand your mind.



**Graphic and
Multimedia
Designers**

Average salary

£25,017 *

**Clothing, Fashion
and Accessories
Designers**

Average salary

£42,832 *

**Photographers,
Audio-visual and
Broadcasting
Equipment Operators**

Average salary

£27,506 *

Discover more



*Labour market data is sourced from Lightcast (<https://lightcast.io/uk>) 2025, LMI for All (<https://www.lmiforall.org.uk/>) Data referenced relates to the Leeds City Region and is correct as of June 2025.



Education & Early Years

If you're interested in working with children, our courses prepare students to work in the early years and education sectors, from nursery level up to higher education. Teachers come from industry and are able to draw on their experience to demonstrate how the skills being taught apply in the workplace. You'll combine theoretical and practical learning, using the latest technology, with workshops, talks and work placements to provide you with essential skills and experience.



Location: Quarry Hill Campus

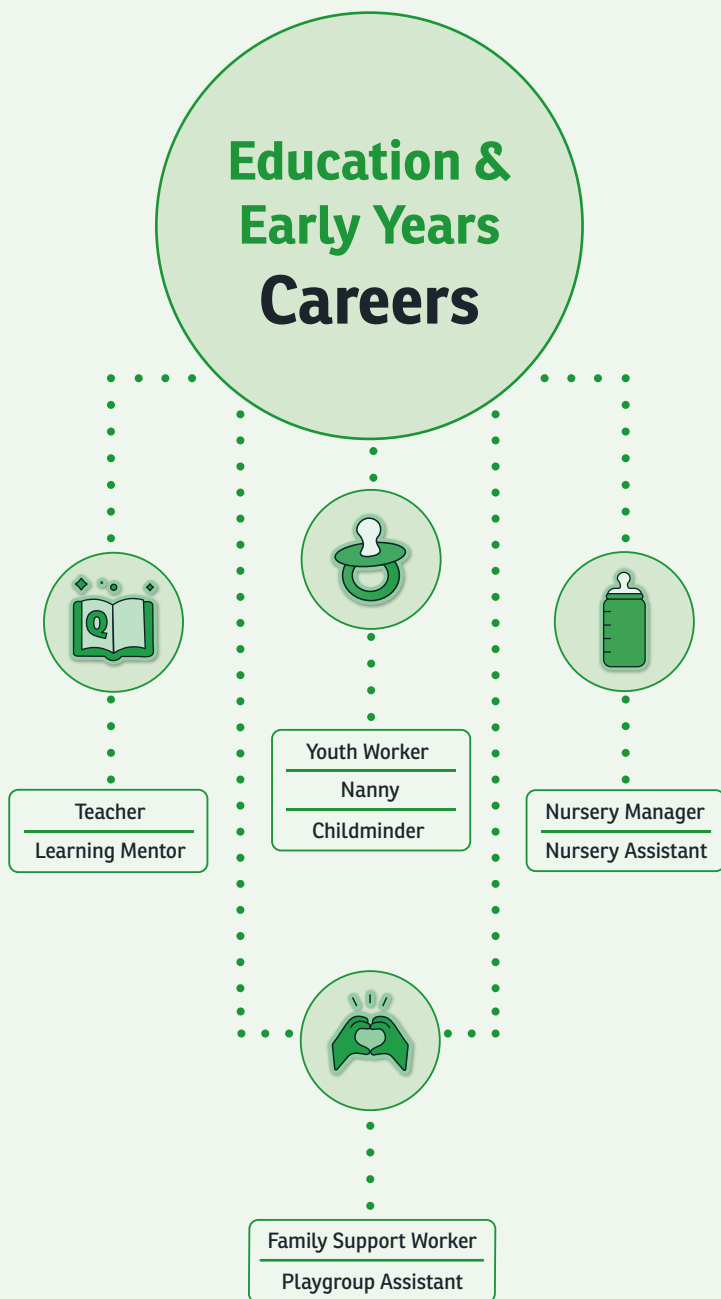


Follow us on social: @EducationChildcareLCC



Apply now!





Courses

Level 1	◆ Caring for Children
Level 2	◆ Early Years Practitioner ◆ Supporting Teaching & Learning
Level 3	◆ Supporting Teaching & Learning
T Level	◆ Education & Early Years

For full course details, including entry requirements, scan the QR code or visit our website



T-LEVELS

For more information about T Levels, see page 90



“

The benefit of the creative stuff is learning different activities that you could do with the children when you're in the setting or learning what activities they actually like to do, or they prefer to do, that will help them with their development...

”

Discover more



Primary Education Teaching Professionals

Average salary

£34,897 *

Special and Additional Needs Education Teaching Professional

Average salary

£30,101 *

*Labour market data is sourced from Lightcast (<https://lightcast.io/uk>) 2025, LMI for All (<https://www.lmiforall.org.uk/>) Data referenced relates to the Leeds City Region and is correct as of June 2025.



Engineering & Manufacturing

Electrical, manufacturing, mechanical - whichever branch of engineering you are interested in, we have courses to help you prepare for further study or employment. Based at our Printworks Campus, you will learn from engineering experts in our industry-standard facilities. Fully-equipped workshops house all you need to engineer success. Whether developing high level skills in machining, advanced manufacturing, process control, maintenance or fabrication and welding, you will gain practical experience in environments that prepare you for the world of employment.



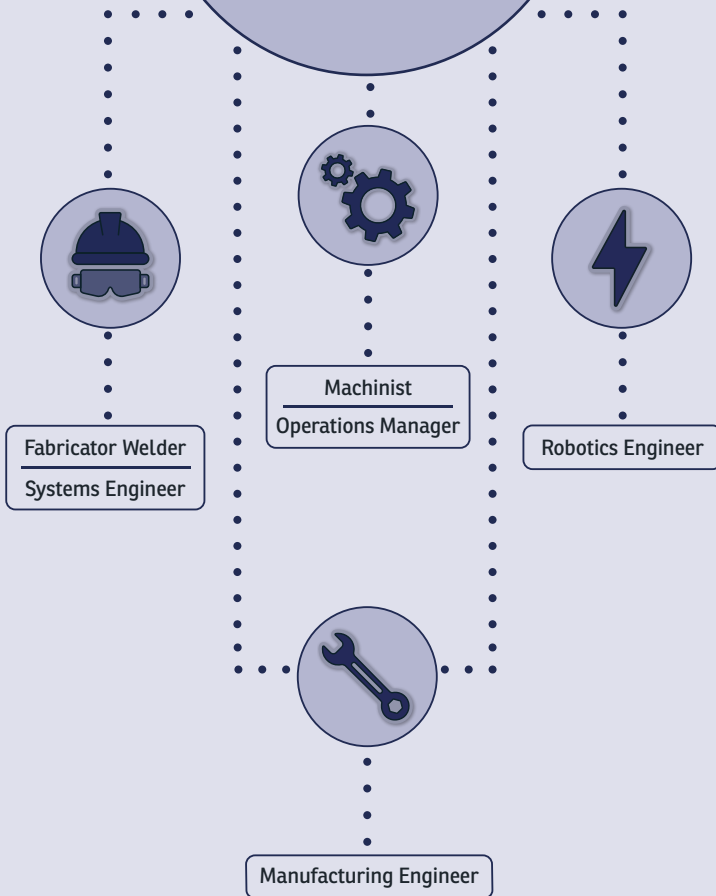
Location: Printworks Campus



Apply now!



Engineering & Manufacturing Careers



Courses

Level 2	<ul style="list-style-type: none"> ◆ Engineering - Machining ◆ Engineering - Fabrication & Welding ◆ Engineering - Maintenance
Level 3	<ul style="list-style-type: none"> ◆ Engineering Academic Route, Foundation/Extended Diploma
T Level	<ul style="list-style-type: none"> ◆ Engineering & Manufacturing: Engineering, Manufacturing, Processing & Control ◆ Engineering & Manufacturing: Maintenance, Installation and Repair for Engineering & Manufacturing ◆ Engineering & Manufacturing: Design & Development for Engineering & Manufacturing

For full course details, including entry requirements, scan the QR code or visit our website



T-LEVELS

For more information about T Levels, see page 90





The tutors here are really interactive and are always there whenever you need something. We don't call them Sir or Miss or use second names – we call them by their first names which helps create a relaxed and friendly communication between tutors and students.



Discover more



Production Managers and Directors in Manufacturing

Average salary

£45,600^{*}

Engineering Technicians

Average salary

£41,740^{*}

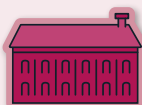
*Labour market data is sourced from Lightcast (<https://lightcast.io/uk>) 2025, LMI for All (<https://www.lmiforall.org.uk/>) Data referenced relates to the Leeds City Region and is correct as of June 2025.



Enterprise & Employability

Offered at Somerville House, our Enterprise & Employability courses encompass a variety of engaging topics such as personal development, financial management, career preparation, sustainability, and wellbeing, among many others. Each course integrates an employability component, ensuring that as you enhance your skills and expand your knowledge, you are also equipped for the professional world. We emphasise gaining practical experience in real-world settings through a diverse array of projects, community activities, and events.

Location: Somerville House



Follow us on social: @lcc_eventsenterpriseemploy



Apply now!



Courses

Level 1	<ul style="list-style-type: none">◆ Creative Craft◆ Personal & Social Development
Level 2	<ul style="list-style-type: none">◆ Creative Craft◆ Enterprise & Employability



“

Those projects where you just get something new, something you haven't even done before, it helps to expand your mind into something completely different and work in something that's not the same thing as you've done before.

”

For full course details, including entry requirements, scan the QR code or visit our website





Hair, Beauty & Media Makeup

Style your way into this creative industry with our hair, beauty and media makeup courses. Ranging from hairdressing to hair removal, barbering to beauty, skin rejuvenation to special effects makeup - our courses are on-trend and taught by passionate experts. Based at our Printworks Campus, you will learn in our stunning Ink Hair Spa, Inkwell Beauty Spa and The Studio. These industry-standard facilities give the experience of working in a real salon, spa or studio - perfectly preparing you for a role within this creative, rewarding field.



Location: Printworks Campus



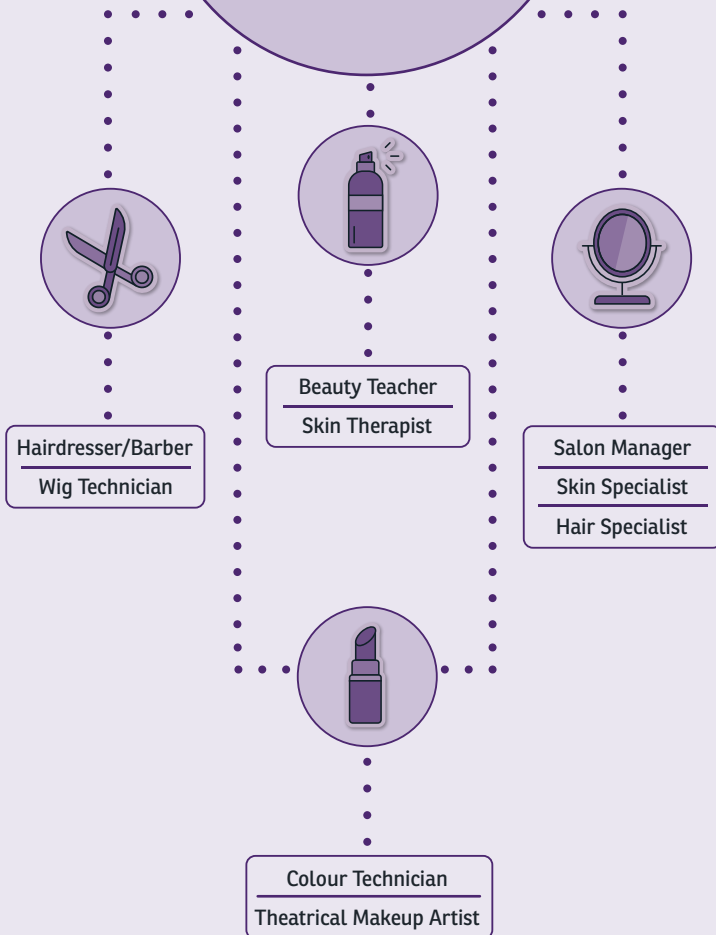
Follow us on social: @LCCHairBeautyMediaMakeup



Apply now!



Hair, Beauty & Media Makeup Careers



Courses

Level 1	<ul style="list-style-type: none"> ◆ Hair & Beauty
Level 2	<ul style="list-style-type: none"> ◆ Barbering ◆ Beauty Therapy ◆ Hair & Media Makeup ◆ Ladies' Hairdressing ◆ Women's Hairdressing
Level 3	<ul style="list-style-type: none"> ◆ Barbering ◆ Beauty Therapy Treatments ◆ Hairdressing ◆ Theatrical, Special Effects & Hair & Media Makeup

For full course details, including entry requirements, scan the QR code or visit our website



“

The thing with this course is it gives you a lot of creative freedom, like we all get given a brief but it's kind of 'what do you want to do with the brief?', and having all the products to back that up really helps us achieve that.

”

Discover more



**Hairdressing and
Beauty Salon Managers
and Proprietors**

Average salary

£27,781*



*Labour market data is sourced from Lightcast (<https://lightcast.io/uk>) 2025, LMI for All (<https://www.lmiforall.org.uk/>) Data referenced relates to the Leeds City Region and is correct as of June 2025.



Health Science & Social Care

Covering health and social care, adult social care, healthcare support and wellbeing, our courses can help you start your dream role. Our staff bring with them years of experience in a range of health and social care related occupations. Covering midwifery, social work, nursing, therapy and clinical support, to name a few, our tutors teach with an authentic, working knowledge of the subject. The majority of courses are taught at our Quarry Hill Campus.



Location: Quarry Hill Campus

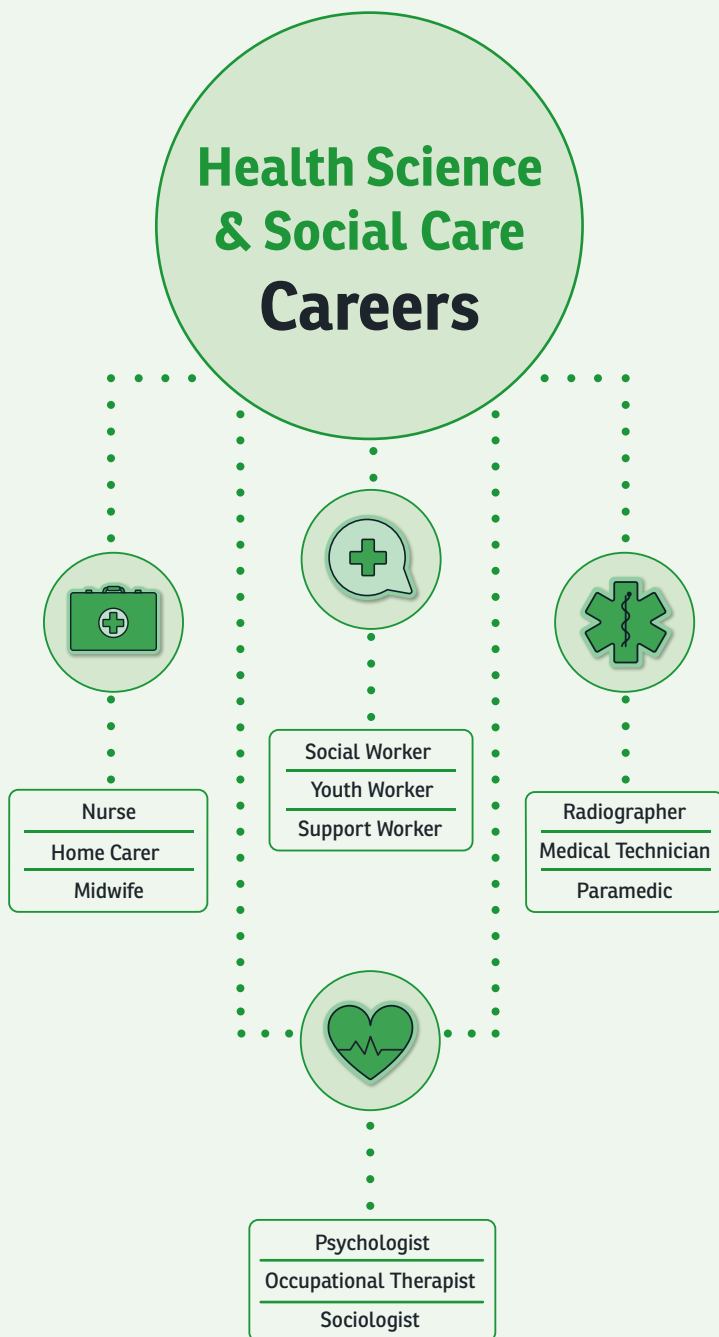


Follow us on social: @LCCHealthScienceSocialCare



Apply now!





Courses

Level 1	◆ Wellbeing
Level 2	◆ Health & Social Care ◆ Preparing to Work in Adult Social Care
Level 3	◆ Social Care ◆ Preparing to Work in Adult Social Care
T Level	◆ Health



For full course details, including entry requirements, scan the QR code or visit our website



T-LEVELS

For more information about T Levels, see page 90

“

I am now a qualified adult nurse and am still in touch with some of my tutors. I also frequently visit college to speak to students about my experience and offer advice.

”



**Residential, Day
and Domiciliary
Care Managers and
Proprietors**

Average salary

£42,832^{*}



*Labour market data is sourced from Lightcast (<https://lightcast.io/uk>) 2025, LMI for All (<https://www.lmiforall.org.uk/>) Data referenced relates to the Leeds City Region and is correct as of June 2025.



Public Services

If you're thinking of joining a branch of the emergency services or the military, our Public Services courses can help you prepare for a career serving and protecting others. With our strong links to local public services, we can give you a real insight into the particular area you are interested in. Taught at our Quarry Hill Campus, courses make use of immersive learning experiences such as gathering evidence from a mock crime scene, taking part in outdoor activities, completing entry-requirement fitness tests and riot training.



Location: Quarry Hill Campus



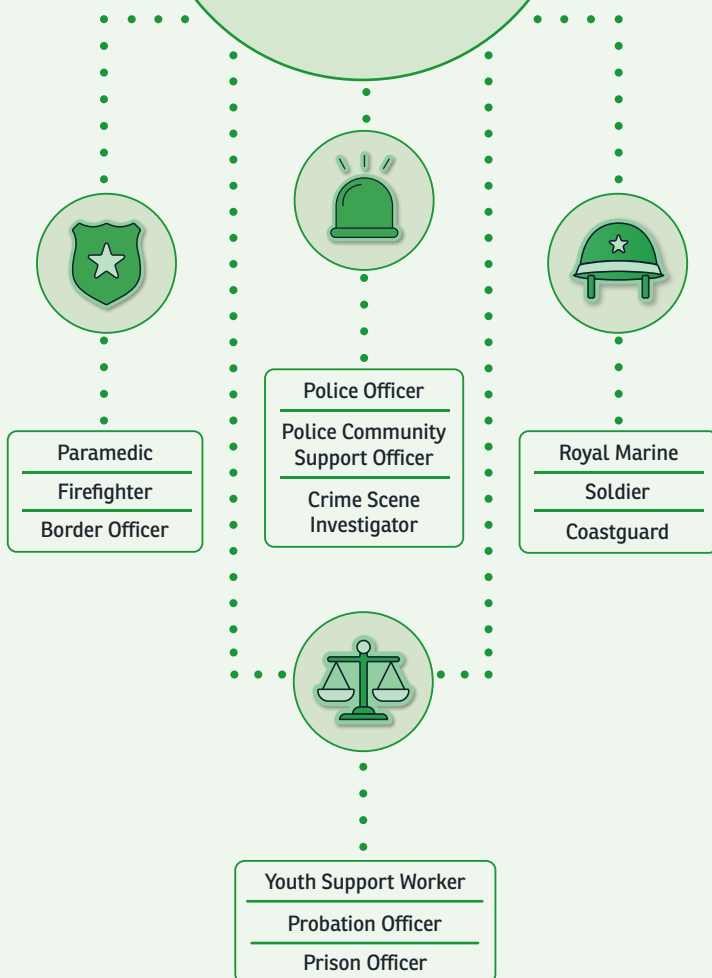
Follow us on social: @LCC_PublicServices



Apply now!



Public Services Careers



Courses

Level 1	<ul style="list-style-type: none">◆ Entry to the Uniformed Services◆ Introduction to Community & Youth Services
Level 2	<ul style="list-style-type: none">◆ Entry to the Uniformed Services◆ CATCH Pathways: Step Up to Apprenticeships
Level 3	<ul style="list-style-type: none">◆ Entry to the Uniformed Services



For full course details, including entry requirements, scan the QR code or visit our website



“

I want to become a police officer - that's my biggest dream ever since I was little. I've never changed my mind, never wanted to go a different path - it's always been that. That's why I joined here, because I can do the Apprenticeship after this Level 3 course. I've always wanted to do it and I'm chasing my dreams.

”



**Senior Officers in Fire,
Ambulance, Prison and
Related Services**

Average salary

£56,434 *

**Public Services
Associate
Professionals**

Average salary

£37,381 *

*Labour market data is sourced from Lightcast (<https://lightcast.io/uk>) 2025, LMI for All (<https://www.lmiforall.org.uk/>) Data referenced relates to the Leeds City Region and is correct as of June 2025.



Science

Our courses prepare future scientists, technicians and researchers for the industry by helping them develop their theoretical and practical knowledge in various branches of science. Students will study scientific theories and techniques, conduct experiments and gain practical skills in cutting-edge laboratories. Taught in our state-of-the-art laboratories at Park Lane, each course will equip you with the skills and knowledge required to enter numerous jobs within the scientific sector.



Location: Park Lane Campus

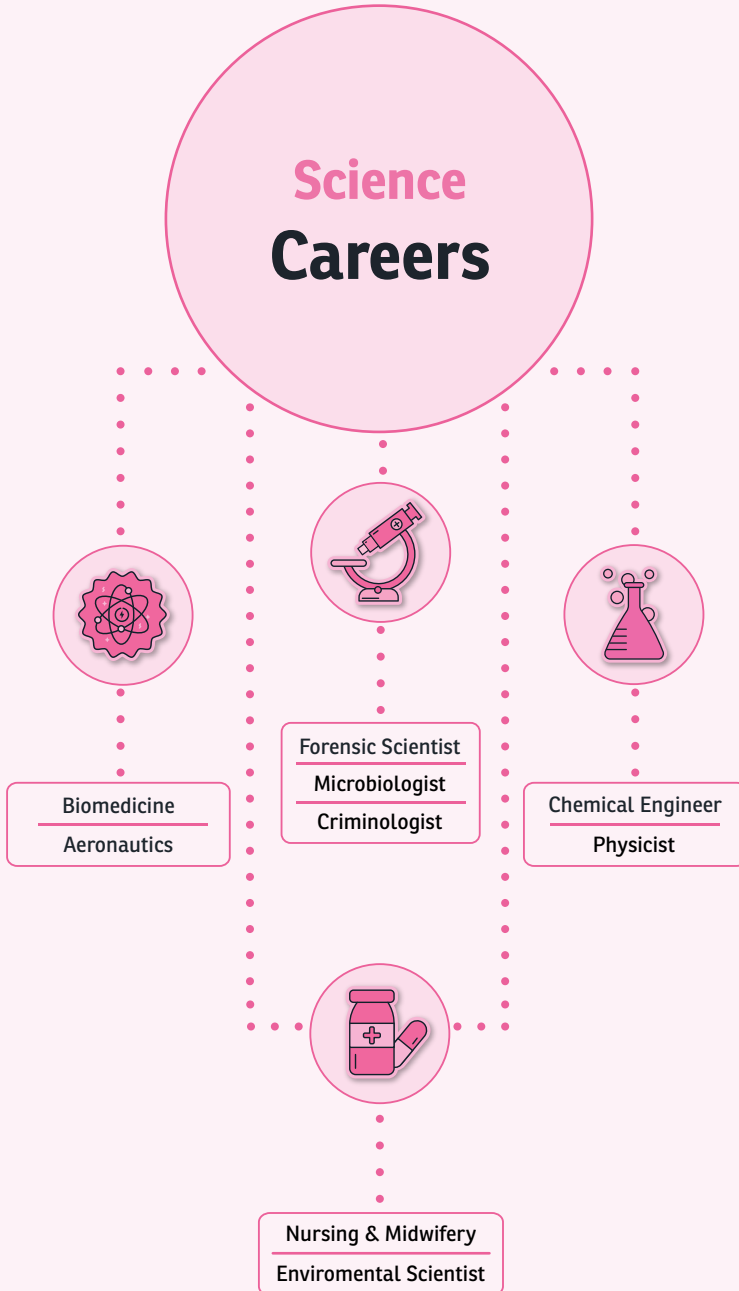


Follow us on social: @LCCAppliedScience



Apply now!





Courses

Level 2	◆ Principles in Applied Science
Level 3	◆ Applied Science ◆ Applied Science & Human Biology
T Level	◆ Laboratory Science



For full course details, including entry requirements, scan the QR code or visit our website



T-LEVELS

For more information about T Levels, see page 90

“

I'm working really well with my tutors: they're really supportive and we just have a laugh. It's like a really nice atmosphere. I think the facilities are really fantastic.

”



Biochemists and Biomedical Scientists

Average salary

£36,928*

Physical Scientists

Average salary

£44,327*

*Labour market data is sourced from Lightcast (<https://lightcast.io/uk>) 2025, LMI for All (<https://www.lmiforall.org.uk/>) Data referenced relates to the Leeds City Region and is correct as of June 2025.



Sport

We have the qualifications to kick start your career in sport and fitness. Whether you're looking to compete or play professionally, coach the sport stars of tomorrow, help people smash their personal best in the gym or learn more about the science of sport, we have a course for you. Taught in our Park Lane Campus, you will enjoy lessons in light, spacious classrooms and use our fully-equipped ECO-POWR gym: it converts students' energy into electricity which is used to power devices within the college.

Location: Park Lane Campus

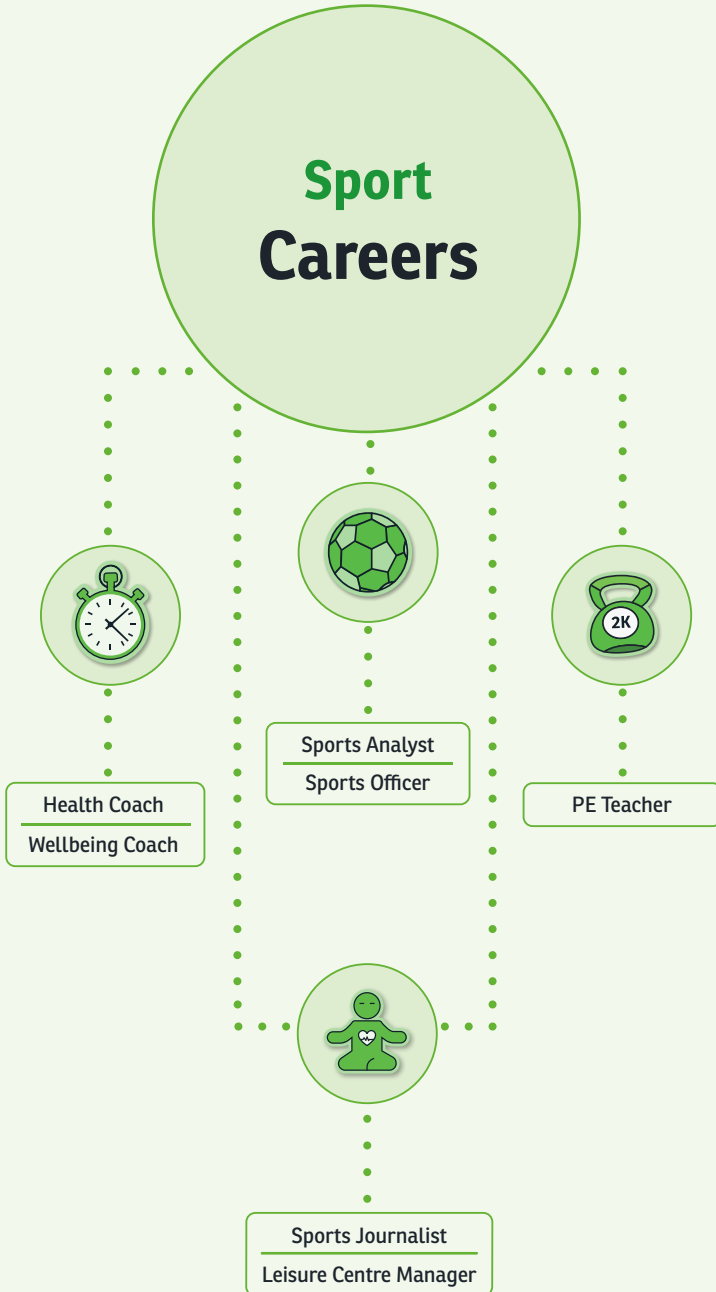


Follow us on social: @LCCSport



Apply now!





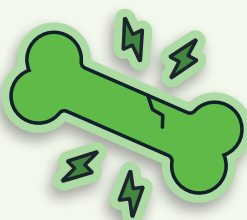
Courses

Level 1	<ul style="list-style-type: none"> ◆ Sport
Level 2	<ul style="list-style-type: none"> ◆ Activity Leadership ◆ Fitness Instructing (Gym) ◆ Sports Industry Skills (Leading Children's Sports Activities)
Level 3	<ul style="list-style-type: none"> ◆ Coaching & Performance ◆ Fitness Instructing & Personal Training ◆ Sport (Advanced) ◆ Sports Coaching ◆ Sport & Exercise Science ◆ Sport, Fitness & Personal Training

For full course details, including entry requirements, scan the QR code or visit our website



The modules that I was studying coincided with what I was learning while I was learning to be an athlete. My tutor started encouraging me to go to university and I didn't think I was going to go because nobody in my family had been. I graduated last year and now I have a graduate job working in a school teaching PE to special educational needs children.



**Leisure and Sports
Managers and
Proprietors**

Average salary

£29,509*

Physiotherapists

Average salary

£43,414*

*Labour market data is sourced from Lightcast (<https://lightcast.io/uk>) 2025, LMI for All (<https://www.lmiforall.org.uk/>) Data referenced relates to the Leeds City Region and is correct as of June 2025.



Sustainable Technologies & Motor Vehicle

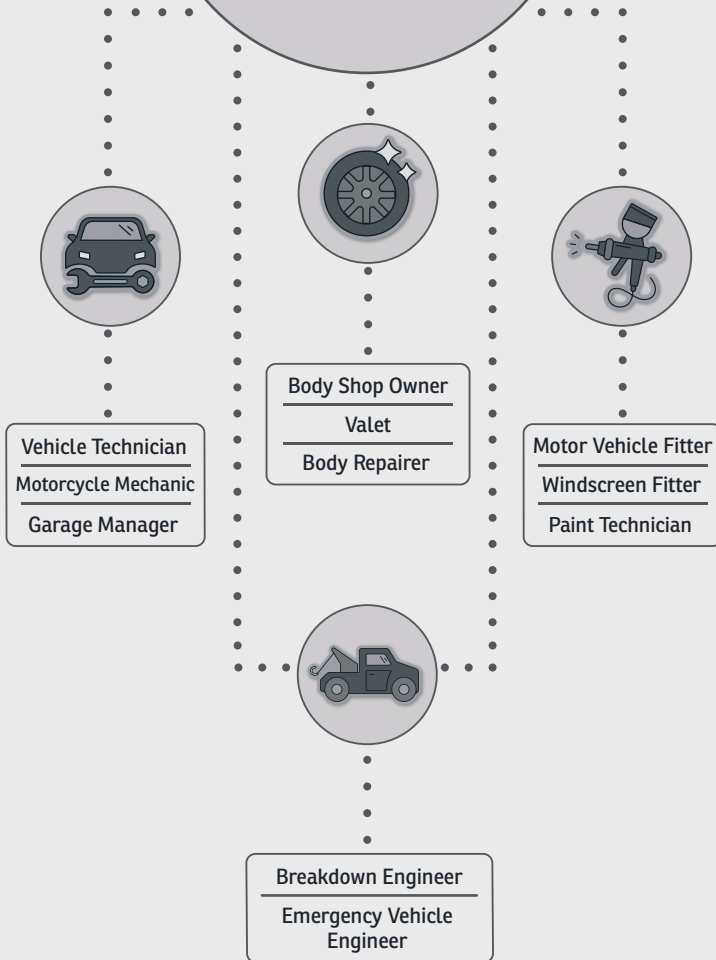
If you're interested in vehicles, mechanics or working in a garage, our Sustainable Technologies & Motor Vehicle department is where you belong. From restoring cars to carrying out mechanical repairs, our courses will equip you to succeed in a variety of vehicular careers. Learning in fully-equipped garages on real vehicles, our practical courses give you plenty of hands-on experience. From body and panel paint repair to diagnosing, and fixing, faults on light vehicles, our informative and interesting courses prepare you for employment.



Location: Printworks Campus



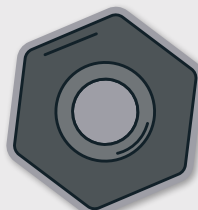
Sustainable Technologies & Motor Vehicle Careers



Courses

Entry Level	<ul style="list-style-type: none"> ◆ General Vehicle Maintenance
Level 1	<ul style="list-style-type: none"> ◆ Vehicle Accident Repair ◆ Vehicle Maintenance
Level 2	<ul style="list-style-type: none"> ◆ Accident Repair Paint Principles ◆ Electrical Installation Building & Structures ◆ Light Vehicle Maintenance & Repair Principles ◆ Light Vehicle Service & Maintenance Technicians
Level 3	<ul style="list-style-type: none"> ◆ Electrical Installation ◆ Light Vehicle Maintenance & Repairs Principles ◆ Vehicle Accident Repair Paint Principles

For full course details, including entry requirements, scan the QR code or visit our website



“

Being in the spray booth is quite zen to be honest. You just get in with the panel that you're going to be spraying, your spray gun all hooked up, mask down, and you're just away with your own thoughts, spraying away until you get the job done.

”

**Metal Working
Production and
Maintenance Fitters**

Average salary

£38,218*

**Vehicle Technicians,
Mechanics and
Electricians**

Average salary

£35,053*

Discover more



**Vehicle Body Builders
and Repairers**

Average salary

£31,509*

**Vehicle Paint
Technicians**

Average salary

£35,325*

*Labour market data is sourced from Lightcast (<https://lightcast.io/uk>) 2025, LMI for All (<https://www.lmiforall.org.uk/>) Data referenced relates to the Leeds City Region and is correct as of June 2025.



Travel & Tourism

If you have a head for heights, a taste for tourism and a desire to deliver excellent customer service to travellers, roles in cabin crew, aviation or travel could be for you. Learning in our first-class facilities, you will receive all the training needed to prepare you for a career that could see you working all over the world. Based at our Printworks Campus, you can perfect your customer service skills in our air cabin, become a destination expert in our classrooms and learn all you need for a high-flying career from our expert tutors.

Location: Printworks Campus



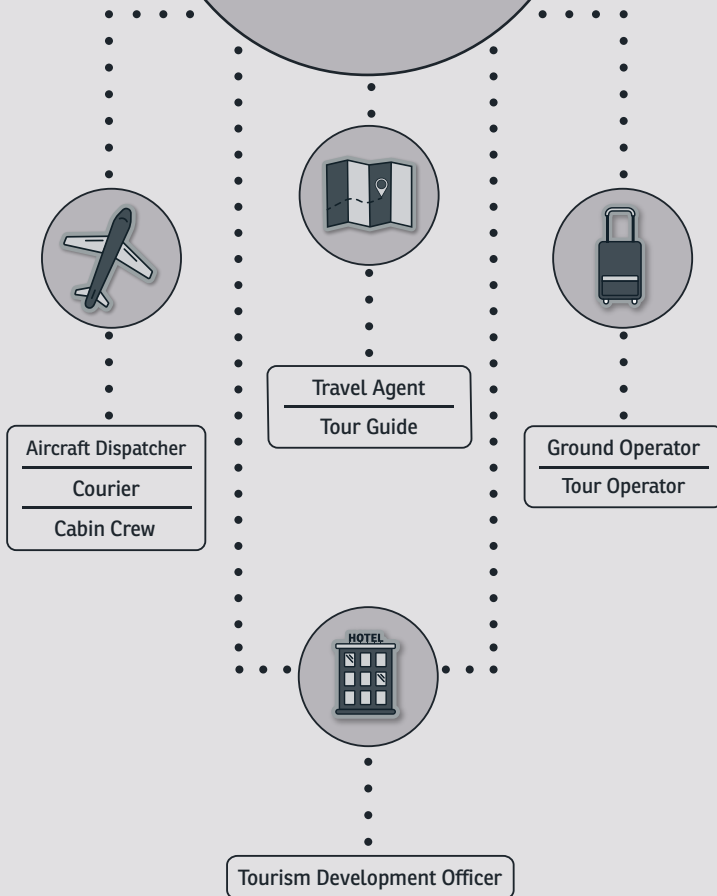
Follow us on social: @LCC_TravelFoodDrink



Apply now!



Travel & Tourism Careers



Courses

Level 1	<ul style="list-style-type: none">◆ Exploring the Aviation Industry◆ Travel & Tourism
Level 2	<ul style="list-style-type: none">◆ Cabin Crew◆ Travel & Tourism
Level 3	<ul style="list-style-type: none">◆ Aviation Pathway◆ Travel & Tourism

For full course details, including entry requirements, scan the QR code or visit our website



“

I enjoy studying Travel and Tourism because I've met so many different people and I've made so many new friends - and also the teachers as well, they're really really helpful.

”

Discover more



Air Travel Assistants

Average salary

£23,376*

**Travel Agency
Managers and
Proprietors**

Average salary

£31,988*

*Labour market data is sourced from Lightcast (<https://lightcast.io/uk>) 2025, LMI for All (<https://www.lmiforall.org.uk/>) Data referenced relates to the Leeds City Region and is correct as of June 2025.

Apprenticeships at Leeds City College



What is an apprenticeship?

An apprenticeship combines the world of work with the world of learning. An apprentice gains **hands-on practical training** as well as **off-the-job learning**. Open to anyone aged 16 and over, you learn the skills and develop the knowledge you need to work in your chosen field, while employed in a salaried job.

Why choose an apprenticeship?

- ◆ You will start work in a specific role, and gain the skills and knowledge needed to succeed
- ◆ You will be employed from the first day - receiving a contract, salary, holiday allowance and all other employee benefits
- ◆ You will gain valuable practical experience working in your chosen industry, giving you the skills and knowledge that employers seek

Why choose an apprenticeship with Leeds City College?

- ◆ We are one of the largest further education institutions in the country with more than 20,000 students, and we are one of the biggest providers of apprenticeships regionally
- ◆ We have strong industry links with local, regional and national employers, ensuring your apprenticeship covers relevant and current content - giving you the best training and increased opportunities for career progression

What sort of apprenticeships can I do with Leeds City College?

We work with fantastic employers, offering apprenticeships in a wide range of industries and roles. Our vacancies are advertised on a regular basis - check our website for current opportunities.

Vacancies



Typically we offer apprenticeships in the following areas:

Animal Care

Barbering, Hairdressing & Beauty

Business, Customer Service,
Law & Leadership

Digital & IT

Education

Engineering & Manufacturing

Fabrication & Welding

Food, Drink & Hospitality

Health & Social Care

Marketing & Events

Motor Vehicle

Science



The chance to gain valuable work experience alongside a qualification and earn a wage at the same time is something I never thought possible. There is also the extra incentive that being an apprentice there are no course fees to pay unlike at university.

How to apply:

Whether you have an idea of the industry in which you want to work, or whether you have no idea at all and want to know more about the apprenticeships out there, we can help. If you are currently employed and want to start an apprenticeship, we can help with that too.

1.

Get your CV ready

Applying for an apprenticeship is like applying for a job – a good CV detailing your interests, any work experience, or qualifications you may have is a must. You can also include your values, what is important to you and what you are looking for in an apprenticeship.

2.

Apply

Take a look at our vacancies page leedscitycollege.ac.uk/apprenticeships or go to gov.uk/apply-apprenticeship. Keep checking these vacancies as they update frequently. Alternatively secure your own apprenticeship with a local employer and contact us with the employer details and we will do the rest: apprenticeships@leedscitycollege.ac.uk

3.

Interview process

Employers will screen your application and decide whether they would like to invite you for an interview – this invitation may come directly from the employer or the Apprenticeship team at Leeds City College.

4.

Successful applicant

If you are successful in securing the job an onboarding process will take place. This will involve your employment contract and enrolment with us at Leeds City College for the training element of your role. Support from us will be provided at every stage.

5.

Don't give up!

An apprenticeship is about finding the right job for you and the right candidate for the employer. If you are unsuccessful in your first application, do not give up, keep trying and applying!



If you need any advice or support, please contact the Apprenticeship team.

I'm already working, can I do an apprenticeship?

Absolutely – an apprenticeship is an ideal form of professional development, allowing you to retain an income as you study, progress in your current role, and develop your understanding of your industry.

Step 1: Speak with your employer: if they are happy to support you through an apprenticeship progress to step 2:

Step 2: Complete our enquiry form, call us: **0113 284 6464** or email: **apprenticeships@leedscitycollege.ac.uk**

Step 3: One of our Business Development Advisors will contact your employer to explain how we can assist them in the process of setting up the apprenticeship.

What if I don't know what to do?

Why not attend one of our open events, speak to our team and find out what options are available.

Contact us for more information:



Call us: 0113 284 6464



Email: apprenticeships@leedscitycollege.ac.uk

Apprenticeship Open Events

Meet potential employers and explore apprenticeship opportunities at our Open Events. For more details, including dates, and **how to book**, please visit the **Events page** of our website.

See our upcoming Open Events

Click here



T Levels



Are you looking to pursue further education after GCSEs but seeking a different approach? T Levels offer a fresh alternative to A Levels, combining classroom learning with practical, industry-specific skills that prepare you for the workplace. This two year programme is designed for 16 to 19 year olds and blends 80% classroom study with 20% real-world experience.



Taught by tutors with real industry experience, you'll gain in-depth knowledge of your chosen sector while completing at least 315 hours (around 45 days) on placement with a local employer. This valuable experience helps you develop essential skills and could even lead to a paid job offer.

After completing your T Level, you'll be ready to step into skilled employment, and you'll also have the option to progress to a higher apprenticeship or a degree, with many universities accepting T Levels as part of their entry requirements.

At Leeds City College we offer T Levels from the following subject areas:

Animal Care	Education & Early Years
Business	Engineering & Manufacturing
Creative Arts	Health & Social Care
Computing & Digital	Science





DEGREES DONE DIFFERENTLY

DEGREES &
HIGHER EDUCATION
COURSES

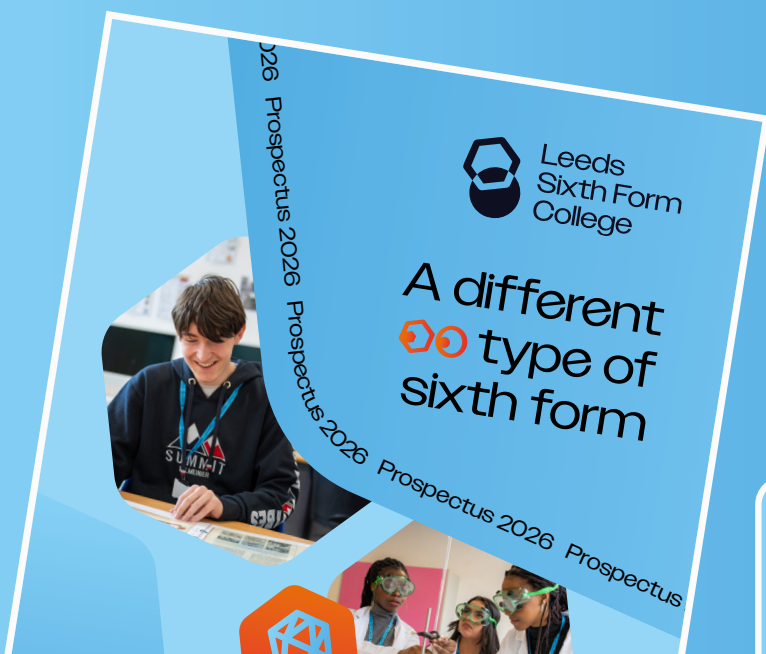


Visit ucleeds.ac.uk for all
our available courses



A different type of sixth form

Leeds Sixth Form College is a vibrant, innovative centre of education in the heart of the city, offering first-class teaching that prepares you for the future. Choose from A Levels or a hybrid programme that combines academic and vocational learning.



Scan here



Discover the possibilities and download the prospectus

Purpose built for you and your future

Pudsey Sixth Form College is a brand-new, innovative college offering expert teaching that helps you go beyond your goals. With a choice of A Levels, T Levels or a hybrid programme, we deliver bold, ambitious curriculums that open the doors to limitless destinations.



Scan here



Launch your future - download the prospectus today

STEM and STEAM



STEM stands for science, technology, engineering and maths – academic disciplines that play a vital role in all aspects of professional and everyday life. In a world of rapid technological advances, new opportunities are constantly arising as jobs – and the skills required to perform them – evolve.

With STEM skills required across almost all industries, demand for people working in STEM is high and is set to increase even more over the coming years. Having STEM skills not only makes you very employable, it also helps you identify problems, think creatively and analyse information more effectively.

Here at Leeds City College, we've taken STEM further – incorporating Arts into STEM, to create STEAM. We recognise the importance of the arts, and the valuable skills that studying a creative subject develops.



We call this set of skills the STEM/STEAM7:

- 1.** Creative thinking
- 2.** Problem-solving
- 3.** Communication
- 4.** Collaborative working
- 5.** Intellectual curiosity
- 6.** Flexibility
- 7.** Data-driven decision-making

Studying a STEAM course will allow you to progress on to a range of jobs in:

- ◆ Applied and Life Sciences
- ◆ Architecture
- ◆ Artificial Intelligence
- ◆ Audio Technology
- ◆ Computer Programming
- ◆ Conservation
- ◆ Creative Arts
- ◆ Data Security
- ◆ Engineering
- ◆ Games Development
- ◆ Graphic Design
- ◆ Health
- ◆ Laboratories and Research
- ◆ Medical Science
- ◆ Motor Vehicle
- ◆ Fuel Industries
- ◆ Psychology
- ◆ Renewable Energy and Environment
- ◆ Software Development

And many more!



At Leeds City College, we offer a range of science, technology (digital and IT), engineering, arts and maths courses to help you enter the world of STEAM. In 2023, we were accredited as a STEM assured provider - an industry-recognised endorsement which reflects the quality of our provision, the resources and environments we offer, and how well we prepare you for work, apprenticeships or Higher Education.

STEM and STEAM and the world of work

You can also strengthen your English and communication skills on many of our courses – skills that are vital in every industry. On completion, you could go straight into employment or on to university to further strengthen your skills.



STEM + Arts = STEAM

Creativity is integral to problem solving and innovation



Creative thinking



Communication



Problem solving



Intellectual curiosity



Data-driven decisions



Flexibility



Collaboration

English for Speakers of Other Languages (ESOL)

Welcome | Bienvenue | Bine Ati Venit Witamy | Bem Vinda | Bi xêr hatî

Students aged 16 to 19

Is English your second language?
Would you like to improve your ability
to write, read and speak English?

Discover English for Speakers of Other Languages (ESOL) – also known as English as an Additional Language (EAL) – at Leeds City College.

- ◆ Achieve English and maths qualifications
- ◆ Learn at your personal level of English
- ◆ 92% of students move on to Leeds City College's further education courses
- ◆ Study with over 300 other 16–19 students from different countries
- ◆ Train for work and improve your English in college

**For 16–19 courses you can also apply
at our North Street Campus,
223 North Street, Leeds LS7 2AA.**

Adult students

Our dedicated ESOL teachers are also
here to help adult students improve
their written and spoken English.

Strengthen your skills with our courses.
We're an award-winning department with one
of the highest achievement rates in the UK.

Our teachers are committed to giving
every student the very best learning
experience. In 2017, we were named
FE Team of the Year by the prestigious
Pearson Teaching Awards, and in 2025 we
were graded 'Outstanding' by Ofsted.

We welcome students at all levels, from
beginner to GCSE Maths and English. Many
of our graduates have moved into
employment or further study.

Scan the QR code
for more information



To apply:



Visit: leedscitycollege.ac.uk/schools/esol



Call: 0113 386 1997



Email: contact@leedscitycollege.ac.uk

The Vine



Specialist Profound and Multiple Learning Disabilities (PMLD) Provision

The Vine offers personalised learning programmes for individuals with severe and complex learning difficulties. Specialist staff provide support with behaviour, personal and medical care, mental health, physiotherapy, and hydrotherapy.

Learning is tailored to support life outcomes, guided by each student's education, health and care plan (EHCP) and chosen learning pathway. Students also benefit from English and maths sessions to build communication and numeracy skills.

Our bite-size curriculum offer supports with sensory stimulation and is split into the following strands:

Social Emotional Development

For young people with specific learning disability (SLD), profound and multiple learning disabilities (PMLD) and complex learning difficulties and disabilities (CLDD) who experience a range of social emotional difficulties. This curriculum covers personal wellbeing, communicating needs and wants, making choices and expressing thoughts and feelings.

Communication (Speech & Language)

Our curriculum encourages effective communication, including responding to social events and activities, interacting with others and intensive interaction.

Sensory and Cognition

Encourages sensory exploration to develop motor skills, tactile awareness, sensory integration, and visual/auditory responses.

Physical Interaction

Designed for learners with physical impairments or those developing movement skills. Focuses on body awareness, mobility, grasping, standing, and walking.



For more information:



Email: sendteam@leedscitycollege.ac.uk

The Vine, Torre Drive, Burmantofts LS9 7DH



Future Pathways

Our Future Pathways department is dedicated to enhancing the employment opportunities of students with EHC Plans and High Needs. We are committed to increasing their prospects enabling them to follow their dreams - whether this be progressing onto academic, vocational or technical study programmes.

Class sizes are small, staff to student ratios are high and innovative learning enables students to gain English and maths qualifications alongside their study programme.

Future Pathways offers:

- ◆ A tiered, cohesive curriculum that offers distinct pathways into further learning, and employment for EHC Plan students
- ◆ Progression opportunities and destinations through an enhanced skills, enrichment and Information, Advice and Guidance (IAG) offer
- ◆ An enhanced student experience, including integration with peer groups, for students currently studying at Park Lane
- ◆ Gateway qualifications - supporting progression to further study, or into employment
- ◆ High staff-to-student ratios to support a destination-led outcome for each individual
- ◆ Opportunities to participate in enrichment and skills development
- ◆ Opportunities to undertake work experience - bringing classroom learning to life



This department can be found at Park Lane Campus



More information



Foundation Studies

The Foundation Studies department offers a tailored curriculum that promotes independence, wellbeing, community involvement, and career prospects. Rated 'Good' by Ofsted, every course aligns with the Preparation for Adulthood (PFA) agenda and adapts to individual needs.

Ideal for individuals with disabilities, learning difficulties, and/or challenges around behaviour and emotional regulation, our courses build skills for independent living and future employment.

The curriculum is split into key strands, each with a bite-size approach:

Independent Living and Community Inclusion

Develop your basic cooking skills, learn household tasks, take part in enrichment events, manage a personal budget, and develop your communication skills for personal and social development.

Work/Employment

Prepare for voluntary or paid work with a course that blends independence, teamwork, and community skills.

Vocational Stepping Stones

Explore vocational areas and gain the skills needed to progress into other college courses.

Exploring and Securing Future Opportunities

Discover life after college through community visits, work experience, and support pursuing future opportunities.

Students benefit from small class sizes, specialist facilities with assistive technology, and support with personal and medical care from our expert Care team. Each learner is also assigned a personal tutor for ongoing guidance and support to progress through their learning journey.



This department can be found at Joseph Priestley Centre, Beeston



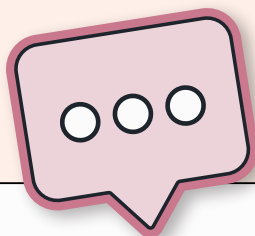
Pre-Internship Programme



Our Pre-Internship programme runs for one academic year and is an opportunity for students to develop employability skills in preparation for work and to support with next steps onto a Supported internship. Students will learn about the skills and qualities needed for working life and will explore job interests. The programme is a mix of classroom activity, community visits and work placements. Students will develop employability skills alongside maths and English.

Entry requirements:

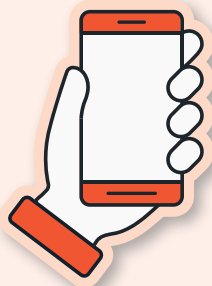
- ◆ Current LCC student
- ◆ Have an EHCP
- ◆ Must be an independent traveller



For more information:



Visit: leedscitycollege.ac.uk/courses/pre-internships



Supported Internships

Shape your future with a Supported Internship through Leeds City College.

Our internships are personalised work-focused courses that help you gain the skills and experience you need to secure a job.

Designed for students with learning difficulties and disabilities, or who need support with managing emotions and behaviour, supported internships combine classroom learning with work experience. You will spend one day a week at Leeds City College, and two days a week in a work placement. Our goal is to help you get paid work in the future.

You will:

- ◆ Receive personalised support based on your needs
- ◆ Get help from expert job coaches
- ◆ Develop transferable skills for your future career
- ◆ Improve your confidence and become more independent

Entry requirements:

- ◆ Current LCC student
- ◆ Have an EHCP
- ◆ Must be an independent traveller

More information



With our supported internships, students have had the opportunity to explore various career paths in fields such as catering, maintenance, administration, and more, with a range of employers across Leeds.

Learners with high needs successfully develop the knowledge and skills that they need for adulthood and to lead more independent lives. - Ofsted report, 2025



For more information:



Email: supportedinternships@leedscitycollege.ac.uk

14+ Academies



Since opening in 2013, the 14+ Academies have maintained a bold and purposeful vision: to provide education for young people in Years 10 and 11 who would like an alternative to mainstream schools. Supporting learners through their GCSEs whilst offering a vocational pathway alongside their core curriculum, the 14+ Academies place a key focus on developing real-world and employability skills, whilst delivering in-depth pastoral support.

The 14+ Academies are committed to providing an engaging and enjoyable experience where individual differences are celebrated. Learners have the opportunity to complete work experience and engage in vocational study in a field they aim to work in. Our skilled and experienced staff will provide support to help you progress and reach your goals.

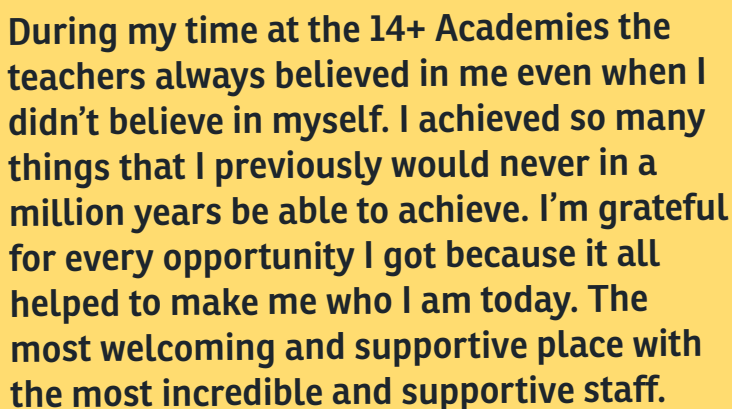
- ◆ 100% of our learners successfully progress onto post-16 education or training across a range of provisions, whether that's A Levels, apprenticeships, or vocational options
- ◆ 100% of learners report that they feel safe in the 14+ Academies environment
- ◆ With class sizes of less than 20, learners are provided with opportunities to develop, maximise their potential, raise aspirations and embrace their individuality

See for yourself

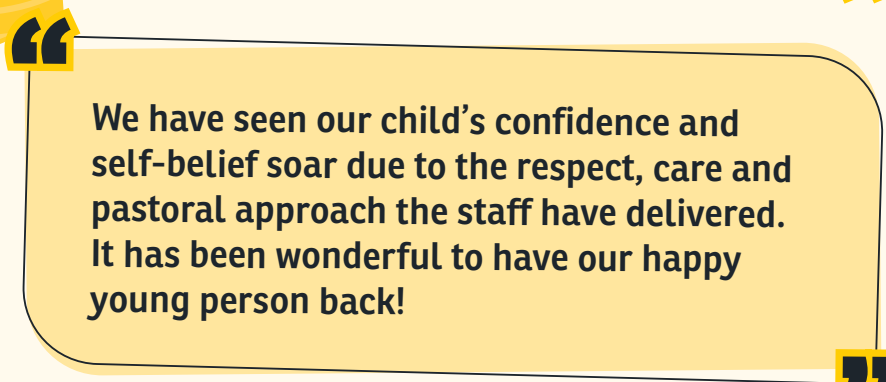


Learners aged 14 to 16 are focused and motivated to learn. They are inspired by the variety of activities that staff offer.

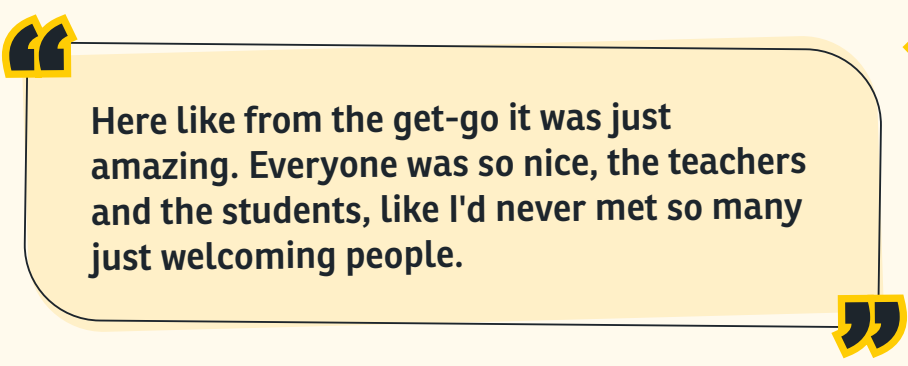
- Ofsted report, 2025



During my time at the 14+ Academies the teachers always believed in me even when I didn't believe in myself. I achieved so many things that I previously would never in a million years be able to achieve. I'm grateful for every opportunity I got because it all helped to make me who I am today. The most welcoming and supportive place with the most incredible and supportive staff.



We have seen our child's confidence and self-belief soar due to the respect, care and pastoral approach the staff have delivered. It has been wonderful to have our happy young person back!



Here like from the get-go it was just amazing. Everyone was so nice, the teachers and the students, like I'd never met so many just welcoming people.

Student Life

From sports activities and virtual clubs to social action volunteering and work experience – the student life at Leeds City College is rich, rewarding and varied.

We want you to have a great experience at college and enjoy your time with us. The Student Life team offers support for students at every campus, as well as: Student Union; Careers, Work Experience and Progression; Safeguarding and Wellbeing Support; Student Finance and Welfare Advice; Enrichment; Tutorial Support; and Catering Services – allowing you to get the most out of college.

Connect with others, develop new interests and have your voice heard through our many clubs, societies and leadership opportunities. If you need help or support, our mental health and wellbeing, safeguarding and financial support teams can talk you through your options. Our Careers team also has lots of information and resources to help you choose and plan future career pathways.

Student Life enrichment

College isn't just about learning, which is why we offer a range of societies, groups and sports activities to develop your skills and help you meet new friends. Not only do our student campaigns, events and trips raise awareness around important issues, they'll also give you some amazing experiences which will help you make the most of student life.





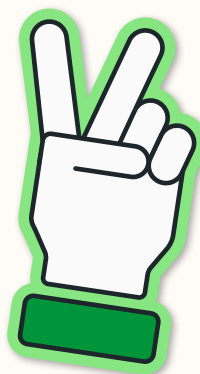
STUDENT LIFE

Careers, Work Experience and Progression team

Looking for advice on your next steps? Our team has you covered.

We can help you with:

- ◆ Choosing your next course
- ◆ Finding an apprenticeship
- ◆ Preparing for university
- ◆ Securing your dream job role
- ◆ Finding work experience opportunities
- ◆ Writing and developing CVs/cover letters
- ◆ Developing your employability skills
- ◆ Identifying progression pathways from your course



Safeguarding and Wellbeing



Safeguarding

We are committed to doing everything we can to make sure all of our students and staff are kept safe and protected from harm. This is what safeguarding is all about. It is important to us that all our students are treated with respect and dignity, and feel safe and listened to. All our staff are trained to be alert to any possible causes for concern. We also have a wider team of Stay Safe Officers and Designated Safeguarding Officers, who complete ongoing specialist safeguarding training.

Mental health and wellbeing support

It's always good to talk. Our counsellors and mental health officers can offer wellbeing support such as counselling, guided self-help and a safe space to talk; our mental health first aiders can direct you to support services; and you can follow our wellbeing tips during exam season. If you are worried about someone else, our Safeguarding team is also available for support and advice.

Academic support

You will receive academic support from your teachers and coaching tutors. You can also contact our iLearn team for skills training, 1:1 advice, workshops or engaging learning materials. Or visit our Independent Learning Zones to access a range of resources such as books, Google Chromebooks, CDs and DVDs. Additionally, you can take part in exam preparation sessions.

For more information:

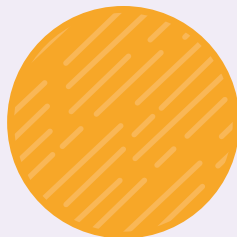


Visit: mindmate.org.uk

For more help and advice for Leeds locals



Visit: mindwell-leeds.org.uk



Tutorials

All students take part in tutorial sessions, where we cover a variety of personal, social, citizenship and health topics, in response to contemporary current affairs. These sessions support students to identify and develop skills which can support their chosen career pathway, as well as providing information on how to keep themselves safe. Our tutorial programmes give every student an equal opportunity to develop the skills and knowledge they need to thrive now and in the future.

Equality, Diversity and Inclusion (EDI)

Equality, Diversity and Inclusion (EDI) is woven into the culture here at Leeds City College. We foster a climate of respect and dignity, actively challenge prejudice and work within the spirit of the Equality Act of 2010. We work to remove barriers for all our students and employees by providing appropriate education, training and development. We value the diversity of our students and staff and encourage all at Leeds City College to live by the values of inclusion, diversity and equality.

Restorative Practice (RP)

Our staff are trained to follow a restorative approach. Restorative Practice (RP) is a process based around the power of communication, and sits at the heart of our college culture. It looks at building resilience and connections, developing relationships and understanding the power of communication.

Prevent

Part of our safeguarding duty is to protect vulnerable individuals from the risk of radicalism and extremism. To do this, we follow government guidance which is known as the Prevent duty. At Leeds City College, everyone has a responsibility to Prevent our students becoming radicalised. All staff have been trained to recognise the signs that someone is becoming radicalised. Students are delivered messages about Prevent, radicalisation and extremism during tutorials.



Wellbeing

The wellbeing of our students is a top priority for Leeds City College, and we aim to create an environment that puts your wellbeing at the heart of your learning experience, enables academic success and promotes long-term good mental health and wellbeing.

The Wellbeing Hubs are a safe and quiet space on campus for you to use when you need time out or need to speak to someone about things you may be struggling with. You can speak in confidence to any member of our team about things going on at home or in college that you're upset or concerned about. We can help get you the support you need within college and from external services.

We're happy for you to come and use the Hub whenever you need to. If you just need a quiet moment, a relaxing space to catch up with your assignments or time out to do a wellbeing activity, our team is here to support you.

An important part of our wellbeing team are our therapy dogs, Jeffrey, Molly and Henry, who help reduce anxiety and stress. Based at Quarry Hill (Jeffrey), Park Lane Campus (Molly) and the Joseph Priestley Centre and The Vine (Henry), our furry friends offer a helping paw when you need it.



“

Sometimes when I'm feeling down just by seeing Jeffrey I feel happy and motivated to do my best.

”



Scan here



For more information about Student Wellbeing, please scan the QR code or visit our website

ilearn

Our ilearn hubs offer an ideal space for independent learning, quiet reading, or one-on-one sessions with a tutor. With a vast collection of over 20,000 ebooks, as well as novels, graphic novels, and educational resources, the hubs are a perfect source of inspiration. Our study support officers are always available to assist with any queries and provide a welcoming atmosphere.

Our ilearn mentors are dedicated to help you achieve your goals. We understand that every student has unique needs, and our support services are tailored to each individual. Whether you're seeking advice about specific work or more general guidance, you can request a private chat with one of our mentors. During the session, we'll work together to identify key areas for improvement and provide help, recommend tasks, and offer advice on overcoming any challenges you may be facing. This is your time, and we're here to help you succeed.

In addition to offering personalised 1:1 support and workshops, we also organise regular competitions and activities that are open to all students. These competitions, ranging from reading challenges to poetry and pixel art competitions, allow you to showcase your skills and creativity while also learning and having fun.

We're dedicated to improving your learning experience by providing study-skills sessions that cover important skills such as research and referencing. By participating in these sessions and activities, you'll gain valuable knowledge and skills that will help shape your future and pave the way for success.

I think that the tutors at Leeds City College - you can get along really well with them, there's mutual respect and they ensure that we know what we're doing at all times and there is humour about it, because that builds a positive environment to work in.

LEEDS CITY COLLEGE STUDENTS' UNION



Leeds City College Students' Union (LCCSU) works in partnership with Leeds City College to improve the education of students, promote student-led activity and improve the overall student experience.

Our dedicated officers and president are here to ensure all aspects of your college experience are fantastic. We have plenty of exciting social events, trips, activities and societies for you to join, and volunteering and awareness campaigns for you to support.

So what are you waiting for? Get to know us on campus and if you have any questions email us at su.enquiries@leedscitycollege.ac.uk

STUDENT VOICE

It's important for students to have their say and our Students' Union officers act as representatives for different groups. There are opportunities for you to become a student leader, have your say at college and in the city, and vote in our yearly elections.

Find out more



ACTIVITIES AND SOCIETIES

We want you to have the best time at college and our student societies offer you the chance to meet learners from across college who share your interests or passions.

Here are some of our most popular clubs and societies:

- Basketball Society
- Gaming Society
- LGBTQ+ Society
- African Caribbean Society
- Islamic Society
- Football
- Badminton



A message from Vwaire Ikwe, LCCSU President

"Hello everyone!

My name is Vwaire, and I am the Students' Union President. The Students' Union is here to represent you, support you, and create opportunities that make your college experience memorable. Throughout the year, we'll host events, run initiatives, and collaborate with staff to make sure your time at college is fun, impactful, and inclusive.

The college is your space, your experience, and your future and we're here to help you make the most of it. Here's to a year of new memories, growth, and connection.

**Warm wishes,
Vwaire"**

Support



Support with disabilities and learning difficulties

If you have a support need or disability, we'll take an inclusive approach to get you the help and interventions you need to progress – no matter your age or the stage of your learning journey.

Our specialist staff are here to support you throughout your time with us. Their combination of experience, understanding and care, ensures the best support, academic and emotional, is available to those who need it.

Students with a learning need or disability can access support through their relevant curriculum teams. For those with an education, health and care plan (EHCP), our committed High Needs team will ensure appropriate interventions are put in place and monitored. For more information visit leedscitycollege.ac.uk/student-life/send or email SENDteam@leedscitycollege.ac.uk

Support with finance

Don't let financial concerns hold you back. At college, there are lots of ways we can support you with course-related costs such as travel passes, meals, childcare and much more. For more information, please visit the Financial and Welfare Support page at leedscitycollege.ac.uk/financial-support

Support with childcare

The Care to Learn scheme pays up to £180 per child, per week for student parents aged 20 and under. The college's Financial Welfare Team can help you find a childcare provider and apply for funding.

For more information, visit: gov.uk/care-to-learn

Older students may be eligible for help with childcare through our student bursary funds.

Visit: childcarechoices.gov.uk

Support with exams

For exams, we're able to assess for Exam Access Arrangements (EAA). Where there is a need for EAA during exams this can be in the form of readers, scribes, prompts, additional time or rest breaks. Where required, assistive technology, software and/or materials in alternative formats can also be provided to accommodate your needs. On some occasions, a smaller room can be sourced for examinations.

Support with studies

We offer advice and assistance to you both before and during exams – ensuring you get the support you need and that you're equipped to succeed. If you have any questions, concerns or just need to talk to someone, coaching tutors within each department will be happy to help.

Careers support

Once you're a student with us, you can access additional career or progression support. Our Careers, Work Experience & Progression team in Student Life can provide advice and connect you with career advisors. For more information, **please scan the QR code.**

Support for children looked after and care leavers

If you're a child looked after or care leaver, we're committed to supporting you both before you start your course and throughout your time with us. We have a discreet support team that works collaboratively with young people, social workers, teachers, carers, SENCOs and virtual schools, to ensure you have a smooth transition to further education. For more information, **please scan the QR code.**

Scan here



Scan here



Special Educational Needs and Disabilities (SEND) Support

Are you a student with special educational needs and disabilities that needs specialist support? We're here to help.

Our friendly Coaching Tutors act as a safety net for students. They ensure measures are put in place so that everyone has a positive experience at the college and their needs are supported.

By the end of college, you will have met or made good progress across all areas, including developing skills for adulthood, employment, community, inclusion, independent living and health.



1.

Wave 1 – Quality First Teaching+ includes:

- ◆ In-class differentiation
- ◆ Support from a coaching tutor or key
- ◆ Person support
- ◆ Access to assistive technology
- ◆ Risk assessments
- ◆ Medical storage and access
- ◆ arrangements
- ◆ Oasis rooms

2.

Wave 2 – Targeted Support includes:

- ◆ Small group work
- ◆ Specialist assistive technology
- ◆ Exam access arrangements
- ◆ Aids and adaptations (including adjustable tables and chairs)
- ◆ Learning Support Assistants
- ◆ Specialist SEND professionals provide advice and guidance to staff and students
- ◆ Risk assessments
- ◆ Transition support

3.

Wave 3 – Specialist/High Needs Support includes:

All of Wave 1 and 2 and then the following:

- ◆ Meet and greet
- ◆ Personalised timetables
- ◆ Transitions to support familiarisation of campus and classrooms
- ◆ Personal care, including access to hoists and changing tables
- ◆ In-class and out of class support at ratio as stated in EHCP provisions
- ◆ Therapeutic interventions
- ◆ Support to develop independent living skills, in-line with EHCP provisions
- ◆ Out of class support and additional interventions, in-line with EHCP provisions
- ◆ Referrals to specialist support services, such as Child and Adolescent Mental Health Services (CAMHS), careers, and mental health and wellbeing services

Support for Learners with an Education, Health and Care Plan (EHCP)

At Leeds City College, we provide a service for all students across the college. The High Needs team is committed to helping people with learning difficulties/disabilities to overcome the barriers within learning, identify strategies that will help them in adulthood, build on personal and social skills and be fully integrated into the college community.



Students who do not have an EHCP but require some support will receive this through Wave 1 (Quality First Teaching) and targeted support. You should apply for your chosen program and discuss your support requirements at the interview.

We have a range of facilities that allow us to meet the needs of our students.

Support will be assessed on an individual basis and will vary depending on your assessed needs or education, health and care plan (EHCP).

A support plan will be created with the student and, if appropriate, will be shared with tutors and co-professionals such as learning support assistants or teaching assistants. We also have dedicated quiet and safe spaces known as Oasis rooms - for students during times of sensory overload, mental health issues, crisis or experiencing periods of sudden change.

For more information on support, **please scan the QR code.**





Quieter Open Events

If you would like to visit our campus, why not attend one of our quieter open events? They are ideal for those wanting to avoid the hustle and bustle of our larger events. Limited visitor numbers ensure a quieter environment in which to start shaping your future.

See our upcoming Open Events

Click here



If you would like any additional support or assistance prior to, or during an open event, please email [**EventsMarketing@luminare.ac.uk**](mailto:EventsMarketing@luminare.ac.uk)

For me because I've got autism and I'd sometimes have trouble understanding things because I need stuff breaking down into detail. I have tutors that understand me a bit more.



**LEEDS CITY
COLLEGE**

There's so much more to learn

Our Adult Courses are here to help you achieve. Keen to develop your skill-set, deepen your knowledge in a subject or pick up a new hobby?

Whether it's a professional course to further your career, an essential qualification to boost your CV or a leisure course 'just for fun' - we have a wide range of exciting, challenging and inspiring courses.

Need to boost your English, maths or digital skills? Want to explore a new hobby or get to university in just one year? We're here to help you get there.

Whichever course you choose, our adult learning offer is designed to fit your life. You can study part-time, in the evening, online or at one of our welcoming campuses. Eligible learners can even **study some Level 3 courses for free!**

Take the next step with flexible, supportive learning that works for you.



leedscitycollege.ac.uk/adult | 0113 386 1997 | contact@leedscitycollege.ac.uk

Contact Us

Course enquiries

Call 0113 386 1997 or visit [leedscitycollege.ac.uk](https://www.leedscitycollege.ac.uk)

Our campuses

Mabgate Campus
74–76 Mabgate
Leeds LS9 7EA

Printworks Campus
Hunslet Road
Leeds LS10 1JY

Temple Newsam Home Farm
Temple Newsam Road
Leeds LS15 0BG

Park Lane Campus
Park Lane
Leeds LS3 1AA

Quarry Hill Campus
Playhouse Square
Leeds LS2 7BS

Our centres

223 North Street
Sheepscar
Leeds LS7 2AA

Morley Adult Learning Centre
Commercial Street
Leeds LS27 8HY

Somerville House
Leathley Road
Leeds LS10 1BG

Deacon House
Seacroft Avenue
Leeds LS14 6JD

Rothwell Centre
Marsh Street
Leeds LS26 0AE

University Centre Leeds
Mabgate Campus
68 Mabgate
Sheepscar
Leeds LS9 7DZ

Joseph Priestley Centre, Beeston
Burton Avenue
Leeds LS11 5ER



Leeds City College is a member of Luminate Education Group

Disclaimer: The information in this guide is accurate at the time of printing, however changes may take place. Some variation may occur as a result of circumstances beyond our control. Please see our website www.leedscitycollege.ac.uk for the most up-to-date information regarding our courses and student support.



See our upcoming Open Events



Click here

