



**LEEDS CITY
COLLEGE**



16-18

SCHOOL LEAVER

PROSPECTUS

Open Events

Discover what's in store at our open events

Wondering what the next step in your education will be? Dreaming of university, an apprenticeship or a technical T Level? You might be looking for professional, leisure or skill-centred courses tailored for adults? Explore all your options at one of our upcoming open events.

4 October 2023
4–7pm

20 January 2024
10am–1pm

16 May 2024
4–7pm

16 November 2023
4–7pm

20 March 2024
4–7pm



Alternatively, students who'd benefit from a less stimulating environment are invited to attend our quiet open events. These are designed to provide the time and space for detailed conversations about your transition to college. Staggered arrival times mean fewer visitors on campus and allow for a quieter environment in which to start shaping your future.



If you'd like us to book a British Sign Language interpreter or you require any additional support at the open events, please send an email to **EventsMarketing@luminate.ac.uk**

Book your place now:

leedscitycollege.ac.uk/events

0113 386 1997

contact@leedscitycollege.ac.uk

For any apprenticeship enquiries:

0113 284 6464

apprenticeships@leedscitycollege.ac.uk



Welcome to Leeds City College

At Leeds City College we aim to provide the best possible experience so that every student is able to develop and progress in their chosen course of study.

Choosing to study with us means that you'll be learning at a college that is rated 'Good' with 'Outstanding' grades by Ofsted.

We're committed to developing courses that match local and regional skills needs so that you're well-equipped for your future career. From full-time and part-time courses to apprenticeships and traineeships, we cover almost all subject areas.

We work with some of the best employers and organisations in the region, many of whom are helping us design and deliver our courses, and providing work placement and apprenticeship opportunities that'll give you real-world experience.

Providing diverse and inclusive spaces for you to study in is at the heart of what we do, and with us, you'll have world-class facilities to train in. You'll also have access to teaching staff who have worked in the industry and who'll help you gain insight and knowledge as you make decisions about your future. We also have a wealth of extracurricular activities for you to get involved in beyond the classroom, as well as additional support for your studies and wellbeing, should you need it.

We're confident that no matter where you are in your educational journey, we can help you reach your full potential.

We look forward to welcoming you on campus.

Bill Jones
Executive Principal – Leeds City College

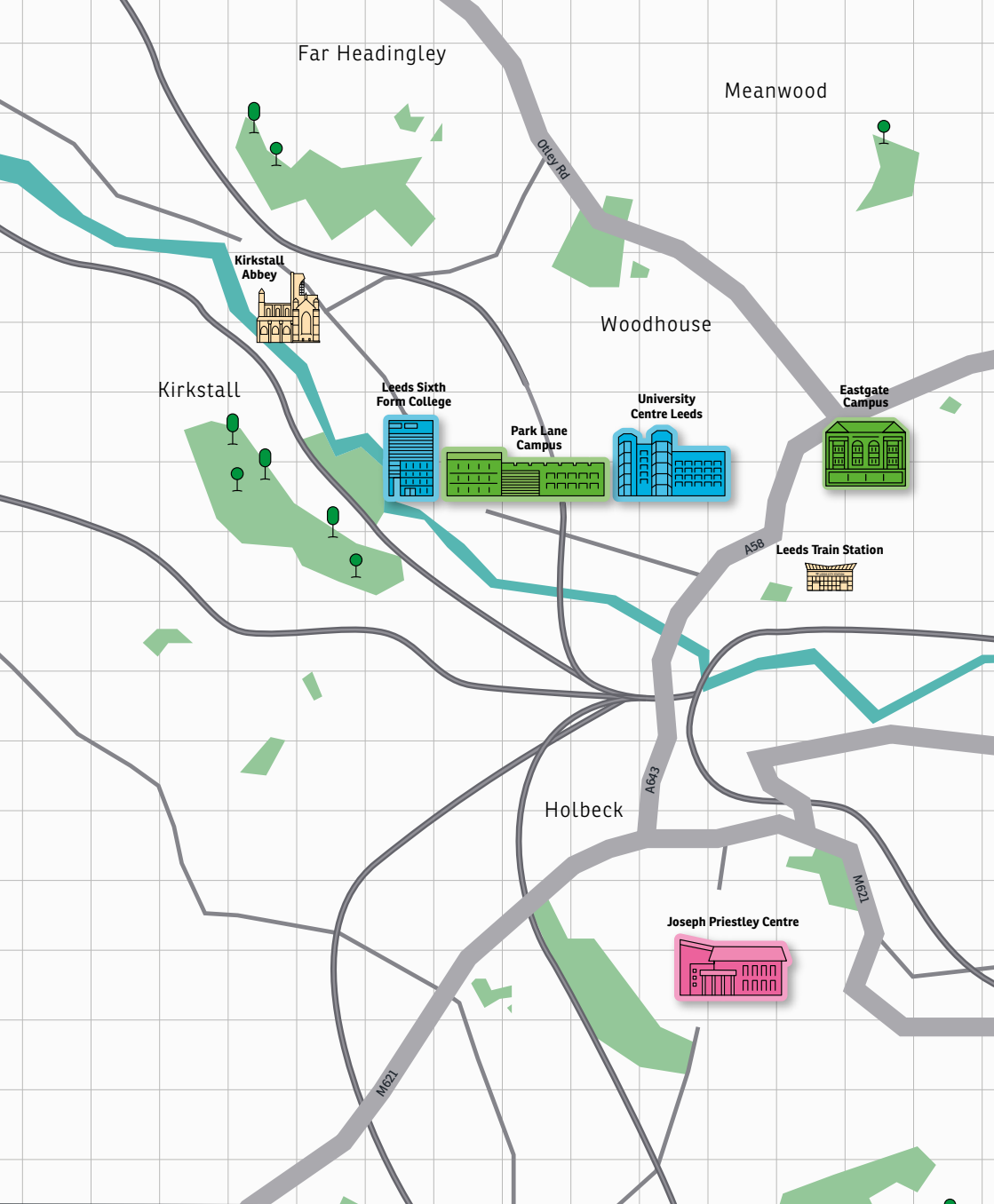


Contents

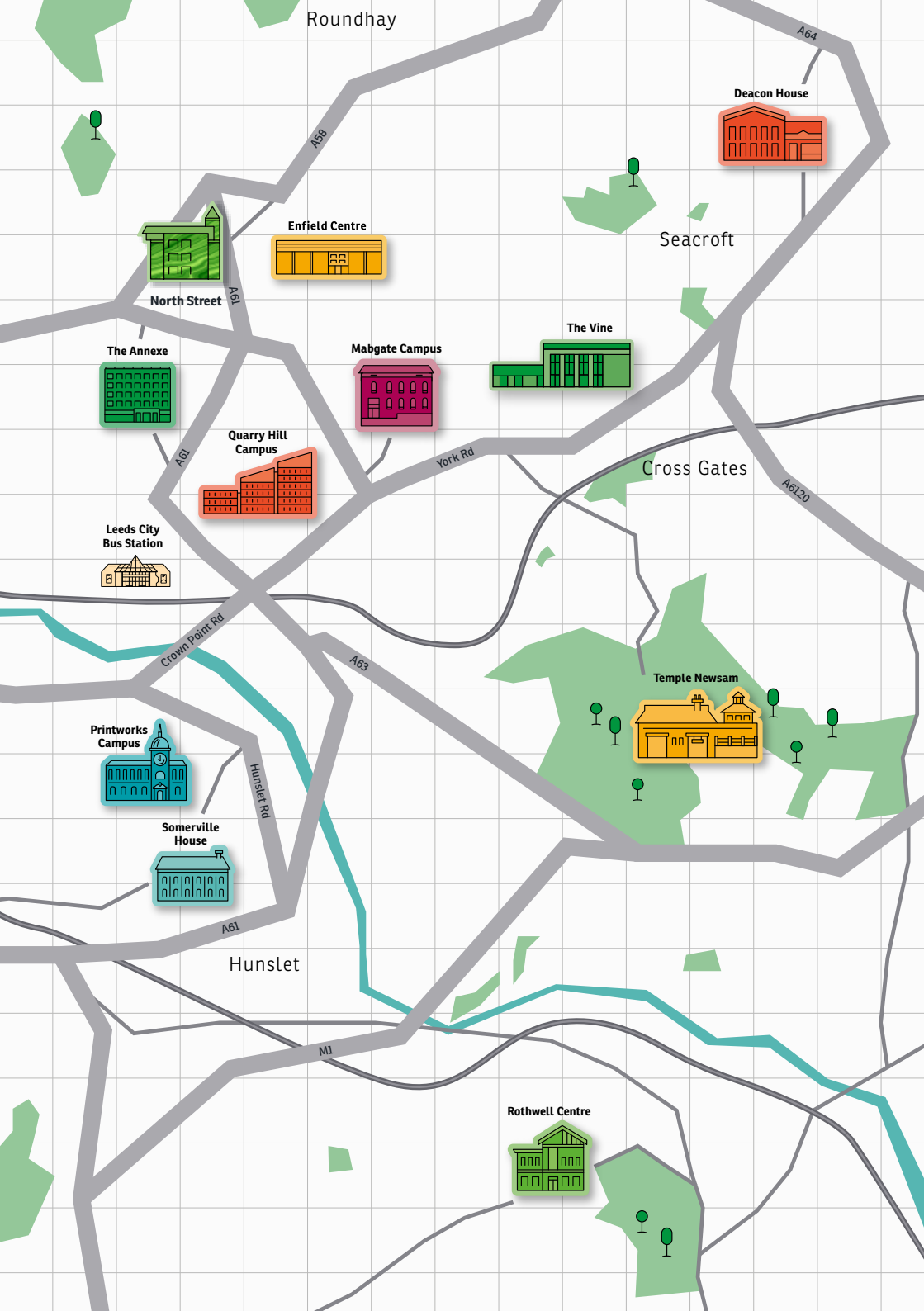
Campus map	6
Our campuses	8
Entry requirements	14
Your journey	15
School of Animal Care & Land Management	16
School of Applied Science	21
School of Business	27
School of Creative Arts	32
Music & Performance Production	32
Creative Media & Digital Arts	41
Visual Arts	49
School of Digital & IT	56
School of Engineering	62
School of Events, Enterprise & Employability	73
School of Hair, Beauty & Media Makeup	80
School of Social Science	88
Education & Childcare	88
Wellbeing Hub	93
Health Science & Social Care	94
Public Services	99



School of Sport Science & Exercise	103
School of Travel, Food & Drink	109
Food & Drink	109
Travel, Tourism & Aviation	115
Supported Engagement	120
Student Life	121
Apprenticeships at Leeds City College	122
T Levels	124
English for Speakers of Other Languages (ESOL)	125
STEM (Science, Technology, Engineering and Maths)	126
Foundation Studies	127
14+ Academies	128
iLearn	130
Safeguarding and Wellbeing	131
Leeds City College Students' Union (LCCSU)	133
Support	134
Special Educational Needs and Disabilities	136
Contact us	138



Campus map



Roundhay

A64

Deacon House

Seacroft

Enfield Centre

North Street

The Annexe

Mablegate Campus

The Vine

Quarry Hill
Campus

York Rd

Cross Gates

A6120

Leeds City
Bus Station

Crown Point Rd

A63

Temple Newsam

Printworks
Campus

Hunslet Rd

Somerville
House

Hunslet

M1

Rothwell Centre

Mabgate Campus



DIRECTIONS



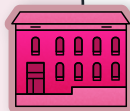
An old warehouse designed to shake up the traditional learning setting with eco-friendly open-plan spaces and specially designed classrooms, Mabgate puts the emphasis on creativity and wellbeing, supporting students' development and progression. Students will participate in social enterprise projects in action with RE: getting first-hand experience of how a circular economy can be created.

Mabgate Campus is home to:

- School of Events, Enterprise & Employability
- School of Social Science (Public Services)
- University Centre Leeds, Creative Arts
- Apprenticeships (more information on the full offer on [page 122](#))

19-minute walk from the train station

8-minute walk from the bus station



Park Lane Campus



DIRECTIONS



Park Lane, located within easy walking distance of parks, cafes and shops, is an innovative place to study. Our state-of-the-art spaces enhance learning, a prime example being our STEM labs which include a pharmacy space with consultation room and dispensary. We're committed to sustainability and our ECO-POWR gym converts students' energy into electricity which is used to power devices within the college. In addition to the gym, students have spaces to relax and take a break from studies with room to read or catch up with friends over a game of table tennis.

Park Lane Campus is home to:

- School of Applied Science
- School of Sport Science & Exercise
- Leeds Sixth Form College
- Leeds Sports Connect
- Teacher Development Centre
- Talented Athletes Scholarship Scheme (TASS)
- Apprenticeships (more information on the full offer on [page 122](#))

15-minute walk from the train station

21-minute walk from the bus station



Printworks Campus

In the Southbank area of Leeds, the listed building of our Printworks Campus provides a striking backdrop for students to learn and train in realistic, industry-standard environments. The campus is home to innovative digital labs, world-class kitchens, tailored engineering workshops and cutting-edge studios, as well as providing real working environments in the commercial Printworks Kitchen & Bar and the Salon & Spa, both open to the public.

Printworks Campus is home to:

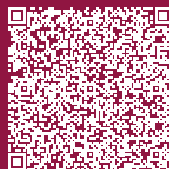
- School of Animal Care & Land Management (classroom study at Printworks Campus and practical learning at Temple Newsam)
- School of Business
- School of Digital & IT
- School of Engineering
- School of Hair, Beauty & Media Makeup
- School of Travel, Food & Drink
- Apprenticeships (more information on the full offer on [page 122](#))

14-minute walk from the train station

15-minute walk from the bus station



DIRECTIONS



Quarry Hill Campus

Our health and care apprenticeships are delivered at our Eastgate Campus.
More information on page 122.

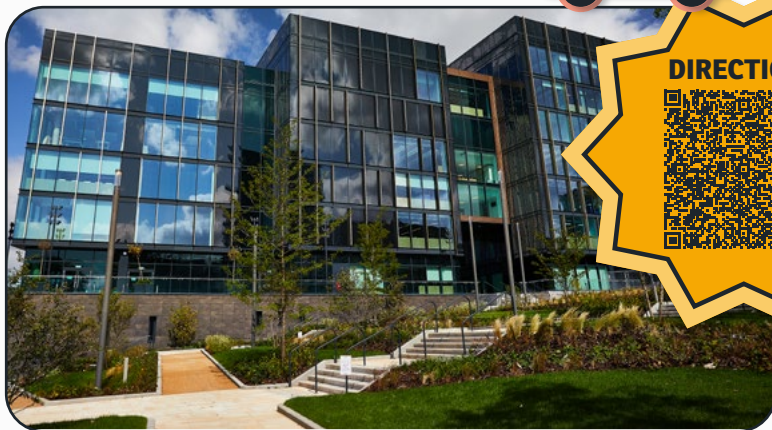
Reflecting the vibrancy of Leeds' Cultural Quarter through its innovative design, Quarry Hill prides itself on strong industry links and cutting-edge facilities. The campus boasts specialist childcare and public training resources, health science labs and a practical care suite, creative digital technologies, and industry-standard studios and theatres.

Quarry Hill Campus is home to:

- School of Creative Arts
 - Creative Media & Digital Arts
 - Music & Performance Production
 - Visual Arts
- School of Social Science
 - Education & Childcare
 - Health Science & Social Care
 - Public Services
- Apprenticeships (more information on the full offer on [page 122](#))

14-minute walk from the train station

2-minute walk from the bus station



DIRECTIONS



Somerville House

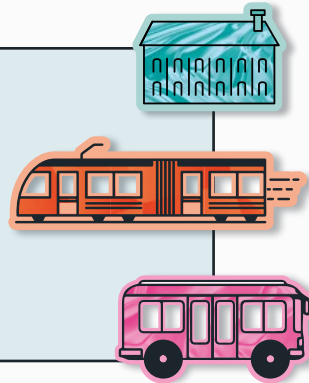
A small centre near our Printworks Campus, Somerville House offers a variety of workshops for learners aged 16 to 24 who want to develop their social and communication skills alongside their English and maths. Class sizes are small, with a high staff to student ratio. The centre environment is one of calm and support, with dedicated spaces where students can rest and reflect.

Somerville House is home to:

- Supported Engagement Programmes

19-minute walk from the train station

20-minute walk from the bus station



Temple Newsam Campus



DIRECTIONS



Get hands-on practical understanding of raising farm animals and observing wildlife at our Temple Newsam Campus, located on the picturesque Home Farm. A great opportunity to experience one of Europe's largest working rare breed farms, students will also have access to the animal care centre, which is home to small mammals and exotic animals.

Temple Newsam Campus is home to:

- School of Animal Care & Land Management
- Apprenticeships (more information on the full offer on [page 122](#))

20-minute walk from the bus stop. (Buses from Selby Road and New Temple Gate are available from Leeds city centre.)

Flexi bus – an on-demand bus service is available covering the east of Leeds.



Entry requirements

If you don't meet our exact entry requirements, don't worry! We'll always consider your personal circumstances and help you find the best course for you. Because entry requirements can vary for different courses, we've detailed our requirements in this guide.

It's not a problem if you haven't got your English and Maths GCSEs at grade 4. They'll be built into your course alongside your subject.

Due to their content, some courses may need you to have specific GCSEs at grade 4 or above. This will be explained when you speak to one of your department tutors.

Level 4

You typically need to have A levels or Level 3 Diploma or Access qualification. NVQ Level 3 may be accepted in some cases.

Level 3

You typically need to have five GCSEs or equivalent grade 9–3, including Maths and English minimum grade 5/4.

Level 2

You typically need to have three/four GCSEs grade 9–3.

Level 1

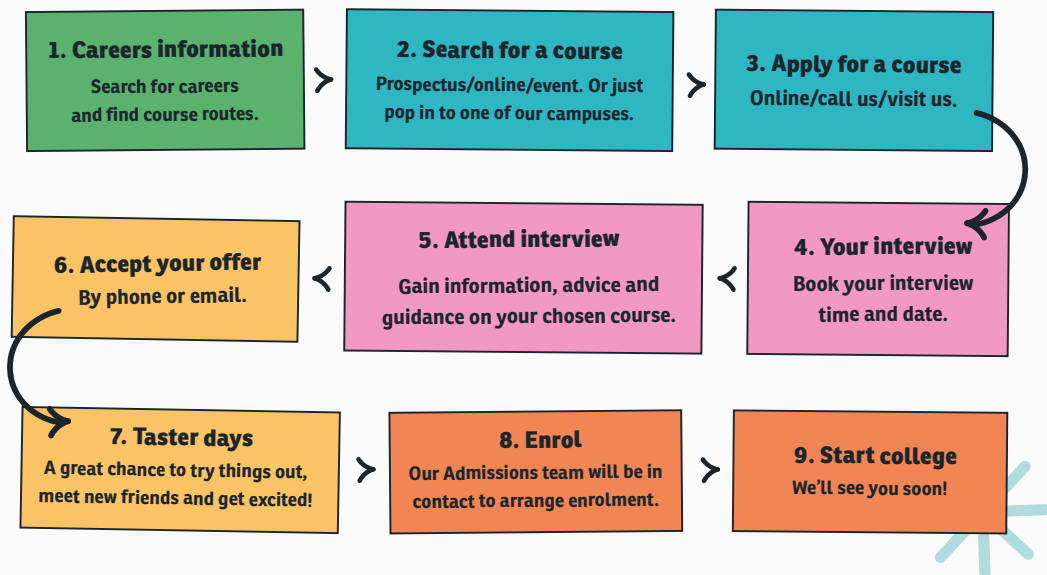
You typically need to have three/four GCSEs.

Entry



Your journey

Follow these simple steps for your journey to becoming a Leeds City College student.





School of Animal Care & Land Management

The School of Animal Care & Land Management is based at the scenic Home Farm at Temple Newsam, allowing students to put theory into practice in a natural environment. Courses cover the multiple principles and practices of animal care, including both domestic animals and wildlife. Land & Animal students can expect to gain land and animal management knowledge through practical and theoretical lessons in our excellent facilities.

Location: Temple Newsam Home Farm



Follow us on social: @animalcarelandmanagement



Apply Now!



Careers

Animal Care/Rescue Centre Worker

Animal care and rescue centre workers save vulnerable animals, using their skills to nurture and nurse them back to full health with a new lease of life. In this role, you'll look after sick and injured animals living in kennels, rescue centres or sanctuaries.

You'll groom and exercise them, prepare their food and feed them. You'll also administer medication, take animals to the vet, and clean and maintain their accommodation.

Kennel/Cattery Assistant

The perfect role for cat or dog enthusiasts, kennel or cattery assistants support senior team members with the care of feline and canine companions.

You'll have responsibility for dogs and cats in your care, performing duties such as cleaning to correct hygiene standards, exercising and grooming the animals.

You'll also prepare food and feed animals according to their dietary needs, as well as answering telephone calls and emails to take bookings.

Veterinary Care Assistant

Do you dream of supporting animals in their most vulnerable moments and nursing them back to health? As a veterinary care assistant, you'll aid professionals with the treatment of animals.

You'll work alongside surgeons and nurses, assisting them in providing care for sick and injured animals, and will carry out reception duties to support the vets.

You'll also be responsible for preparing food and feeding sick animals, monitoring their health, cleaning their accommodation and preparing equipment for surgeries.

Other careers could include:

- Dog Grooming
- Animal Welfare
- Dog Handling
- Kennel Assistant
- Veterinary Nurse
- Zookeeper
- Laboratory Technician

Animal care services occupations

Average salary

£22,360*

Jobs are set to increase by
4,601 in the next 3 years.

* Taken from the Department for Education's Labour Market Information For All API – correct as of August 2023

Courses

City & Guilds Skills for Working Life (Animals)

Entry Level 3 | Study length: 1 year full time

Use your natural nurturing skills as you learn how to care for animals. You'll become skilled in small animal maintenance and welfare, learning how to recognise their anatomy and check if a small animal is healthy. You'll also assist with the handling and restraint of small animals, and become familiar with the different types of housing and bedding necessary for certain small animals.

Land-Based Studies BTEC Introductory Certificate (Animal Care Pathway)

Level 1 | Study length: 1 year full time

Care for domestic animals with our practical course. You'll learn how to assist with the care of animals and ensure animal accommodation meets hygiene standards. You'll monitor health, feed animals, and learn to handle and restrain them when required. You'll be assessed via coursework and practical work; there are no exams.

Land-Based Studies BTEC Introductory Certificate (Horticulture Pathway)

Level 1 | Study length: 1 year full time

Develop your practical horticulture skills and your natural affinity for caring for and keeping plants healthy with this green-fingered course. Making the most of the wide variety of both ecological and managed horticulture areas at Temple Newsam, you'll develop your own personal progression plan, as well as learning how to prepare soil, grow plants, and understand key health and safety requirements.

Horticulture BTEC Technical Diploma

Level 2 | Study length: 1 year full time

Studying in the idyllic Temple Newsam estate with its renowned Walled Garden, glasshouse, 800-yard herbaceous borders, as well as the Rhododendron Walk, there really is no better place to study horticulture in the region. You'll take the next steps towards your future career by gaining the skills and knowledge you need to work with a variety of plants, progressing through modules such as land-based machinery operation, plant and soil science, and estate maintenance in horticulture.

Animal Care BTEC Technical Diploma

Level 2 | Study length: 1 year full time

Take your practical skills and knowledge to the next level with this course. You'll learn how to maintain animals' health and wellbeing. You'll also learn to prepare feed and select accommodation that is appropriate for the needs of different animals. This course offers a great way to turn your love of animals into a rewarding career.

City & Guilds Advanced Technical Diploma in Animal Management

Level 3 | Study length: 1 year full time

Unlock the advanced skills needed for careers in animal welfare. Available as a one- or two-year course, it provides you with a standalone qualification that can be topped up with a further year of study on the National Extended Diploma. You'll deepen your understanding of animals by evaluating their feeding plans, learning how to recognise different types of behaviour, as well as monitoring, grooming and ensuring their accommodation is well kept. You'll also assist in the administration side of things, ensuring records and files are adequately maintained.



*Taken from the Department for Education's Labour Market Information For All API – correct as of August 2023

Apprenticeships

The department offers the following apprenticeships:

- Animal Care and Welfare Assistant
- Dog Groomer

Please contact the Apprenticeship team to discuss your opportunities.

For more information on apprenticeships:



leedscitycollege.ac.uk/apprenticeships



0113 284 6464



apprenticeships@leedscitycollege.ac.uk

Veterinary nurses

Average salary

£21,840*

**Jobs are set to increase by
987 in the next 3 years.**

*Taken from the Department for Education's Labour Market Information For All API – correct as of August 2023



School of Applied Science

The School of Applied Science prepares future scientists, technicians and researchers for the industry by helping them develop their theoretical and practical knowledge in various branches of science. Students will study scientific theories and techniques, conduct experiments and gain practical skills in cutting-edge laboratories.

Location: Park Lane Campus



Follow us on social: @LCCApplied Science



Careers

Pharmacist

Are you interested in the field of medicine? As a public-facing pharmacist, you'll be responsible for dispensing prescription medicine to the public.

Pharmacists require strong scientific knowledge and attention to detail, using their skills to double-check dosages and ensure different treatments are compatible.

You'll also prepare medication, advise the public on over-the-counter medicine and treatment of minor ailments, liaise with doctors and supervise the preparation of any medicines.

Laboratory Technician

Is the laboratory your dream working environment? In this role, you'll carry out routine tests and checks while performing key technical support functions.

You'll possess strong scientific knowledge and will be up to date with health and safety best practices. You'll also be able to follow regulations and utilise scientific techniques.

Using established procedures, you'll assist scientists with their research, development, analysis and testing. Your critical eye will also prove essential for verifying and analysing the characteristics of materials or products.

Biological Scientist

Biological scientists examine and investigate the morphology, structure, chemistry and physical characteristics of living organisms, such as plants, animals and microbes.

You'll have an interest in organisms' relationships, environments and diseases, will possess strong biological knowledge and will know how to safely navigate a laboratory.

With your strong attention to detail, plus analytical and evaluative abilities, you'll be able to observe, discover and record biological findings – ranging from the cellular level to the ecosystem.

Other careers could include:

- Biomedicine
- Chemical Engineer
- Aeronautics
- Nursing and Midwifery
- Criminologist or Forensic Scientist
- Environmental Scientist
- Physicist
- Microbiologist

Courses

BTEC First Award in Principles in Applied Science + GCSEs

Level 2 | Study length: 1 year full time

Prepare for a career in science by applying logical thinking to areas such as chemistry, physics and biology. You'll learn more about the environment, planet Earth, energy and the universe, whilst conducting practical work in professional laboratories. You'll also have the opportunity to carry out multiple experiments, including rates of reactions and electrical circuits.

Applied Science BTEC Extended Certificate + GCSEs

Level 3 | Study length: This is a one-year course that can lead on to a Diploma course in year 2, subject to eligibility and funding.

Be in your element whilst taking the first step to completing a Level 3 qualification. You'll put your theories into practice in our practical laboratories, where you'll study biology, chemistry and physics. You'll also explore laboratory skills and develop scientific practical techniques that will strengthen your analytical and research abilities. This course is equivalent to one A level.

Applied Science BTEC Diploma + GCSEs

Level 3 | Study length: This is a second year option to top-up the Extended Certificate, subject to eligibility and funding.

Do you want a career in chemistry? This exciting second-year programme upgrades your National Extended Certificate to a Diploma. You'll expand your scientific knowledge by exploring key areas including biology, chemistry, physics, diseases and infections. You'll also learn about experimental design and statistical analysis. This course is equivalent to two A levels.

Applied Science BTEC NQF Foundation Diploma

Level 3 | Study length: This is a one-year course that can lead on to an Extended Diploma course in year 2, subject to eligibility and funding.

Challenge yourself whilst furthering your scientific knowledge with this useful course that strengthens your technical and transferable skills. Develop scientific techniques, conduct experiments, and study astronomy and infectious diseases – all while sharpening your communication, analytical and research abilities. This course is equivalent to one and a half A levels.

Applied Science BTEC NQF Extended Diploma Top-Up

Level 3 | Study length: This is a second year option to top-up the foundation diploma, subject to eligibility and funding.

Start thinking like a scientist with this Extended Diploma – your next step to scientific success. You'll work on a personal project, using your investigative skills, laboratory techniques and theoretical understanding to create practical work that highlights contemporary scientific issues. This course is equivalent to three A levels.

Applied Science BTEC Foundation Diploma – Biomedical Science

Level 3 | Study length: This is a one-year course that can lead on to an Extended Diploma course in year 2, subject to eligibility and funding.

Considering a career in biomedicine? This Level 3 qualification will build on your core science skills, challenging you to develop your knowledge whilst you learn about creating new therapeutic drugs and medical research. There's an emphasis on practical skills in this hands-on course – great for strengthening your research abilities. This course is equivalent to one and a half A levels.



*Taken from the Department for Education's Labour Market Information For All API – correct as of August 2023

Applied Science BTEC Foundation Diploma – Forensic Science

Level 3 | Study length: This is a one-year course that can lead on to an Extended Diploma course in year 2, subject to eligibility and funding.

Do you want to work in crime scene investigation or laboratory work? This first-year programme will give an introduction to the experience needed to pursue a career in criminology or forensics. You'll develop your core science skills, building your knowledge with an emphasis on practical skills to strengthen your technical and investigative abilities. This course is equivalent to one and a half A levels.

T Level in Laboratory Science

Level 3 | Study length: This is a two-year programme with an embedded nine-week work placement.

Develop your scientific knowledge whilst gaining real-world work experience in the pharmaceutical industry or the NHS, with this two-year programme. You'll build on your core scientific knowledge, including investigative skills, laboratory techniques and theoretical understanding. Then you'll put everything into practice with an embedded nine-week work placement. Equivalent to three A levels, this course is ideal for those looking to progress to university, an apprenticeship or employment.

Apply Now!



Apprenticeships

The department offers the following apprenticeship:

- Laboratory Technician

Please contact the Apprenticeship team to discuss your opportunities.

For more information on apprenticeships:



leedscitycollege.ac.uk/apprenticeships



0113 284 6464



apprenticeships@leedscitycollege.ac.uk

Physical scientists

Average salary

£47,840^{*}

**Jobs are set to increase by
784 in the next 3 years.**

*Taken from the Department for Education's Labour Market Information For All API – correct as of August 2023



School of Business

The School of Business prepares tomorrow's leaders for careers where strategic thinking and business acumen are critical for success. Each dynamic course covers multiple business and finance disciplines, allowing students to understand all aspects of the sector. Students can build their knowledge in a purpose-built space before exploring future opportunities.

Location: Printworks Campus



Follow us on social: @BusinessLCC



Careers

Marketing Director

Do you dream of directing marketing activity, including campaigns, website launches, communications and public relations?

In this role, you'll plan, organise, manage and coordinate various marketing tools – from marketing strategy and advertising, to customer communications and public relations (PR).

You'll need strong attention to detail, a thorough understanding of marketing, sales and business, and most importantly, a creative flair.

Finance Director

As a finance director, you'll provide guidance to clients and colleagues so they can make strong business decisions that support retention and growth.

You may be employed in a number of different environments, such as charities, general businesses and retail companies. You can also choose to work in the public or private sector.

You'll be a forward thinker and possess strong mathematical knowledge and the ability to consult and advise.

Human Resources Manager

Human resources managers plan, organise and direct people – ensuring that the training of industrial policies is maintained.

In this role, you'll also measure the effectiveness of an organisation's systems, alongside planning and implementing procedures to ensure a positive working environment.

You'll need to be customer-focused and balance what is best for a business and its employees. You'll also have good leadership skills.

Other careers could include:

- Project Manager
- Actuary Business
- Consultant Chartered Accountant
- Economist Statistician
- E-Commerce Consultant
- Business Owner
- Roles in the Finance, Law or HR Sectors

Courses

Business and Enterprise Technical Certificate

Level 2 | Study length: 1 year full time

Develop your business and enterprise knowledge with a hands-on approach. You'll explore multiple elements of business and gain an understanding of basic principles, such as finance and law. You'll also research and pitch your own business idea to potential investors. This is a great way to engage and apply your knowledge to real-life businesses.

Project management professionals

Average salary

£58,240*

Jobs are set to increase by
6,402 in the next 3 years.

Apply Now!



*Taken from the Department for Education's Labour Market Information For All API – correct as of August 2023

WORK SMARTER

Business BTEC National Foundation Diploma

Level 3 | Study length: This is the first year of a two-year course.

You'll study the Extended Diploma in your second year.

Become a business expert on this skills-enhancing programme. You'll gain skills in areas such as marketing, events and finance. By the end of the course, you'll have developed your own marketing campaign, managed an event, and refined your knowledge and skills in personal and business finance.

Business BTEC Extended Certificate

Level 3 | Study length: This is the first year of a two-year course. You'll study the Diploma in your second year.

Master market gaps and boost businesses with this exciting course. Deepen your business knowledge, gain transferable skills and identify your own specialism. You'll also develop and deliver your own marketing campaign, and learn how to plan and manage finance in personal and professional contexts.

Disclaimer – this course is for Level 3 students who need to study either maths or English language alongside their Level 3 programme.

Transition Programme – Business and Administration

T Level | Study length: 1 year

Do you want to move into a management or administration career and move into a T Level course next year? This T Level transition course will allow you the time to prepare yourself for a two-year T Level course, focusing on industry-relevant technical knowledge, skills for successful study, and English and maths/digital top-up. This is a fantastic opportunity to become aware of T Level study formats and will allow you to potentially springboard on to the two-year T Level route.



* Taken from the Department for Education's Labour Market Information For All API – correct as of August 2023

Management and Administration Technical Qualification

T Level | Study length: 2 years full time

Do you have a passion to start a career in management or administration? This T Level will develop your knowledge and understanding of a range of subjects including finance, building and managing teams, and project and change management. It's a fantastic opportunity to learn important theoretical knowledge of how a business operates, whilst getting hands-on experience in the workplace.

Apprenticeships

The department offers the following apprenticeships:

- Business Administrator
- Customer Service Practitioner
- Customer Service Specialist
- Retailer
- Retailer Team Leader
- Team Leader/Supervisor

Please contact the Apprenticeship team to discuss your opportunities.

For more information on apprenticeships:



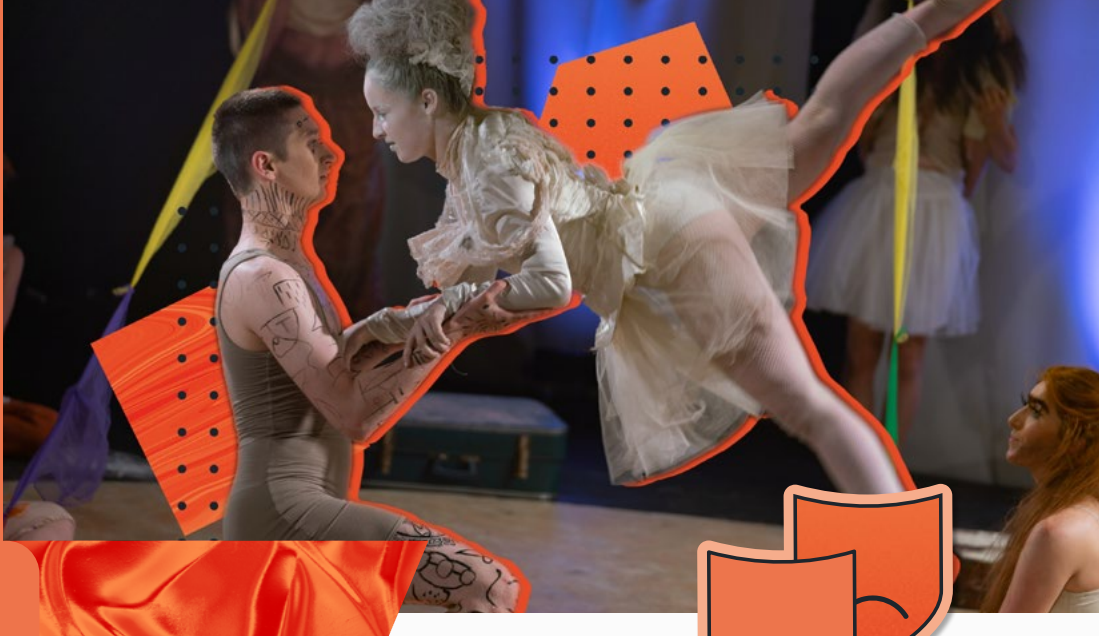
leedscitycollege.ac.uk/apprenticeships



0113 284 6464



apprenticeships@leedscitycollege.ac.uk



School of Creative Arts

Music & Performance Production

The School of Creative Arts is divided into three departments: Musical & Performance Production, Creative Media & Digital Arts, and Visual Arts. Music & Performance Production is about what happens on the stage, behind the stage and in the studios. Our performers, engineers, designers and managers create live performance and recorded work in many different disciplines and then bring it to life for an audience.

Location: Quarry Hill Campus



Follow us on social: @CreativeartsLCC



Careers

Costume Designer

Do you dream of designing and making costumes for an array of performers? As a costume designer, you'll create a variety of costumes for different themed productions.

In this role, you'll need to have a keen eye for detail. You'll be able to work to a brief and translate designs into wearable items that are functional for performance.

You'll also need to have an understanding of stages and sets, and how costume textures need to balance and complement each set, as well as reflecting the setting of the production.

Professional Musician

Do you dream of playing your instrument for an array of performers, performing in small intimate venues, recording studios or in front of large audiences (on an arena tour)? As a touring musician or session musician you'll experience a wide range of opportunities working with other like-minded musicians and performing a wide range of musical styles.

In this role, you'll need to have a high level of skill and knowledge of your instrument. You'll be able to work to a brief to create and interpret an artist or music producer's vision for a performance or recorded music. You'll be able to adapt your playing style to suit different genres of music.

You'll also travel to different music venues around the UK and abroad, and work with a wide range of other music professionals such as producers, musical directors, solo artists and their technical teams. You'll be self-motivated, adaptable, reliable, flexible and efficient, and will build your career through networking, being professional and reputable.

Other careers could include:

- Actor
- Dancer
- Musician
- Music Producer
- Stage Manager
- Stage Sound/Lighting Designer
- Theatre Technician
- Session Musician
- Touring Musician
- Composer

Musicians

Average salary

£42,120*

Jobs are set to increase by
381 in the next 3 years.

*Taken from the Department for Education's Labour Market Information For All API – correct as of August 2023

Courses

Music Introductory Diploma

Level 1 | Study length: 1 year full time

Discover how to turn your passion for music into a rewarding career. Whether you want to be a performer or producer, engineer or songwriter, DJ or rock guitarist, this course is a starting point for all those careers. To develop your skills, enhance your academic ability and enjoy your music through study, you'll work with a small group and try many different genres and techniques.

Performing Arts Introductory Diploma BTEC

Level 1 | Study length: 1 year full time

Whether you're new to performing arts or wish to use performing arts to develop your confidence – this course is for you! You'll train in acting and movement, and learn how to plan, prepare and perform exciting theatre performances. During your year you'll participate in specialist workshops which include: acting for live theatre, acting for camera, set design and prop design, movement sessions, devising theatre and script writing. You'll use these skills you've developed and showcase your work in two major productions over the year, giving you the confidence to progress on to your next chosen pathway.

Acting BTEC Diploma

Level 2 | Study length: 1 year full time

Let your career take centre stage as you gain professional performance skills and industry experience. You'll be given the opportunity to develop sector-specific knowledge, technical and practical skills, and apply these in work-related environments. You'll explore various styles and techniques in improvisation, movement and voice as well as devise performance work and collaborate with other disciplines. You'll work closely with leading employers and industry professionals, performing in different spaces throughout the year and executing your final performance in the Chroma-Q Theatre, all of which will prepare you for the working world or progression on to Level 3.

Dance BTEC Diploma

Level 2 | Study length: 1 year full time

Gain professional dance skills and industry experience as you move through this exciting dance course. You'll be given the opportunity to develop sector-specific knowledge within urban, contemporary and jazz dance styles, and apply these skills in work-related environments.

You'll explore various styles and techniques, choreograph performance work and collaborate with other disciplines – culminating in a final showcase performance in our stunning Chroma-Q Theatre.

Music Industry Skills (Performance) BTEC Diploma

Level 2 | Study length: 1 year full time

Fine-tune your practical and creative skills on this inspiring course that combines practical knowledge with creative ability. Alternate between performing, promoting yourself as an artist and producing a professional portfolio that reflects your personal development. You'll also explore a range of musical techniques through practical workshops and activities, using what you've learnt to influence your performances in our industry-standard facilities.

Music Industry Skills (Production) BTEC Diploma

Level 2 | Study length: 1 year full time

Are you ready to discover how music production and sound engineering can transform musical compositions? You'll work on your own professional portfolio, using it to showcase your new-found skills and knowledge. You'll also explore music creation whilst learning how to promote yourself in the industry. It's the perfect course for anyone looking to start a career in music.



* Taken from the Department for Education's Labour Market Information For All API – correct as of August 2023

Musical Theatre BTEC Diploma

Level 2 | Study length: 1 year full time

Learn how to dazzle and captivate audiences on this Musical Theatre course designed to help you develop three disciplines: acting, singing and dance. Develop professional musical theatre skills and industry experience. You'll be given the opportunity to develop sector-specific knowledge within singing, acting, jazz dance and movement, and apply these skills in work-related environments.

You'll explore various styles and techniques, enhance your vocal and singing skills, and create performance work collaborating with other disciplines. You'll work closely with leading employers and industry professionals, performing in different spaces throughout the year and executing your final performance in the Chroma-Q Theatre, all of which will prepare you for the working world or progression on to Level 3.

Backstage Production BTEC Extended Certificate

Level 2 | Study length: 1 year full time

Learn how to create the magic that happens onstage! During this course you'll gain an understanding of the different elements of backstage theatre, work on live productions, and deliver shows that excite and delight audiences. You can train on the technical lighting and sound equipment, or get more creative with costume or prop making – we do it all!

Performing Arts Practice (Acting) BTEC National Foundation Diploma

Level 3 | Study length: This is the first year of a two-year course.

You'll study the Extended Top-Up Diploma in your second year.

Show us you're a class act with this programme. You'll develop the vocal and physical skills needed to shine on stage and screen while exploring acting styles such as naturalism, surrealism and drama improvisation. Gain the necessary skills to succeed in acting, including physical, voice, scriptwriting, audition techniques and abstract performance.

Apply Now!



Performing Arts Practice (Acting) BTEC Extended Top-Up Diploma

Level 3 | Study length: This is the second year of a two-year course.

Step in front of the camera and focus your acting. This top-up course will give you the knowledge and preparation needed to enter the industry with a fuller understanding of acting. From stage acting, devising, improvisation and acting, to performing for the camera and scriptwriting, we work across many acting disciplines to help you succeed.

Performing Arts Practice (Dance) BTEC National Foundation Diploma

Level 3 | Study length: This is the first year of a two-year course.

You'll study the Extended Top-Up Diploma in your second year.

Step up your dance technique and prepare for live performance with this programme which focuses on contemporary, jazz and urban dance styles. You'll enhance your choreography skills through various settings while learning about the performing arts industry first hand. You'll also perform in-house and tour locally.

“I decided to study at Leeds City College because I liked the equipment and the rooms that they had, and I liked how it was a whole new space.”

– Rachel, Acting student

Let's see!



Performing Arts Practice (Dance) BTEC Extended Top-Up Diploma

Level 3 | Study length: This is the second year of a two-year course.

Become a well-rounded performer who's ready for the stage. From contemporary, jazz and urban to ballet and musical theatre, you'll deepen your technique that will support you with your next steps by creating audition material including a promotional portfolio. You'll gain practical experience by choreographing and performing in various styles at a networking showcase for friends and family, including professional artists. Your course culminates with a full-scale production supported by our fabulous Theatre Design and Production students in our Chroma-Q Theatre.

Music (Performance) BTEC National Foundation Diploma

Level 3 | Study length: This is the first year of a two-year course.

You'll study the Top-Up Diploma in your second year.

Craft your career as a performing musician with this programme. You'll develop your musicianship, work in an ensemble, reflect on current industry issues and understand how to become a freelance musician. You'll also explore varied compositional contexts through the use of industry-standard music software.

Music (Performance) BTEC Extended Top-Up Diploma

Level 3 | Study length: This is the second year of a two-year course.

Take the next step towards a career in the music industry. Following on from the National Foundation Diploma Level 3, you'll refine your skills and unleash your creativity in the musical realm. You'll further develop your ensemble skills and performance techniques through a collaborative project, whilst widening your composition skills. You'll also create a portfolio project and understand how to promote yourself as a performing musician.



*Taken from the Department for Education's Labour Market Information For All API – correct as of August 2023

Music (Production) BTEC National Foundation Diploma

Level 3 | Study length: This is the first year of a two-year course.

You'll study the Top-Up Diploma in your second year.

Press play on your career with this specialist programme. Focusing on using recording studio and digital audio workstation (DAW) technology to capture, manipulate and produce music, you'll explore areas including live sound, sound recording, sequencing, mixing, mastering and composition. You'll also reflect on current industry issues and understand employability in the music production sector, all while gaining an understanding of production processes and self-promotion as a music producer.

Music (Production) BTEC Extended Top-Up Diploma

Level 3 | Study length: This is the second year of a two-year course.

Amplify your music career and find your feet as a producer. Following on from the National Foundation Diploma Level 3, you'll advance your knowledge and skills across specialist areas through collaborative and personal project work. You'll further explore specialist music production software, and deepen your knowledge of mixing, mastering and composition. You'll gain enterprise opportunities and understand how to promote yourself as a music producer.

Performing Arts Practice (Musical Theatre) BTEC National Foundation Diploma

Level 3 | Study length: This is the first year of a two-year course.

You'll study the Top-Up Diploma in your second year.

This energetic course combines acting, singing and dance. Experienced industry professionals will train you to become a versatile performer while you master techniques and prepare for future industry pathways through practical workshops. The fast-paced programme will also take you through musical theatre history, developing your skills and knowledge within various musical theatre genres.

Performing Arts Practice (Musical Theatre) BTEC Extended Top-Up Diploma

Level 3 | Study length: This is the second year of a two-year course.

Step into the spotlight with a programme that prepares you for the stage. Focusing on practical and theory across singing, acting, dance and performance, you'll develop the skills and knowledge to become a versatile performer. You'll work with industry professionals and gain work experience at companies and organisations, as well as understand the arts in your local community.

Theatre Design and Production BTEC National Foundation Diploma

Level 3 | Study length: This is the first year of a two-year course.

You'll study the Top-Up Diploma in your second year.

Work magic from behind the scenes with this programme covering all aspects of the backstage arts, from sound design, costume, hair and makeup, to lighting, stage management, set and props. After introducing you to the basics you'll choose to specialise in a pathway and hone your skills on productions in our amazing theatre and specialist production rooms.

Theatre Design and Production BTEC Extended Top-Up Diploma

Level 3 | Study length: This is the second year of a two-year course.

Identify your backstage specialism and define your skill set. In this second year Extended Diploma, you'll choose a pathway of either lighting, sound, stage management, hair and makeup, costume or set props. You'll acquire specialist skills, build a professional portfolio and lead a team of technicians or production artists on a large-scale production.

Access to the Creative Industries Diploma

Level 3 | Study length: 1 year full time

Harness your creative potential and fast-track to university. Ideal for people with industry experience looking for a career change or further learning, you'll choose to study a specialist subject in the creative industry and develop skills guided by experts who've worked in the field. You'll have access to our state-of-the-art industry-standard equipment and will learn critical thinking and writing in preparation for university.



School of Creative Arts

Creative Media & Digital Arts

Creative Media & Digital Arts offers study across media, including TV & Film, Journalism and Digital Media, Games Design, Animation and Esports, including some courses at Levels 1 and 2, Access Programmes and T Level Digital Production, Design and Development.

Location: Quarry Hill Campus



Follow us on social: @CreativeartsLCC



Careers

TV Producer/Journalist

Television producers coordinate and supervise all aspects of a TV programme – from the financing and casting contracts to administrative and creative decisions.

They usually have a background in broadcast or TV journalism, with strong skills in filming, editing and using the camera to tell a story.

You'll have strong attention to detail, along with a natural flair for storytelling and conveying messages to TV audiences through a lens. You'll also have a knack for plot division, working with writers to ensure scripts are captivating and compelling.

Video Content Creator

Video content creators shoot and edit video to capture important moments, events and clips that can then be structured into a visual narrative.

You'll need a creative flair, as well as good storytelling skills, in order to form different clips into an exciting sequence. You'll also be competent with cameras and able to edit using professional software.

Video content creators can work in a variety of contexts – you could work freelance or you may choose to work as part of an in-house marketing and advertising team.

Games Developer

Are you ready to create games that engage and challenge gamers around the world? Games developers create exciting new concepts that educate, entertain and inspire.

You'll need to be comfortable working on a 'project basis', taking on extra responsibilities in order to achieve the end goal. You'll also use your creativity and logic to design and program characters, levels and environments.

You'll be flexible and able to apply your skills to multiple genres, will have a strong understanding of industry-leading software and will be comfortable with programming.

Other careers could include:

- Digital Marketer
- Vision Mixer
- Film Director



*Taken from the Department for Education's Labour Market Information For All API – correct as of August 2023

Courses

Computer Games Skills Gateway Diploma

Level 1 | Study length: 1 year full time

Do you want to work in a fast-paced, exciting and multi-billion-pound industry? Then welcome to the exhilarating world of video game creation. You'll study multiple aspects of the gaming industry, gaining knowledge in areas such as media production, games engines and 3D modelling. You'll learn how to develop your creative ideas practically, designing 2D and 3D games, as well as building a video game on a professional games engine. From traditional gaming to the digital revolution, this course allows you to explore it all.

Digital Media Introductory Diploma BTEC

Level 1 | Study length: 1 year full time

Develop your creativity and digital style on this dynamic BTEC course. You'll use practical projects and specialist workshops to develop your skills whilst specialising in a particular area of interest. From video content and social media to websites, radio shows and podcasts, you'll delve into the digital world and use it to demonstrate and enhance your creativity.

Computer Games Skills Gateway Diploma

Level 2 | Study length: 1 year full time

Computer Games at Level 2 gives you the chance to turn your gaming ideas into a visual reality. You'll explore a host of technical skills such as animation, crafting creative concepts and bringing them to life using industry-standard software. You'll delve into the wider industry, examining how games appeal to and influence audiences whilst using your findings to create your own digital product. From digital art to sound processing, this course will help you gain confidence in a range of software, tools and technologies.

Creative Media Skills BTEC Diploma

Level 2 | Study length: 1 year full time

Are you interested in developing skills in the media? This diploma allows you to explore the industry and build your creative skills through practical projects and workshops. You'll use research, storyboards and scripts to create and produce short content, ranging from music videos to promotional marketing materials. You'll also learn how to edit images, audio and video using Adobe Creative Suite, developing advanced techniques for TV, film or journalism careers.

Access to HE in Computer Games Design and Development

Level 3 | Study length: 1 year full time

Delivered using industry-standard software/hardware for 3D modelling and games development, this Access to HE Diploma allows you to level up your skills. You'll get ready for a career in games design and development for creative industries by using packages such as Unreal Engine, 3DS Max/Maya, Adobe Suite and Visual Studio. You'll be fully supported through the programme and will gain support with writing your personal statement and applying to university.

Animation BTEC Extended Diploma

**Level 3 | Study length: 2 years full time
(1-year Diploma and 1-year Extended Diploma)**

If you dream of creating faraway galaxies or epic battles between heroes and villains, this course is for you. You'll learn how to use software and applications to create gripping on-screen imagery and stunning visual effects. Studying techniques used by the best animators and VFX artists, you'll produce 2D animations and 3D models, whilst learning how to edit and manipulate your creations. You'll also take advantage of our exciting industry links, such as ILM, Sleepy Game Studios and Yorkshire Games Festival.

Artists

Average salary

£35,880⁺

**Jobs are set to increase by
382 in the next 3 years.**

*Taken from the Department for Education's Labour Market
Information For All API – correct as of August 2023

Computer Games BTEC Extended Diploma

Level 3 | Study length: 2 years full time

(1-year Diploma and 1-year Extended Diploma)

Work towards becoming a games programmer, level designer, mobile developer or game writer, with this Extended Diploma in computer gaming. You'll build on your core skills, exploring game engines, modelling, level design and concept art in advanced detail. You'll master different game engines including Unreal, Unity and Stencyl, producing 2D and 3D models using industry-standard software such as 3DS Max and Maya. You'll also create your own gaming worlds and characters, learning how to captivate audiences through immersive designs and action.

Creative Media Practice (Journalism) BTEC National Diploma

Level 3 | Study length: This is the first year of a two-year course.

You'll study the Extended Top-Up Diploma in your second year.

Harness the power of presenting. Using broadcast, magazines and podcasts, you'll gather information, stories and news through hard-hitting interviews and investigative research. You'll use our industry-standard multi-camera TV studio and Adobe software to research and develop key journalistic technical and creative skills throughout this multimedia course.

Creative Media Practice (Journalism) BTEC Extended Top-Up Diploma

Level 3 | Study length: This is the second year of a two-year course.

You'll develop your investigative skills to produce a documentary, digging for surprising and interesting findings to create a hard-hitting feature. Following on from the Level 3 National Diploma, you'll seek out and interview experts, victims and other sources. You'll learn advanced camera and editing techniques using DSLR cameras and industry-standard software. We'll prepare you for your next steps, exploring career and university opportunities, and help you create your own brand image and promotional materials.

Creative Media Practice (Television and Film) BTEC National Diploma

Level 3 | Study length: This is the first year of a two-year course.

You'll study the Top-Up Diploma in your second year.

Lights, camera, action! This creative programme will teach you multiple aspects of filmmaking with the technical skills needed to succeed in the TV and film industry. Create promotional videos, TV shows, documentaries and short films, and learn how to use professional equipment, including our industry-standard TV studio.

Creative Media Practice (Television and Film) BTEC Extended Top-Up Diploma

Level 3 | Study length: This is the second year of a two-year course.

Get ready to produce a substantial short fictional film or documentary in your second year, building on the skills you learn on the Television and Film BTEC National Diploma Level 3. You'll develop advanced skills in filmmaking, using Adobe software and creating content in the TV studio. We'll prepare you for your next steps, exploring career and university opportunities, and help you create your own brand image and promotional materials.

Esports BTEC Extended Diploma

Level 3 | Study length: 1 year full time

Join the modern explosion that is Esports (electronic sports) – a new form of organised and competitive video gaming. This course equips you with a range of transferable skills for multiple sectors, including sport, IT, marketing, business and enterprise, as well as other creative industries. You'll delve into the Esports world, gaining social, physical, mental and financial knowledge to support your gaming skills. You can also get involved in our Esports Academy, putting your skills into practice in the British Esports Association Championships.

Apply Now!



Digital Production, Design and Development (Computer Game Development)

T Level | Study length: 2 years full time

This high-tech T Level course explores various elements of the digital and creative industries. The course has a strong emphasis on the exposure to emerging environments, such as cloud-based computing and gaming technologies. The primary focus is on developing computing skills which will be enhanced by using programming environments and hardware that reflect the developments required in using various platforms for solving business and gaming solutions.

Access to HE in Computer Games

Study length: 1 year full time

Harness your creative potential and fast-track to university. Ideal for people with industry experience looking for a career change or further learning, you'll choose to study a specialist subject in the creative industry and develop skills guided by experts who've worked in the field. You'll have access to our state-of-the-art industry-standard equipment and will learn critical thinking and writing in preparation for university. We have pathways for Access in Art & Design, Photography, Graphic Design & Illustration, Animation, Computer Game Design & Development.

Access to HE in Creative Media

Study length: 1 year full time

Access to HE in Creative Media is a fast-tracked, one-year course designed for adult learners seeking to develop specialist skills in the media industry. The program focuses on both technical and academic competencies necessary for further progression in higher education. As a student, you'll have the opportunity to utilise our state-of-the-art industry-standard equipment, enabling hands-on learning experiences. Moreover, you'll cultivate critical thinking and writing abilities, preparing you for success at the university level. This comprehensive course opens doors to various subjects, including film production, media studies, journalism, media production, digital media and related fields at higher education.

Media, Broadcast and Production

T Level | Study length: 2 years full time

This T Level in Media, Broadcast and Production will give you the practical skills and industry know-how you need for a career in the creative industries. You'll explore the different career paths available and learn how to use industry-standard software and equipment – including our state-of-the-art TV studio. A nine-week industry placement will give you the opportunity to put your skills into practice. You can progress to higher education or straight into employment with this T Level qualification.



Web design & development professionals
Average salary
£30,160*

Jobs are set to increase by
1,967 in the next 3 years.

*Taken from the Department for Education's Labour Market Information For All API – correct as of August 2023



School of Creative Arts

Visual Arts

The School of Creative Arts helps students unlock industry-standard skills, along with the experience needed for successful and creative careers. The Visual Arts department offers study across art and design, graphic design, textiles and photography. Our exciting sector links provide you with professional experience in your chosen subject area, supported by creative and hands-on learning in our industry-standard facilities.

Location: Quarry Hill Campus



Follow us on social: @CreativeartsLCC



Careers

Graphic Designer

From helping companies develop their brands to marketing and advertising, graphic designers are responsible for all visual imagery and designs.

You'll cover multiple projects at once and will need to be able to create a visual narrative. You'll work to specific client briefs and will need a strong understanding of Adobe software.

Graphic designer roles can vary – with some focusing heavily on digital graphics and others focusing on print – so it's useful to have a specialism in mind when choosing this career path.

Photographer

As a photographer, it will be your job to capture moments and stories through imagery. You'll have a keen eye for detail and will be confident with a camera.

In addition, you'll be able to use industry-standard photo-editing and manipulation software. You may choose to specialise in a specific area, such as bridal work, or you may use your photography skills to forge a creative career in a different sector, such as marketing.

Fashion Designers

Do you dream of seeing your designs on catwalks and high streets all over the world? As a fashion designer you'll use your creative flair and unique eye for detail to create all sorts of looks – from elaborate, striking pieces to comfortable, everyday fashion.

You'll learn how your imagination can benefit the role of a fashion designer. You'll also need to be able to work well in a team and understand current trends and how to produce fashion that meets the needs of the consumer.

As a fashion designer you'll be able to work collaboratively with people from all areas of the industry and be passionate about innovation in the world of design.

Other careers could include:

- Advertising Art Director
- Practising Artist
- Concept Artist
- Creative Director
- Illustrator
- Videographer
- Animator
- Digital Designer

Courses

Art and Design BTEC Diploma

Level 1 | Study length: 1 year full time

Create to your heart's content on this Art and Design course. Using drawing, painting, printmaking and sculpture, you'll construct striking artwork reflecting different themes and contexts. You'll develop key digital skills, learning how to utilise animation software, Adobe applications, and digital and photographic processes effectively. You'll also gain skills in traditional and digital art disciplines – opening up a world of opportunities for your future career.

Art and Design BTEC Diploma

Level 2 | Study length: 1 year full time

Understanding visual language is fundamental to all creative pathways, this course will provide you with a diverse range of visual art skills and techniques which will aid your progression into a wide range of creative subjects. This Art and Design course allows you to turn your creative spark into skills that become a rewarding career. You'll build your very own art portfolio, using it to showcase your designs and artistic flair as you deepen your knowledge. You'll study practical and theoretical topics, discovering traditional techniques such as printmaking, sculpture and textiles. You'll also explore various elements of media, using our industry links to open up exciting progression opportunities in digital art and design.



*Taken from the Department for Education's Labour Market Information For All API – correct as of August 2023

Visual Arts – Graphic Design

Level 2 | Study length: 1 year full time

Understanding visual language is fundamental to all creative pathways, this course will provide you with a diverse range of visual art skills and techniques which will aid your progression into a wide range of creative subjects. This course is a great introduction to the skills you'll need to progress to Level 3. You'll learn how to think creatively and develop imaginative concepts whilst building your investigative skills, communication skills, practical skills, developmental practices and an independent approach to working. You'll use a wide range of materials, techniques and processes, including industry-standard Adobe software, traditional art skills and photography.

“For me because I’ve got autism and I’d sometimes have trouble understanding things because I need stuff breaking down into detail and explaining to me in a perfect way, in a more understanding way, I have tutors that understand me a bit more.”

– Max, Photography student

Let's see!



Visual Arts – Photography

Level 2 | Study length: 1 year full time

Understanding visual language is fundamental to all creative pathways, this course will provide you with a diverse range of visual art skills and techniques which will aid your progression into a wide range of creative subjects. Master the art of visual storytelling with this fascinating Photography course. You'll learn how to capture and manipulate images, gathering a range of traditional and digital photography knowledge as you study. Using our professional studios, you'll work on briefs, develop your darkroom skills and learn how to use industry-standard software. Your professional portfolio, sharpened talent and industry experience will also be the perfect tools to set you on your career path.

Art and Design BTEC Extended Diploma

Level 3 | Study length: 2 years full time

(1-year Diploma and 1-year Extended Diploma)

Explore your artistic style and expression on this imaginative design course. You'll deepen your art knowledge as you continue to explore processes such as painting, drawing, sculpture and printmaking. You'll strengthen your creative skills and techniques, focusing on advancing your own personal practice and progression opportunities. You'll also work towards a final major project that will be showcased in the end of year exhibition.

Fashion and Textiles BTEC Extended Diploma

Level 3 | Study length: 2 years full time

(1-year Diploma and 1-year Extended Diploma)

You'll learn a range of skills on this practical course, including specialist textiles techniques and processes such as embroidery, print, fabric manipulation, dyeing and garment construction. Throughout your projects you'll build your investigative research skills, cognitive problem-solving, communication skills and technical abilities. You'll also create a professional portfolio to support your progression to a university course or career in the fashion and textiles industry.

Graphic Design BTEC Extended Diploma

Level 3 | Study length: 2 years full time

(1-year Diploma and 1-year Extended Diploma)

Equivalent to three A levels, this course is perfect for preparation for progression to university and graphic design job roles. You'll learn how to think creatively and develop imaginative ideas and concepts. You'll do this via a wide range of materials, techniques and processes, including industry-standard Adobe software, developing your talent for drawing and sketching, digital and traditional illustration, typographical design, layout design, traditional craft making, photography, animation and film. You'll also build your investigative research skills, cognitive problem-solving skills, communication skills, technical skills and professional practice with an independent approach to working.

Photography BTEC Extended Diploma

Level 3 | Study length: 2 years full time

(1-year Diploma and 1-year Extended Diploma)

Our Photography Level 3 course allows you to capture your creative vision. You'll take stunning photos in professional studios and will shoot at various locations in and around Leeds. You'll develop your knowledge of advanced camera techniques, understanding a range of digital and traditional processes, such as darkroom processing. From fashion shoots to documentary stills, you'll deliver a creative repertoire of work that meets client briefs and displays your personal development.



Access to HE Art & Design

Study length: 1 year full time

Preparing you for studying an art or design course at university, this course will develop your specialist techniques and critical thinking skills, whilst nurturing your own practice in a supportive environment. Your professional practice will be developed via project-based activities within a studio setting and online learning, and culminates in a final major project that will be marketed, promoted and exhibited in a professional gallery setting.

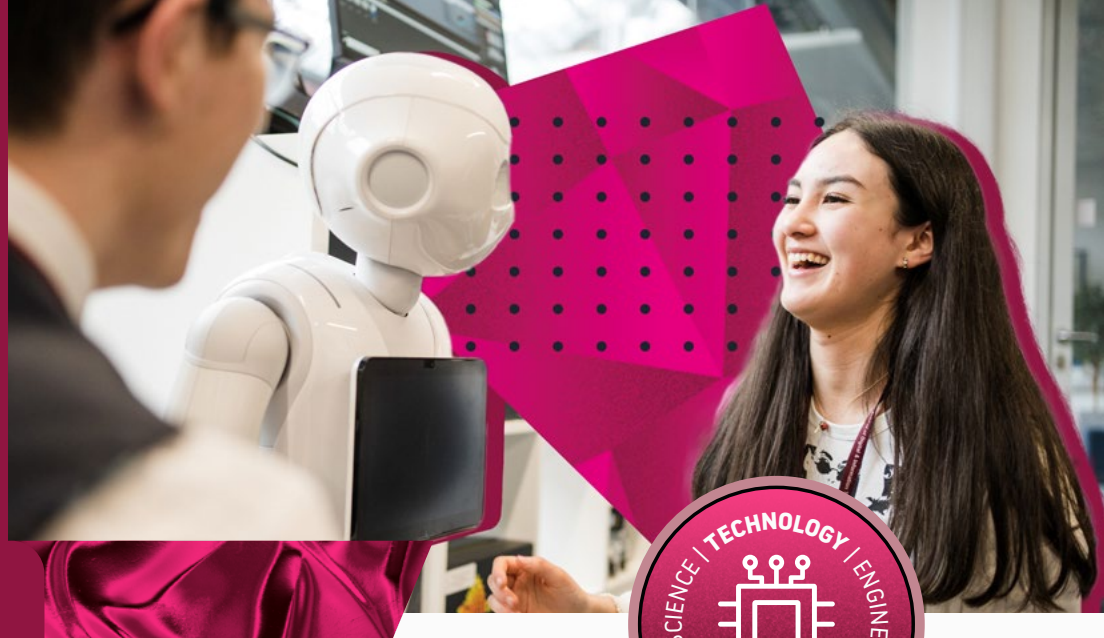
Access to HE Graphic Design & Illustration

Study length: 1 year full time

Ideal for those who want to study graphic design or illustration at university, this course will give you access to workshops where you can learn new creative digital design skills utilising Apple Mac and Adobe software, along with more traditional creative art techniques and processes. You'll explore your creative ideas, build a portfolio and exhibit your work.



*Taken from the Department for Education's Labour Market Information For All API – correct as of August 2023



School of Digital & IT

The School of Digital & IT will equip you with the knowledge to enter one of the most in-demand and evolving industries. From behind-the-scenes app and website programming to database administration, the School offers an extensive range of computer skills to help further your journey in education or employment, in a multitude of sectors.

Location: Printworks Campus



Follow us on social: @LCCDigitalandIT



Careers

Programmer/Software Developer

Programmers and software developers are the backbone of any sector with a digital footprint, creating software from start to finish. You'll need to design, develop, test, implement and maintain different software systems and will work directly on client briefs to design specialist software.

Being responsive, reactive and a logical thinker is key. You'll also have a solid understanding of programming languages and will be able to concentrate for long periods.

Web Designer

You're the bridge between programming and client vision, working on designing, developing and maintaining stylish and functional websites. Web designers are often freelance, in-house or positioned at an agency to multitask over multiple clients.

You'll be used to working with clients who may not have strong technical knowledge, and you'll use your expertise and knowledge of programming languages to make their business objectives a reality.

Network Engineer

Network engineers have the essential role of maintaining, supporting and developing internal and wider communication networks – either in-house or between organisations. An advanced level of computer literacy and a solid grounding in computing, particularly within the specialised branch of networking, is vital. Network engineers can also translate technical language into layman's terms and offer guidance to colleagues, users, clients and suppliers.

Other careers could include:

- Software Development Technician
- Application Developer
- Mobile App Developer
- Software Developer
- Application Support Analyst
- Assistant Programmer
- Automated Test Developer



*Taken from the Department for Education's Labour Market Information For All API – correct as of August 2023

Courses

Coding, Multimedia, Robotics & Web Development BTEC Diploma in Vocational Studies

Level 1 | Study length: 1 year full time

Enter the field of digital and IT with this dynamic programme that covers all the essentials. You'll gain technical knowledge by using digital communication technologies, create computer programmes, animation and websites, and will develop your own digital product. Through the use of spreadsheets you'll also build your problem-solving, planning and IT organisational skills.

Web, Graphics & Multimedia Development BTEC Diploma in ICT

Level 2 | Study length: 1 year full time

Expand and refine your digital and IT knowledge with this practical course. You'll study computer-focused topics, such as the online world and technology systems. Additionally, you'll explore potential specialist areas, with optional topics including digital animation, website development and digital graphics. All whilst crafting a digital portfolio to showcase your work.

Access to HE Computing

Level 3 | Study length: 36 weeks

This course equips you with the knowledge and practical skills relating to computer science. Upon successful completion of this course you'll be able to progress to our Applied Computing Foundation Degree or Cyber Security and Networking Degree.

Access courses are an alternative route to get into university if you don't meet the entry requirements. Please check the requirements of your chosen course to make sure this qualification is appropriate. This course is offered either on a part-time or full-time basis.

Mobile Apps, VR & Robotics Development P-TECH Extended Certificate in Computer Science

Level 3 | Study length: 1 year full time

Fusing IT knowledge, logic and business, this dynamic course will prepare you for a professional industry role. You'll learn about IT systems' security and encryption, mobile applications development and human-computer interaction. You'll also work on your own software design and development project, as well as the business applications of social media. This course has been designed with tech giant IBM and focuses on industry links including the opportunity of a six-week internship with IBM at the end of year 1.

Software, Cyber Security & Network Engineering BTEC Foundation Diploma in Computer Science

Level 3 | Study length: 1 year full time

Prepare for a career in computing and learn how to design and develop software, use programming languages such as C#, CSS, PHP and JavaScript, and access industry-standard facilities. In addition, you'll gain an understanding of computer system fundamentals, principles and human-computer interaction. You'll also study IT security and encryption.



3D Modelling, Web & Social Media Development BTEC Extended Certificate in IT

Level 3 | Study length: 1 year full time

From learning how to create IT systems for information management to leveraging business-led social media skills, you'll be immersed in the industry and will gain insight into an exciting career. Additionally, you'll also design and create your own website, whilst identifying progression opportunities that align with your goals.

3D Modelling, Web & Social Media Development BTEC Foundation Diploma in IT

Level 3 | Study length: 1 year full time

Get a taste for a role in IT with this course tailored to industry demand. You'll learn how to create systems that can effectively store and manage information, whilst expanding your skills and critical thinking when it comes to programming, data modelling and how they support database management systems.

Cyber Security, Digital Infrastructure and Emerging Technologies NCFE T Level Digital Support Services

Level 3 | Study length: 2 years full time

Get ready to enter the world of cyber security, digital infrastructure and emerging technologies! An exciting and innovative technical qualification, this T Level course has been designed by employers and industry stakeholders. You'll explore the world of computer science and IT theoretically and practically, putting your new knowledge into practice with invaluable industry placements – all giving you the edge for the future.



*Taken from the Department for Education's Labour Market Information For All API – correct as of August 2023

Software, Cyber Security & Network Engineering Pearson T Level Digital Production, Design & Development

Level 3 | Study length: 2 years full time

Do you want a career as a software developer, mobile app developer, web designer/developer, programmer or automated test developer? Created by companies such as BBC, BT, Cisco, CompTIA, Nationwide and Siemens, this exciting technical qualification is geared up to teach you what employers want. It will fully immerse you in industry-informed live and simulated projects, giving you the flexibility to learn how to manage projects and develop skills around software development. Theoretical learning is enhanced with industry placements, giving you the edge in employability skills.

Apprenticeships

The department offers the following apprenticeships:

- Level 3 IT Technical Salesperson
- Level 3 Digital Marketer
- Level 3 IT Solutions
- Level 3 Digital Support Technician Applications
- Level 3 Information Communication Technician
- Level 4 Data Analyst

Please contact the Apprenticeship team to discuss your opportunities.



For more information on apprenticeships:

leedscitycollege.ac.uk/apprenticeships

0113 284 6464

apprenticeships@leedscitycollege.ac.uk



School of Engineering

Equipping the next generation of engineers with practical skills, the School of Engineering is split into two specialisms. The Automotive department allows students to gain mechanical experience whilst learning how to restore cars, carry out paint repairs and understand light vehicle fitting properties. Students of engineering will learn how to excel in mechanical, electrical, electronic and manufacturing engineering, acquiring valuable skills such as fabrication and welding.

Location: Printworks Campus



Follow us on social: @EngineeringLCC



Careers

Light Vehicle Technician

As a vehicle technician, you'll repair and service the mechanical and electrical components of light vehicles. You'll need a solid understanding of automotive systems, vehicle regulations and law, and mechanical and electrical engineering in an automotive context. You'll inspect vehicles, diagnose faults, provide service recommendations, and rectify faults and issues.

Maintenance or Welding or Mechanical Engineer

As an engineer, you'll work on everything from small component designs, to aeronautical and large vehicles, medical, domestic products and more. You'll need strong technical knowledge and will be able to apply this to practical contexts. You'll also need good communication skills, strong IT skills, a good team ethic and the ability to work under pressure.

Vehicle Paint Technician

If you enjoy cosmetically enhancing cars, then you may enjoy a career as a vehicle paint technician. You'll use professional spray equipment to apply paint and decorative materials, such as wraps or decals, to the bodywork of motor vehicles. You'll have a solid understanding of the different parts of a car, as well as the knowledge to maintain health and safety in the workshop.

Other careers could include:

- Electrical Engineer
- Electronic Engineer
- Manufacturing Engineer
- Operations Manager
- Mechanic
- Automotive Engineer
- Systems Engineer
- Fabricator Welder
- Electrician



*Taken from the Department for Education's Labour Market Information For All API – correct as of August 2023

Courses

Engineering/Motor Vehicle Carousel EAL Diploma

Level 1 | Study length: 1 year full time

Develop the skills needed to start an engineering career. You'll learn the difference between mechanical and electrical engineering, sharpen your maths skills, and acquire practical experience of welding and fabrication in our state-of-the-art workshops and garages.

Introduction to Engineering BTEC Diploma

Level 1 | Study length: 1 year full time

This introductory course will help you gain the transferable skills needed to progress in your engineering career. Explore multiple aspects of engineering processes such as turning, milling, bench fitting and electrical circuitry. You'll create products in the workshop using industry-standard tools and equipment, and will be taught how to safely operate these.

ABC Diploma in Motor Vehicle Studies

Level 1 | Study length: 1 year full time

Learn how to restore motor vehicles to their former glory with this Level 1 Diploma. You'll conduct inspections, advising customers on the work needed such as paint refinishing, valeting and body repair. You'll also expand your knowledge of battery, lighting, braking and exhaust systems – introducing you to the world of light vehicle maintenance.

Electrical Installation (Building and Structures) City & Guilds Diploma

Level 2 | Study length: 1 year full time

Take the first steps to becoming an electrician by gaining the practical skills and theoretical knowledge required by the electrical installation trade. You'll acquire knowledge of electrical principles and installation, as well as ensuring your health and safety knowledge is up to date before experiencing practical workshops in our bespoke facilities.

EAL Diploma in Engineering – Machinist Pathway

Level 2 | Study length: 1 year full time

Do you want to find an apprenticeship as a computer numerically controlled (CNC) engineer, design engineer or progress on to T Level courses? If so, this Level 2 course is for you. You'll learn CNC turning and milling techniques, gain hands-on mechanical design and machining skills, and learn about computer aided drawing. Careers in engineering can be well-paid and rewarding, with lots of scope for progression and travel.



* Taken from the Department for Education's Labour Market Information For All API – correct as of August 2023

EAL Diploma in Engineering – Maintenance Pathway

Level 2 | Study length: 1 year full time

Ideal for those who want a career in engineering but who want to learn in a practical, hands-on way, this Level 2 Diploma can help you progress to an apprenticeship as a maintenance or service engineer. Designed to help you develop your electrical and mechanical engineering skills, you'll study modules such as engineering techniques, and engineering mathematics and principles.

EAL Diploma in Engineering – Welding Pathway

Level 2 | Study length: 1 year full time

Designed to help you develop your fabrication and welding skills, this Level 2 Diploma will help you secure an apprenticeship or progress on to T Levels. Helping you gain practical hands-on skills that will back up your engineering knowledge, we'll help you work towards specialising in fabrication and welding principles, manual welding techniques, producing components from sheet metal, or thermal cutting techniques.

“The tutors here are really interactive and are always there whenever you need something. We don’t call them Sir or Miss or use second names – we call them by their first names which helps create a relaxed and friendly communication between tutors and students.”

– Harry, BTEC Engineering student

Let's see!



Light Vehicle Fitting Principles ABC Certificate in Motor Vehicle

Level 2 | Study length: 1 year full time

A combination of theoretical knowledge and practical skills, you'll learn how to perform basic diagnostic tests to identify faults, then advise on the work needed to correct them. Over the duration of the programme, you'll compile a portfolio of work which will enable you to undertake a motor vehicle apprenticeship or gain fast-fit-related work.

Light Vehicle Maintenance and Repair Principles ABC Diploma in Motor Vehicle

Level 2 | Study length: 1 year full time

Give vehicles a new lease of life with this course. Alongside developing knowledge of engine, transmission, chassis and vehicle electrical systems, you'll gain an awareness of health and safety in an automotive environment. You'll also learn how to use tools, equipment and materials to maintain and repair vehicles.

Engineering EAL Diploma

Level 3 | Study length: 1 year full time

Designed to expand your engineering knowledge, you'll develop your skills in the mechanical sector by using relevant machines, as well as learning how to apply mechanical or electrical principles to your work. You'll strengthen your knowledge of health and safety, and will be able to use our bespoke workshops and garages to gain practical experience.

Engineering Academic Route BTEC Foundation/Extended Diploma

**Level 3 | Study length: 2 years full time (1-year
Diploma and 1-year Extended Certificate)**

Build advanced skills with this programme which will teach you how to design and manufacture products in an engineering context. You'll learn how to use technology for computer-aided design (CAD), and will also cover electrical circuits, including how to safely test them. The Extended Diploma will teach you how to weld and understand programmable logic controllers.

Fabrication and Welding Engineering Technology EAL Diploma

Level 3 | Study length: 1 year full time

Excel in your engineering with this course. You'll study pattern development, the creation of drawings and management of fabrication activities. You'll also study optional units such as plate work, metal inert gas (MIG) welding, tungsten inert gas (TIG) welding, manual metal arc (MMA) welding, pattern development and managing fabrication activities.

Light Vehicle Maintenance and Repair Principles IMI Diploma

Level 3 | Study length: 1 year full time

Test, diagnose and rectify faults in light vehicles with our practical programme. You'll gain skills and knowledge of diagnosing and rectifying electrical, engine, transmission, driveline and chassis system faults affecting light vehicles. You'll also explore health and safety alongside being taught how to use industry-standard tools, equipment and materials.

Mechanical Engineering EAL Diploma (19+ only)

Level 3 | Study length: 6 months or 1 year full time

For those looking to take the next steps towards a career in mechanical engineering, this course will provide you with the academic knowledge and the practical skills you need. Studying in our bespoke facilities, you'll gain an understanding of milling, turning, CNC, CAD, mechanical principles and an in-depth knowledge of different materials.

Electrical Engineering Diploma (19+ only)

Level 3 | Study length: 6 months or 1 year full time

Perfect for those who want to increase their workshop skills, this hands-on course will combine theoretical knowledge with practical skills to help you prepare for progression in your chosen career. As well as making use of our industry links and bespoke workshops, you'll expand your knowledge of electrical principles, circuits and electronics in this brand-new course.

Engineering, Fabrication and Welding Diploma (19+ only)

Level 3 | Study length: 6 months or 1 year full time

Ideal for those who want to progress to higher education or further study, this hands-on course is a great way to boost your confidence as well as your workshop experience. You'll study the theory and practical aspects of MIG, TIG, CAD and welding principles in our state-of-the-art facilities, and will be able to take advantage of our industry contacts to further your progression in your career.

CAD for Engineers Introductory (part-time)

Level 2 | Study length: 10 weeks

Learn how to create CAD items with this practical course. Designed to develop your CAD skills, it's suitable for both beginners and intermediate learners, and is ideal for those looking to take the next step in their career. You'll use industry software, Solid Works, to develop a range of skills.

Engineering CNC (part-time)

Study length: 10 weeks

Designed to develop your skills in CNC, this 10-week programme can be tailored to your individual skill level whether you're a beginner or intermediate. Ideal for upskilling and career development, you'll learn CNC programming and design in order to create interesting objects, either for fun or to enhance your skill set for employment.

Vehicle Paint Refinishing IMI Diploma (part-time)

Level 1 | Study length: 34 weeks full time

Combining practical experience with theoretical knowledge, we'll help you gain all the skills you need to prepare you for an apprenticeship. During hands-on lessons in our bespoke workshops and garages, you'll learn skills such as preparation of vehicle body panels, masking techniques and application of paint materials by spray.

Introduction to Motor Vehicle Industry and Technologies Certificate (19+ only)

Level 3 | Study length: 34 weeks full time

Start your career in the motor vehicle industry with this introductory course. You'll gain an understanding of different vehicle systems such as braking, wheels and tyres, and liquid cooling systems. You'll also explore cosmetic services such as valeting and basic body repair, as well as how you can maintain health and safety in the automotive environment.

Engineering and Manufacturing (Manufacturing, Processing and Control)

T Level | Study length: 2 years full time

If you want a career in engineering, this qualification is for you. Over the two-year course, you'll gain an understanding of what skills are needed to specialise in the engineering industry. You'll study topics such as processes of production and manufacturing, materials, specialist machinery, product and project management, quality assurance and quality control. You'll also benefit from a work placement.

This course is equivalent to three A levels.

Telecommunications engineers

Average salary

£40,560*



* Taken from the Department for Education's Labour Market Information For All API – correct as of August 2023

Engineering and Manufacturing (Maintenance, Installation & Repair)

T Level | Study length: 2 years full time

Extending both your theoretical and practical skills in mechatronics, this course is ideal for those wanting to develop a career in engineering, or to progress to higher apprenticeships or university. You'll cover topics such as maintenance, installation and repair requirements, fault detection and diagnosis, isolation and resolution methods, and communication for maintenance. You'll then put all your theory into practice with a work placement.

Engineering and Manufacturing (Design and Development for Engineering Manufacturing)

T Level | Study length: 2 years full time

Gain an understanding of what it's like to work in the engineering industry with this specialist course. Alongside deepening your knowledge of mechanical, electrical and electronic engineering, you'll also learn about principles of design, design processes and communication of design. You'll gain a practical understanding of how to collate customer and client requirements, and will benefit from a minimum of 45 days' work experience.



*Taken from the Department for Education's Labour Market Information For All API – correct as of August 2023



Apprenticeships

The department offers the following apprenticeships:

- Engineering Operative – Fabrication and Welding
- Metal Fabricator
- Engineering Fitter
- Maintenance and Operations Engineering Technician
- Engineering Technician – Machinist
- Technical Support Technician
- Auto Care Technician
- Automotive Vehicle Service & Maintenance Technician (Light Vehicle)
- Vehicle Damage Paint Technician
- Vehicle Damage Panel Technician
- Vehicle Damage Mechanical, Electrical and Trim (MET) Technician

Please contact the Apprenticeship team to discuss your opportunities.

For more information on apprenticeships:



leedscitycollege.ac.uk/apprenticeships



0113 284 6464



apprenticeships@leedscitycollege.ac.uk



School of Events, Enterprise & Employability

The School of Events, Enterprise & Employability allows students to identify and realise their aspirations, by introducing them to a broad spectrum of events and enterprise-focused disciplines that enhance their skills. Each course includes employability elements to prepare students for their next steps.

Location: Mabgate Campus



Follow us on social: @LCC_EventsEnterpriseEmploy



Careers

Events Manager

Are you ready to run exciting events from start to finish? Events managers are responsible for planning, organising and running business and social events.

You'll need to be outgoing, self-motivated and, as the job is very practical, you'll also need to be strong at working well with a team to coordinate aspects of the event.

You may choose to work across a range of events for one organisation, or you may choose to specialise in certain types, such as fundraising or music festivals.

Project Manager

If you've a keen eye for detail, strong organisational skills and the confidence to manage people, a career in project management could be for you.

A project manager is responsible for delivering projects on time and within budget. Project managers need to be skilled at planning and organising resources and people.

You can work in a variety of areas such as construction, engineering, IT and marketing. Experience of managing resources, costs and people will help you get into this role.

Marketing Manager

Fancy leading a passionate team that produces clever campaigns, memorable brands and exciting events?

Marketing managers create marketing strategies for clients that meet a range of objectives. From promoting products and generating revenue, to spotting gaps in the market and analysing customer data – these creative professionals are responsible for it all.

To be a successful marketing manager, you'll need a solid understanding of marketing, strong communication skills, and proven creative and leadership skills.

Other careers could include:

- Events Officer
- Events and Marketing Manager
- Receptions Supervisor
- Front of House Staff
- Call Centre Manager
- Customer Services Director
- Business Development Manager
- Operations Manager

Courses

Customer Service NCFE Certificate

Level 1 | Study length: 1 year full time

Are you a 'people person' who longs to make an impact in a customer-facing role? This Certificate in Customer Service will develop your skills and knowledge, improve your communication and provide you with practical, professional experience. You'll be introduced to a range of topics, such as 'working with others', 'customer service communication', and 'meeting and welcoming visitors'. This course is an ideal way to establish useful customer service skills for various employers and industries.

Creative Craft: Upcycling

Level 1 | Study length: 1 year full time

Are you interested in creative upcycling linked to joinery, textiles, painting and design? This course will help you to develop your creative skills. You'll have the opportunity to work on a range of creative upcycling projects in a fully fitted out workshop. This one-year course will enable you to plan and produce a final upcycled item for your portfolio.

Personal and Social Development NCFE Award

Level 1 | Study length: 1 year full time

Gain new skills and use them to create your 'best self' with this career-focused course. It focuses on identifying your strengths and areas of improvement, developing your skills and setting achievable goals for you to work towards as you take the next steps to further study. You'll participate in practical projects, carry out voluntary work and improve your social skills using group activities and discussions. By the end of this course you'll have created a portfolio of achievements and acquired a range of professional, personal and transferable skills.

Business Enterprise BTEC Technical Certificate

Level 2 | Study length: 1 year full time

Develop the knowledge and understanding needed to enter the business and enterprise industry with this dynamic course. By balancing practical learning with fundamental knowledge, you'll experience running an enterprise project whilst gaining employability skills that support your progression.

Customer Service NCFE Certificate

Level 2 | Study length: 1 year full time

Put your customer service skills into practice by participating in live events and interacting with different types of customers. Designed for those who want to learn more about the art of customer service and fine-tune their skills, you'll learn useful techniques that'll heighten your effectiveness and increase your employability – preparing you for the fast-paced world of customer service.

Marketing associate professionals

Average salary

£33,800*

Jobs are set to increase by
6,352 in the next 3 years.



**Make it
happen!**

*Taken from the Department for Education's Labour Market Information For All API – correct as of August 2023

Employability and Enterprise NCFE Award

Level 2 | Study length: 1 year full time

Expand your enterprise and employability skills through a range of vocational activities. Whether you want to progress to further study or employment, this course enables you to gain real experience by working on projects and volunteering in your chosen area. You'll have access to expert careers advice and various skills-building opportunities, including business events and start-ups, and will gain a recognised qualification at the end of the course.

Event Planning NCFE Certificate

Level 2 | Study length: 1 year full time

Take your event-planning skills to the next level and train on the job with this hands-on qualification. You'll look at all aspects of organising, running and marketing for commercial events – including the opportunity to put your skills to the test with some real-life event management. You'll also polish your planning skills, learn how to evaluate and review an event, and expand your knowledge of market research and marketing methods in event planning.

Creative Craft – Upcycling

Level 2 | Study length: 1 year full time

Do you want to get hands-on experience of the creative enterprise industry and develop your workshop techniques in a sustainable way? Designed to mirror a real-life workplace, you'll plan and prepare the tools, materials and equipment needed to repurpose your final upcycled item in our state-of-the-art workshop. You'll also gain enterprise and employability skills to prepare you for your next steps on this exciting course.

Business and Enterprise

Level 3 | Study length: 1 year full time

Take the next step into entrepreneurship or a career in the industry with this course. Giving you the scope to develop and refine your understanding of enterprise, you'll have opportunities to run your own business, gain a specialised work placement to expand your CV and gain up to 56 UCAS points to progress to university if desired.

Business, Innovation, Sustainability and Growth

Level 3 | Study length: 1 year full time

Increase your employability skills and get practical experience of businesses with this hands-on course. You'll learn how to increase the productivity and effectiveness of your operations, and how to increase the potential for sustainability and growth of your business. A work placement will help build your CV, and you'll also achieve a Business Innovation, Sustainability and Growth SFEDI Certificate.

Creative Craft – Upcycling & Creative Commercial Development

Level 3 | Study length: 1 year full time

Take your creative upcycling skills to the next level. This course focuses on your innovation, critical evaluation and communication through exploring commercial upcycling craft briefs linked to a range of creative techniques. You'll produce an upcycled product or project in response to a commercial brief which will allow you to develop your knowledge of sustainability and the circular economy.

Extended Project Qualification

Level 3 | Study length: 1 year full time

Be in demand with a top qualification that every business needs. You'll delve into core project management processes and discover how to apply them across different business settings. You'll boost your business confidence through class presentations and strengthen your practical skills in live employer projects where you'll run a project from start to finish.

Marketing BTEC Extended Certificate

Level 3 | Study length: 1 year full time

Be brand savvy and shape the future of the industry with a qualification in marketing. You'll learn campaign planning and implementation, customer communications for both general and specific audience segments, and essential marketing principles – equipping you for success in an industry where career paths are endless.

Apprenticeships

The department offers the following apprenticeships:

- Events Assistant
- Associate Project Management
- Marketing Assistant
- Marketing Executive
- Community Health and Wellbeing Worker
- Youth Worker
- Corporate Social Responsibility & Sustainability Practitioner

Please contact the Apprenticeship team to discuss your opportunities.



For more information on apprenticeships:



leedscitycollege.ac.uk/apprenticeships



0113 284 6464



apprenticeships@leedscitycollege.ac.uk



*Taken from the Department for Education's Labour Market Information For All API – correct as of August 2023



* Glow up *

School of Hair, Beauty & Media Makeup

Begin your journey in the creative world of hairdressing, beauty therapy and media makeup. Combining creativity, industry understanding, practical experience and communication skills, you'll be ready to enter the industry and make your mark as a qualified expert with hands-on experience. Courses range from hairdressing, barbering and beauty therapy treatment to makeup for fashion and theatre.

Location: Printworks Campus



Follow us on social: @LCCHairBeautyMediaMakeup



Careers

Creative Hairstylist

Using creativity and imagination to meet a client's brief, a creative hairstylist brings ideas to life through hair.

Ambition and passion are key, while interpersonal skills, professionalism and an understanding of current trends and techniques will secure your place in the industry.

Creative hairstylists need a high level of cutting, styling and colouring knowledge that can be practically applied in commercial contexts.

Makeup Artist (MUA)

The role of a makeup artist is often freelance or in-house with a brand – with the purpose to enhance a person's features in a way that meets various client needs.

From weddings to the fashion industry, it's essential to have strong client communication skills and interpret personal briefs through professional techniques and beauty.

You'll also experiment with and contextualise both historical and current trends through makeup.

Beauty Therapist

Beauty therapists carry out treatments to ensure their clients look and feel good. In this role, you'll apply professional knowledge, an understanding of current trends and your connection with people and beauty to provide treatments that enhance client wellbeing, confidence and appearance.

You'll be capable of a variety of beauty treatments, be able to consult and make recommendations based on client needs, and know the current best practice.

Other careers could include:

- Hairdresser/Barber
- Colour Technician
- Theatrical Makeup Artist
- Wig Technician
- Hair Removal Specialist
- Skin Rejuvenation Specialist
- Salon and Spa Manager
- Beauty Assessor/Teacher
- Aesthetics Skin Therapist

Courses

Hair and Beauty Diploma

Level 1 | Study length: 36 weeks full time

Designed to give you a solid foundation for further study in the hair and beauty sector, this Level 1 Diploma is available in a choice of three pathways: hairdressing, beauty or media makeup. Once you've selected your specialism, you'll be introduced to the theory, as well as getting creative with hands-on practical assessments to boost your skills and confidence. This Diploma is perfect for those who want to progress to Level 2 study.

Please note it's a requirement of the professional standard that you're expected to wear a uniform.

Barbering Studies VTCT Diploma

Level 2 | Study length: 34 weeks full time

Prepare for a career in the industry by learning specialist barbering skills. Focusing on the essentials of men's grooming, you'll learn shampoo, conditioning and colouring, cutting men's hair and trimming facial hair in a commercial environment. You'll also strengthen your customer service skills and create an image based on fashion trends and client requests.

Please note it's a requirement of the professional standard that you're expected to wear a uniform.

Beauty Therapy Studies VTCT Diploma

Level 2 | Study length: 34 weeks full time

Begin a journey of client transformation and care with this technical course. Based in our stunning professional salons, you'll provide services to clients such as eyebrow shaping, makeup application, and eyelash and eyebrow tinting. You'll also learn how to analyse skin types, provide facials and waxing services, and understand anatomy and physiology in a beauty therapy context.

This qualification consists of two written exams and one final synoptic exam.

This qualification has been developed collaboratively with employers, professional associations and key stakeholders in the beauty therapy sector. The knowledge, skills and competencies gained will provide the best possible opportunity for progression into employment.

Please note it's a requirement of the professional standard that you're expected to wear a uniform.

Beauty Therapy Studies VTCT Diploma

Level 2 | Study length: 34 weeks full time

Step into a professional salon with our Beauty Therapy Studies programme. Set in one of our commercial-grade spaces, you'll cover facial skincare and manual facials, including cleansing, facial massage and mask application. You'll also learn how to remove hair, create nail art to professional standards, and provide manicure and pedicure treatments on external clients.

The VTCT Level 2 Diploma in Beauty Therapy is a substantial vocational qualification for learners seeking a career as a junior beauty therapist.

Please note it's a requirement of the professional standard that you're expected to wear a uniform.

Hair and Media Makeup VTCT Diploma

Level 2 | Study length: 34 weeks full time

Let your imagination run wild with this innovative course. You'll work alongside a professional photographer to build up an industry-ready portfolio of work. In addition to this, you'll explore the application of makeup in different contexts, ranging from day and evening to bridal makeup. You'll also learn how to apply body paint, mehndi and media makeup.

Please note it's a requirement of the professional standard that you're expected to wear a uniform.



*Taken from the Department for Education's Labour Market Information For All API – correct as of August 2023

Hairdressing VTCT Diploma

Level 2 | Study length: 34 weeks full time

Style your way to success with this hairdressing qualification. Preparing you for a gratifying career, you'll perfect styling techniques such as blow-drying, colouring, cutting and lightening, alongside setting and styling hair to a professional standard. Helping you gain a well-rounded understanding of ladies' hairdressing, you'll also refine your client consultation skills and deepen your understanding of scalp and haircare.

Please note it's a requirement of the professional standard that you're expected to wear a uniform.

Barbering VTCT NVQ Diploma

Level 3 | Study length: 36 weeks full time

Take your barbering skills to the next level with this NVQ Diploma. Giving you the skills you need to pursue your dream as an employed or self-employed barber, this advanced qualification is based on barbering National Occupational Standards (NOS), which will give you a great introduction to the industry. The UK's lead barbering association (British Barbering Association) also recognises this course as being a good preparation for a career as a senior barber.

Please note it's a requirement of the professional standard that you're expected to wear a uniform.

Beauty Therapy Treatments VTCT Diploma

Level 3 | Study length: 34 weeks full time

Give your beauty therapy knowledge a level up with our Beauty Therapy Treatments course. With a focus on client care and communication, you'll study body massage and microdermabrasion, perfecting your technique in both. You'll also learn how to provide facial and body electrotherapy treatments, using industry-standard equipment in our professional salons.

Please note it's a requirement of the professional standard that you're expected to wear a uniform. You'll need to already have Level 2 Beauty Therapy to enrol on this course.

Hairdressing VTCT Diploma

Level 3 | Study length: 1 year full time

Cut, colour, dress and style hair with this advanced programme. Preparing you for the salon, you'll learn hairdressing techniques such as colour correcting and cutting. You'll explore up-to-date hairdressing trends, refining your practical styling and haircare knowledge in the process. You'll also create a personal portfolio that showcases your hairdressing skills.

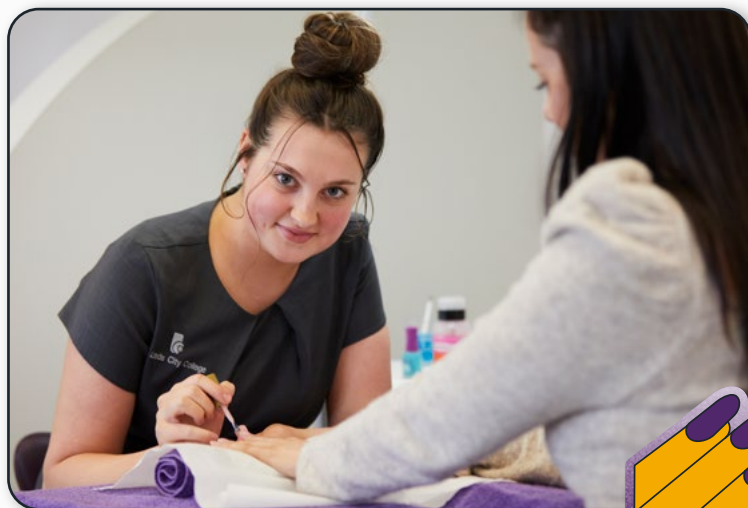
Please note it's a requirement of the professional standard that you're expected to wear a uniform.

Hairdressing VTCT Technical Certificate

Level 3 | Study length: 1 year full time

Develop your hairdressing skills with this Level 3 course that will enable you to become a State Registered Hairdresser with the Hair Council. You'll learn how to understand and consult with your clients so you can cut, colour, set, dress and finish their hair while feeling confident that you've met their needs. You'll also boost your industry awareness whilst learning problem-solving and research skills.

Please note it's a requirement of the professional standard that you're expected to wear a uniform.



Theatrical, Special Effects and Hair and Media Makeup VTCT Diploma

Level 3 | Study length: 34 weeks full time

Turn up the drama with this creative course. Working towards your dream career, you'll learn specialist techniques such as fashion photographic makeup, camouflaging, special effects makeup, prosthetics and wigs. You'll create intricate wig work and makeup, using brands such as Mac Cosmetics, Kryolan and Ben Nye to bring your looks to life. You'll also work on productions and complete a work placement in a theatre – all whilst building a professional portfolio.

Please note it's a requirement of the professional standard that you're expected to wear a uniform.

Permanent Hair Removal and Skin Rejuvenation VTCT Diploma

Level 4 | Study length: 34 weeks part-time

Revitalise, renew and refresh your clients with this technical programme that prepares you for careers in aesthetics clinics. With a focus on salon management and client care, you'll learn advanced epilation along with intense pulsed light (IPL) applications. You'll also gain a deep understanding of hair removal and skin rejuvenation, and will strengthen your commercial skills.

Please note it's a requirement of the professional standard that you're expected to wear a uniform. This course is designed for learners who wish to pursue a career as an employed or self-employed advanced beauty therapist.

Apprenticeships

The department offers the following apprenticeships:

- Hair Professional – both hairdressing and barbering
- Advanced and Creative Hair Professional
- Beauty Therapist
- Advanced Beauty Therapist

Please contact the Apprenticeship team to discuss your opportunities.

For more information on apprenticeships:



leedscitycollege.ac.uk/apprenticeships



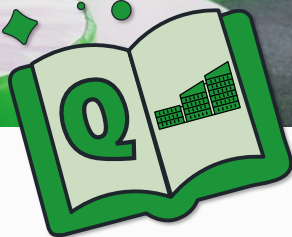
0113 284 6464



apprenticeships@leedscitycollege.ac.uk



*Taken from the Department for Education's Labour Market Information For All API – correct as of August 2023



School of Social Science

Education & Childcare

Our education and early years courses are taught by experienced professionals with industry knowledge in play, learning, development and education.

You'll combine theoretical and practical learning with workshops, talks and work placements to provide you with essential skills and experience. Our partnership with NCFE CACHE allows us to deliver high-quality qualifications.

Location: Quarry Hill Campus



Follow us on social: @EducationChildcareLCC



Careers

Early Years Assistant Practitioner

As a nursery assistant you'll help care for children up to the age of five in a private nursery, alongside a childminder or in a nursery class within a school. You'll have a good understanding of health and safety, and your patience, compassion and strong understanding of children's development will help you play a vital role in children's learning journeys.

Early Years Practitioner (Early Years Educator)

In this role, you'll work with children up to the age of five in a variety of settings. You'll observe, plan and support their learning, working with staff to meet the needs of the children and their families. Your patient and engaging nature will enable you to get the most out of children, whilst encouraging their natural curiosity.

Teaching Assistant

Do you dream of supporting the next generation of learners? As a teaching assistant you'll use your great communication and organisational skills to support teachers with the preparation and delivery of learning activities. Your support and encouragement will boost children's confidence and help them to achieve their best.

Other careers could include:

- Family Support Worker
- Learning Mentor
- Teacher
- Nursery Manager
- Youth Worker
- Nanny
- Playgroup Assistant
- Childminder



*Taken from the Department for Education's Labour Market Information For All API – correct as of August 2023

Courses

NCFE CACHE Award in Caring for Children

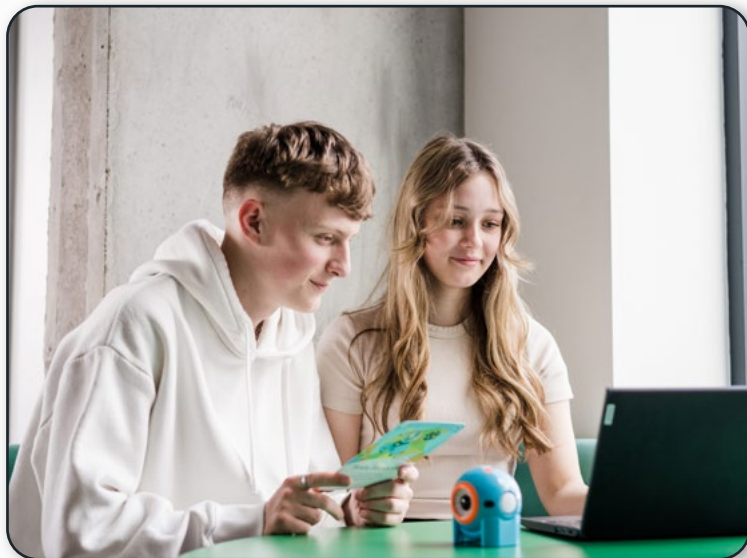
Level 1 | Study length: 1 year full time

Nurture the next generation with our introductory Caring for Children programme. This course allows you to take the first step when it comes to working with children or young people. You'll also have the opportunity to undertake a work placement where you'll develop vital skills in areas such as child development, care, play and healthy eating.

NCFE CACHE Diploma for Early Years Practitioner

Level 2 | Study length: 1 year full time

Designed to increase your knowledge and skills in working with children under seven years of age, you'll learn how to support children's development, care routines, and children with special educational needs and disabilities. You'll complete a placement alongside your studies which will give you a great opportunity to learn practical skills.



NCFE CACHE Certificate in Supporting Teaching and Learning

Level 2 | Study length: 1 year full time

Helping you follow your dreams of working in primary, secondary or further education, this programme will teach you how to promote a healthy, safe and supportive working environment, as well as how to use positive behaviour techniques. Practical experience will be gained through a placement which you'll attend two days a week.

NCFE CACHE T Level Technical Qualification in Education and Early Years

Level 3 | Study length: 2 years full time

Qualify for a career working with children in the childcare or education sector. This exciting vocational course is equivalent to three A levels and has a mixture of classroom learning and work placement. You'll be able to choose your occupational specialism in either early years education or assisting teaching. This T Level course carries UCAS points, so is a route to university to study, for example, primary education or childhood studies.



* Taken from the Department for Education's Labour Market Information For All API – correct as of August 2023

Apprenticeships

The department offers the following apprenticeships:

- Early Years Practitioner
- Early Years Educator
- Learning Mentor
- Teaching Assistant

Please contact the Apprenticeship team to discuss your opportunities.

For more information on apprenticeships:

leedscitycollege.ac.uk/apprenticeships

0113 284 6464

apprenticeships@leedscitycollege.ac.uk

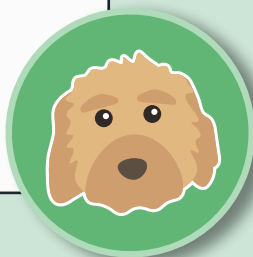
Apply Now!



Wellbeing Hub

The Wellbeing Hub is a safe and quiet space on campus for you to use when you need time out or need to speak to someone about things you may be struggling with. You can speak in confidence to any member of our team about things going on at home or in college that you're upset or concerned about. We can help get you the support you need within college and from external services. We're happy for you to come and use the Hub whenever you need to. If you just need a quiet moment, a relaxing space to catch up with your assignments or time out to do a wellbeing activity, our team and Jeffrey are here to support you.

Jeffrey is our wellbeing dog who works at Quarry Hill Campus to help reduce anxiety and stress. He enjoys cuddles, rubs, pats and strokes, and making our students feel better. You can find Jeffrey, most days, in our Wellbeing Hub.



“Sometimes when I’m feeling down just by seeing Jeffrey I feel happy and motivated to do my best.”

– Analisa



School of Social Science

Health Science & Social Care

Our range of professional courses is supported by hands-on experience through practical learning and local work placements in health and social care. You'll be taught by professionals with sector experience and will have access to our bespoke learning facilities. We work closely with large, local sector employers and are endorsed by Skills for Care and Skills for Health.

Location: Quarry Hill Campus



Follow us on social: @LCCHealthScienceSocialCare



@LCCHealthcaring



@HealthScienceandSocialCare



Careers

Nurse

In this role, you'll nurse people back to health and provide general and specialised care to the sick and injured. You'll need good medical knowledge to be able to support doctors with treatment, and will need to be personable, friendly and compassionate to support your patients. As a nurse, you could work for a public health service, such as the NHS, or you may choose to work in a private clinic.

Care Worker

As a care worker, you'll attend to the personal needs and comforts of service users. This could include providing care and support within residential and daycare establishments or in the service users' own homes. You'll need to understand health legislation, as well as being kind and caring, and willing to support those in need. You'll be patient, understanding and helpful.

Social Worker

Social workers provide information, advice and support to those who are socially excluded or experiencing crisis. You'll protect the welfare of vulnerable groups including children, young people, disabled people, the elderly and those with physical or mental illnesses. You may specialise in a field. You'll need to be well-organised and motivated to be able to manage multiple cases, and will have emotional intelligence as well as resilience.

Other careers could include:

- Medical Technician
- Psychologist
- Occupational Therapist
- Radiographer
- Sociologist
- Home Carer
- Midwife
- Youth Worker
- Family Support Worker



*Taken from the Department for Education's Labour Market Information For All API – correct as of August 2023

Courses

Wellbeing NCFE Certificate

Level 1 | Study length: 1 year full time

Designed to develop your understanding of a variety of wellbeing topics and the impact they can have on your mental and physical health, this rewarding course will show you how you can apply your knowledge in the health and social care sectors. You'll learn about stress and stress management, mental health, alcohol and diabetes awareness, combining academic study with practical skills.

Health and Social Care CACHE Extended Diploma

Level 2 | Study length: 1 year full time

Become a champion of care with this rewarding programme. You'll develop your understanding of mental health in a care context, learn about human growth and development, and practise implementing equality and diversity into the workplace. You'll also further your knowledge of communication and creative activities, alongside learning about how to keep your patients safe.

“I am now a qualified adult nurse and am still in touch with some of my tutors. I also frequently visit college to speak to students about my experience and offer advice.”

– Amanda Rodriguez, Health and Social Care student

Preparing to Work in Adult Social Care CACHE Certificate

Level 2 | Study length: 1 year full time

Advance your career in adult social care by acquiring knowledge of person-centred approaches and learning best practice in safeguarding and protecting vulnerable adults. This specialist programme will also help you learn how to maintain health and safety in multiple social care contexts, as well as how to promote equality, diversity and inclusion.

Preparing to Work in Adult Social Care CACHE Certificate

Level 3 | Study length: 1 year full time

Designed to increase your knowledge of a wide variety of support roles, this course will teach you how to apply person-centred approaches to your care of vulnerable adults. You'll increase your awareness of dementia and its impact, as well as learning how to support individuals with learning disabilities. Practical experience will be gained through placement opportunities.

Health and Social Care CACHE Technical Extended Diploma^{}**

Level 3 | Study length: two-year programme

In your first year, you'll develop the skills you need to care for others with this gratifying programme. By studying specialist areas such as psychological perspectives and infection prevention, you'll gain a deep understanding of the responsibilities of working in professional care, as well as how to safeguard and protect vulnerable adults, children and patients.

In your second year, you'll deepen your understanding of mental health, developing your research skills and protecting young people and adults – all whilst approaching your work from psychological and sociological perspectives. You'll study core modules such as anatomy and physiology, and engage in specialist pathways such as dementia care, physiology of ageing, family issues and the science of nutrition.

^{**}Important please note: Applications and recruitment to this course are currently subject to a funding review. Availability and alternative options will be made clear at point of interview.

T Level in Health

Level 3 | Study length: 2 years full time

This Health T Level is a two-year, technical study programme worth three A levels. Designed around employer needs to provide you with skills relevant to your industry, it offers a mixture of technical knowledge and practical skills specific to prepare you for your next steps. It presents an exciting opportunity for students looking to develop a career in healthcare.

This course also allows for blended classroom training and 'on the job' work experience for a minimum of 315 hours. In year 2, you'll learn clinical skills and specialise in a sector of your choice in one of the following areas: adult nursing, mental health or supporting therapies. The college also works with the local NHS trust, and the private health and social care sector to provide hands-on industry placements across all specialisms.

Health professionals

Average salary

£27,040*

Jobs are set to increase by
2,212 in the next 3 years.



* Taken from the Department for Education's Labour Market Information For All API – correct as of August 2023



School of Social Science

Public Services

Our Public Services and Military Preparation courses equip you with the skills needed to succeed in the emergency services and armed forces. We're proud of our strong links with the West Yorkshire Police, Yorkshire Ambulance Service, British Army, Royal Navy, Royal Marines and West Yorkshire Fire & Rescue which will provide a real insight into your particular area of interest.

Location: Quarry Hill Campus



Follow us on social: @LCC_PublicServices



Careers

Police Officer

As a police officer, you'll uphold law and order through the detection, prevention and investigation of criminal activity. You'll use your strong communication skills, empathy, tact and diplomacy to work alongside communities, conduct patrol duties, interview suspects and diffuse volatile situations. You'll be good at problem-solving and working in a team.

Firefighter

Firefighters provide emergency services in the event of fire, accidents or bomb alerts, as well as providing advice on fire protection. In this role, you'll need to be able to problem-solve and stay calm in emergency situations. You'll also need to be comfortable in speaking with the public and working with heights.

Prison Officer

As a prison officer, you'll participate in guarding inmates and maintaining discipline in prisons and other detention centres. You'll use your compassionate and supportive nature to focus on rehabilitation, motivating prisoners to better themselves. Attention to detail is important and your duties will vary depending on the type of prison you're working in and its level of security.

Other careers could include:

- Soldier
- Ambulance Technician
- Police Community Support Officer
- Royal Marines Commando
- Paramedic
- Prison Officer
- Paralegal
- Legal Secretary
- Youth Intervention Worker
- Youth Offending Support Worker



*Taken from the Department for Education's Labour Market Information For All API – correct as of August 2023

Courses

Introduction to Youth Work

Level 1 | Study length: 1 year full time

Are you passionate about working within your local community? If the answer's yes and you want to take the first steps to a career in youth work or community engagement, then this course is for you. An outstanding opportunity to challenge your own confidence and self-esteem, you'll work with the CATCH Community Centre to engage with young people, giving you real-life experiences and insights.

NCFE Diploma for Entry to the Uniformed Services

Level 1 | Study length: 1 year full time

Develop the self-discipline, communication, problem-solving and teamwork skills required to succeed in uniformed service careers. You'll complete fitness training, tutorials and voluntary opportunities, and will visit the uniformed services at their training centres to gain industry insight. You'll also experience adventure activities such as bouldering and kayaking.

Certificate in Youth Work Practice

Level 2 | Study length: 1 year full time

Designed for those who want to work as a youth work assistant, this Level 2 course will boost your understanding of social education with practical experience of working with young people. You'll take part in the local community by running local programmes and activities, as well as taking key learning modules on safeguarding, development and communication.



*Taken from the Department for Education's Labour Market Information For All API – correct as of August 2023

NCFE Diploma for Entry to the Uniformed Services

Level 2 | Study length: 1 year full time

Deepen your knowledge of public service and learn how to understand, combat and prevent the devastating impact of crime. You'll meet professionals to find out first-hand what it's truly like to be a first responder supporting the communities that we live in. You'll also take part in outdoor adventure and team-building activities.

NCFE Diploma/Extended Diploma for Entry to the Uniformed Services

Level 3 | Study length: 1 year full time (NCFE Diploma) (equivalent to 1.5 A levels). 2 years full time (Extended Diploma) (equivalent to 3 A levels).

Challenge yourself to excel in public service with this programme. You'll undertake riot training, experience outdoor pursuits, complete fire service fitness tests, visit barracks and leverage visits from prison officers and dog handlers to gain insight. Develop your own leadership style, problem-solve, and learn about terror and how to combat it.

T Level in Legal Services

Study length: 2 years full time

An ideal option for those who want to progress into the legal sector, this course will give you the knowledge you need to specialise in crime, criminal justice and social welfare. You'll study topics such as the fundamentals of law, security and risk, and professionalism and ethics, and will get practical skills with hands-on industry placements with leading legal firms in the region.

Apply Now!



Fire service officer

Average salary

£39,520*

*Taken from the Department for Education's Labour Market Information For All API – correct as of August 2023



NOT JUST



SUNDAY LEAGUE

School of Sport Science & Exercise

The School of Sport Science & Exercise trains students in practical and theoretical sports knowledge, allowing them to progress their careers within the sports sector. Courses lead to further study or employment, while local partnerships provide multiple exit routes for our sport students and athletes.

Location: Park Lane Campus



Follow us on social: @LCCSport



Careers

Sports Coach

Do you want the opportunity to work in a wide range of settings and share your passion for sport with others? Working as a sports coach offers a highly rewarding career helping individuals, small groups and teams across various sporting areas and abilities.

Fitness Instructor/Personal Trainer

If you want to inspire and invigorate others with your passion for fitness, this could be the job for you. You'll use your solid understanding of nutrition, physiology and different types of training in order to create personalised exercise plans that take into account an individual's fitness levels, body types, SMART goals and health factors.

Sports Therapist/Physiotherapist

Using your understanding of sport, health and common injuries, you'll restore movement and mobility to those who are injured or struggling with a medical condition. You'll need in-depth knowledge of joints, muscles, tendons, ligaments and bones to be able to devise exercise plans that strengthen the body without causing further injury.

Other careers could include:

- Health and Wellbeing Coach
- Physical Education Teacher
- Sports Analyst
- Leisure Centre Manager
- Sports Journalist
- Sports Development Officer



*Taken from the Department for Education's Labour Market Information For All API – correct as of August 2023

Courses

Introduction to Sport BTEC Certificate

Level 1 | Study length: 1 year full time

Transform your passion and enthusiasm for sport into a career. Our Introduction to Sport programme will give you an understanding of different areas of sport from coaching to event planning. You'll learn how to organise events, coach sports effectively, and create and follow exercise plans. This course combines practical and theoretical units.

Fitness Instructing (Gym) 1st4Sport Certificate

Level 2 | Study length: 1 year full time

Inspire and invigorate clients with this Fitness Instructing programme. You'll learn how to plan, deliver and evaluate safe and effective fitness sessions. You'll gain knowledge of nutrition, anatomy, health and performance. After completing this qualification, you can access the CIMSPA Exercise and Fitness Directory.

1st4Sport Certificate in Activity Leadership

Level 2 | Study length: 1 year full time

Pursue a career in leadership and coaching with this exciting programme. This course covers multiple aspects such as planning and leading activity sessions, and championing the work of your professional team and organisation. You'll gain specialist skills such as planning activities and the opportunity to regularly work in a coaching and leadership environment.



1st4Sport Level 2 Certificate in Supporting Physical Activity and Sport within the School Environment

Level 2 | Study length: 1 year full time

Contribute to the teaching of sports and benefit from pro-level sports coaching with this fantastic course. This qualification provides guidance on how to contribute to a physical education and school sport programme as a sports leader, coach and teaching assistant. You'll lead physical education and school sport activities while implementing principles of inclusion.

Coaching and Performance 1st4Sport Certificate

Level 3 | Study length: 1 year full time

Advance athletes' performance with our Coaching and Performance programme. This course covers multiple aspects of exercise, coaching and fitness. You'll learn about nutrition, psychology, leadership and tactics, and gain a thorough understanding of an athlete's lifestyle. Part of your assessment will include leading coaching sessions.

Personal Training 1st4Sport Diploma

Level 3 | Study length: 1 year full time

Take your fitness knowledge to the next level with our Personal Training programme. You'll develop your knowledge of fitness by planning, delivering and evaluating safe and effective personal training sessions. You'll also explore anatomy and physiology in exercise and health contexts.

Sport (Advanced) BTEC Extended Diploma

Level 3 | Study length: 2 years full time

Developing your sports leadership skills and teaching you how to coach for sports performance, this course will underpin your knowledge of anatomy, physiology, fitness training and more. You'll have the advantage of our exciting industry links and have the opportunity to undertake invaluable work experience in your chosen area. This course includes both examinations and coursework.

Sport and Exercise Science (Advanced) BTEC Extended Diploma

Level 3 | Study length: 2 years full time

Designed to help you understand how science and sport influence each other, you'll study the principles of anatomy and physiology, and learn about exercise, health and lifestyle. You'll study mandatory and optional modules covering specialist skills such as sports psychology, sports physiology and more. This course includes both examinations and coursework.

Sports Coaching and Development BTEC National Diploma

Level 3 | Study length: 2 years full time

Are you ready to coach sports performers to achieve optimum fitness levels? This exciting programme is equivalent to two A levels, with the added bonus of helping you enter the workforce directly as a multi-skilled coach or assistant coach. Study a range of exciting topics such as health, wellbeing and sport, applied coaching skills, and sport and leisure careers.

Sport, Fitness and Personal Training BTEC National Diploma

Level 3 | Study length: 2 years full time

Helping you towards a career as a sports fitness instructor or personal trainer, you'll be able to shape your specialism by selecting optional units. You'll also achieve an industry-recognised gym-instructing qualification. Develop your knowledge of fitness skills, the relationship between health, wellbeing and sport, as well as relevant careers.



1st4Sport Level 3 Certificate in Delivering Physical Activity and Sport within the School Environment

Level 3 | Study length: 1 year full time

Become a sports coach, teacher, leader, development officer or teaching assistant. You'll facilitate community-based sport and physical activity by planning, implementing and analysing a physical education and school sport programme. Additionally, you'll gain experience working with primary age children at local school events and competitions.

Apprenticeships

The department offers the following apprenticeships:

- Leisure Team Member
- Personal Trainer
- Community Activator Coach
- Community Sport and Health Officer
- Teaching Assistant – Sports

Please contact the Apprenticeship team to discuss your opportunities.

Sports massage therapist

Average salary

£24,000*

For more information on apprenticeships:



leedscitycollege.ac.uk/apprenticeships



0113 284 6464



apprenticeships@leedscitycollege.ac.uk

*Taken from the Department for Education's Labour Market Information For All API – correct as of August 2023



School of Travel, Food & Drink

Food & Drink

The Food & Drink department gives students the practical and theoretical knowledge required to prosper as future chefs, pastry chefs, hospitality managers or food critics. Students will get real-world experience by training in professional kitchens, as well as having opportunities to sell their creations in the student shop.

Location: Printworks Campus



Follow us on social: @LCC_TravelFoodDrink



Careers

Patisserie Chef and Baker

Do you have the patience and talent to craft artisan desserts, pastry products and chocolate petits fours? As a patisserie chef, you'll handcraft mouthwatering confections and usually be in charge of the dessert menu.

You'll have a high level of baking ability, be well-versed with kitchen operations and have a strong commitment to the industry. You'll also have a comprehensive knowledge of ingredients and will be able to follow recipes.

You'll learn how to make chocolate, biscuits, small cakes and desserts, and develop your artisan bread-making skills.

You'll have excellent time-management skills and will enjoy experimenting with new flavours and ingredients.

Chef

As a chef you'll manage sections within a professional kitchen, maintain health and safety to a high standard, and work as a team to create dishes and produce great food. The possibilities are varied and exciting – from working in fine-dining restaurants to large hotels, running your own brigade, working as a private chef or travelling the world creating mouth-watering dishes.

You'll keep up to date with current trends in the food industry and won't be afraid to experiment with ingredients and recipes to create bold new flavours.

Other careers could include:

- Executive Head Chef
- Chef de Cuisine
- Sous Chef
- Chef de Partie
- Patisserie
- Saucier (Sauce Chef)
- Boucher (Butcher)
- Banquet Chef
- Cruise Ship Chef
- Food Development
- Nutritional Chef
- Restaurant Manager
- Food Writer
- Sommelier
- Waiter/Waitress

Hospitality manager

Average salary

£25,413 ^{1*}

*Taken from the Department for Education's Labour Market Information For All API – correct as of August 2023

Courses

Hospitality and Catering City & Guilds Certificate

Entry 3 | Study length: 1 year full time

Ready to start a career in hospitality and catering? Ideal for beginners, this course will help you provide excellent customer service, as well as teaching you how to prepare basic food and drink. You'll increase your confidence through our on-site work placements and our friendly teachers will help you develop your teamwork skills.

Culinary Skills

Level 1 | Study length: 1 year full time

Designed to help you become a chef in the catering and hospitality sector, this Level 1 course will teach you how a professional kitchen works whilst boosting your cookery skills. You'll learn about food safety, allergens and different cooking methods. Great for learners coming straight from school, you'll gain employability skills and practical experience.

Culinary Skills Certificate

Level 2 | Study length: 1 year full time

Gain the knowledge and skills you need to become a professional chef with this Level 2 course. Practical tasks in the kitchen will include French preparation activities, such as prepping and cooking rice, pasta, and egg dishes, as well as learning to make stocks, soups, sauces, vegetarian and vegan food. You'll understand kitchen leadership and classic techniques which will open the door to the food industry.



Culinary Skills Diploma

Level 2 | Study length: 1 year full time

Ideal for strengthening your ability in the kitchen with techniques and dishes that require a higher level of skill, this Level 2 Diploma will help you build your confidence of handling senior tasks in a professional environment. You'll produce dishes including meat, poultry and shellfish, as well as hot and cold desserts, puddings, pastry, bread and butchery. You'll gain practical experience by producing fine-dining tasting menus and working in the college's public restaurant.

Food and Beverage Service NVQ Diploma

Level 2 | Study length: 1 year full time

Want to go above and beyond for your customers by improving your barista and beverage service skills? Regular work experience in hotels, restaurants and bars will give you the knowledge, skills and confidence needed to pursue a career as front of house in the food and drink industry.

Professional Bakery, Patisserie and Confectionery City & Guilds Certificate

Level 2 | Study length: 1 year full time

Learn how to produce mouthwatering chocolate desserts, cakes and artisan bread in this hands-on course. You'll develop practical patisserie and confectionery skills using state-of-the-art equipment, as well as gaining industry experience on a work placement which can be taken either in the UK or abroad.

Hospitality, Supervision and Leadership City & Guilds Diploma

Level 3 | Study length: 1 year full time

Get ready to supervise teams within the food and drink industry. This course will develop your leadership skills, so that you're confident supporting and coaching others to deliver exceptional service. You'll prepare for further study or employment by undertaking work experience in hotels, bars and restaurants.

Professional Cookery City & Guilds NVQ Diploma

Level 3 | Study length: 1 year full time or 1 year part-time

Designed to help you attain professional cookery standards, you'll learn to prepare and cook complex dishes whilst perfecting your presentation skills. You'll have the opportunity to work at local events to back up your theoretical knowledge with practical skills, and can choose to study part-time if you already work in the industry.

Professional Bakery, Patisserie and Confectionery City & Guilds Certificate

Level 3 | Study length: 1 year full time

Helping you develop advanced patisserie and confectionery skills, you'll learn how to produce exceptional desserts, biscuits, cakes, pastries, sponges and artisan dough products. You'll gain confidence and real-world experience by selling your products in our student shop, as well as participating in work experience opportunities in the UK or abroad.

Bakers & flour confectioners

Average salary

£19,240*



* Taken from the Department for Education's Labour Market Information For All API – correct as of August 2023

Apprenticeships

The department offers the following apprenticeships:

- Commis Chef
- Production Chef
- Hospitality Team Member
- Hospitality Supervisor
- Butcher
- Baker
- Healthcare Cleaning Operative

Please contact the Apprenticeship team to discuss your opportunities.

For more information on apprenticeships:



leedscitycollege.ac.uk/apprenticeships



0113 284 6464



apprenticeships@leedscitycollege.ac.uk



School of Travel, Food & Drink

Travel, Tourism & Aviation

Our Travel, Tourism & Aviation department provides a range of exciting courses that let students' careers take off. You can train to work as air cabin crew, passenger service agents, ground handling staff, tourism development officers and resort representatives. You'll also gain industry insight from guest speakers, relevant visits and work experience opportunities.

Location: Printworks Campus



Follow us on social: @LCC_TravelFoodDrink



Careers

Resort Representative

Ready to give your customers the holiday of a lifetime? As a resort representative, you'll be responsible for looking after groups of clients on package holidays.

You'll use your strong people skills to answer questions and provide support and guidance, and your excellent organisation and time-management skills will help you meet their high expectations.

This hugely rewarding and confidence-building role will give you a great opportunity to work in different countries.

Cabin Crew Member

You'll live the jet-set lifestyle with this role, but will need to demonstrate hard work, dedication and professionalism around the clock – and the globe!

You'll use your good organisational and people skills to provide excellent customer service to passengers, while ensuring their safety during a flight.

You'll deal with security and emergency situations, and will need to be willing to work unsociable working hours with varying shift patterns.

Passenger Service Agent

As a passenger service agent, you'll welcome and check-in passengers for their flight, and carry out jobs to prepare passengers and aircrafts for flight.

You'll need strong aviation knowledge, a solid understanding of health and safety, and excellent operational knowledge.

You'll enjoy working as part of a team, will have good customer service skills, and will be knowledgeable of safety and security procedures.

Other careers could include:

- Travel Agent
- Tourism Development Officer
- Tour Guide
- Courier
- Tourism Manager
- Tour Operator
- Ground Operator
- Aircraft Dispatcher

Courses

Introduction to Travel and Tourism City & Guilds Diploma

Level 1 | Study length: 36 weeks full time

Get ready for a career in the travel and tourism industry with this exciting course. Whether you dream of becoming a holiday rep, a member of the cabin crew or even a travel agent, this course will equip you with the necessary skills and knowledge. Combining exciting lessons with practical, skill-boosting activities, you'll be taught by industry experts on subjects ranging from customer service to promotions and advertising. Perfect if you're still deciding on your exact career specialism.

Air cabin crew

Average salary

£27,040*

Apply Now!



*Taken from the Department for Education's Labour Market Information For All API – correct as of August 2023

Certificate in Exploring the Aviation Industry

Level 1 | Study length: 1 year full time

If you dream of working in an airport or onboard an aircraft, this course is the perfect starting point. Taught by industry professionals who'll help you develop your knowledge of the industry and develop great customer service skills; you'll also put your practical skills to the test in our air cabin mock-up. Our industry links ensure excellent progression opportunities.

Please note: students on this course are expected to wear a professional uniform.

Air Cabin Crew City & Guilds Diploma

Level 2 | Study length: 1 year full time

On this exciting course, you'll acquire the customer service skills and knowledge to prepare you for an air cabin crew role. Take advantage of our industry links and air cabin simulator to gain valuable industry insight and put your theory into practice. Please note, you'll be expected to wear our designated uniform and uphold our grooming regulations.



Travel and Tourism NCFE Diploma

Level 2 | Study length: 1 year full time

Jump-start your career in travel and tourism. This course will equip you with the knowledge you need to open many different doors within the industry. As well as learning excellent customer service skills and becoming a destination expert, you'll also design your own visitor attraction.

You'll also benefit from industry guest speakers and visits to travel and tourism attractions. Please note, you'll be required to wear a uniform.

Aviation NCFE

Level 3 | Study length: 7 months

This course prepares you for employment as air cabin crew or ground operations roles, developing your knowledge of onboard operations, customer service and aviation terminology. Expert guest speakers, industry-related visits and work placements will give you real-world experience, as you gain an insight into the aviation sector taught by our team of teachers who have previously worked in the industry. Please note, we encourage professionalism so you'll be expected to wear our designated uniform.

NCFE Level 3 in Travel and Tourism

Level 3 | Study length: 1 year full time

Ever dreamt of travelling the world and being paid for it? This course will give you the knowledge and skills needed to provide memorable travel experiences and will help you become a destination expert who understands the business and specialist areas behind the tourism sector. Strong links to local partners such as Visit Leeds and Ryanair will give you valuable industry insight. Your teachers are industry experts and will prepare you for this amazing industry!

Please note, you'll be required to wear a stylish uniform.

Supported Engagement

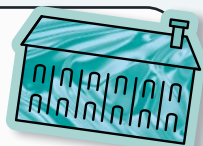
Our Supported Engagement provision is based at Somerville House, a small campus near our Printworks site. Our focus here is to support young people aged 16 to 24 to access education and employment. The students may have missed periods of school in the past, have an education, health and care plan (EHCP), or they may be at risk of not engaging in education, employment or training (NEET). We also support students who have social, emotional and mental health needs (SEMH) or special educational needs and disabilities (SEND).

Staff are SEMH specialists and trained to support students using positive reinforcement and restorative practice, to re-engage positively with education. Working in bespoke facilities you can choose between Sport & Public Services, Science, Business & IT, Art & Design, Construction & Joinery, Hospitality & Catering or Health & Social Care. Class sizes are small, staff to student ratios are high and innovative learning enables students to gain qualifications as well as valuable real-life skills.

Personal Growth & Wellbeing plus Vocational Projects Study Programme

Entry Level 3/RARPA | Study length: 1 year full-time

An innovative and exciting course taught through practical activities that encourage learning ownership, personal reflection and promote progression to further study and future employment. Learning is hands-on, enabling you to pick up real experience that will look great on your CV – boosting your employability and enhancing your future education possibilities. You can choose from a range of vocational projects and practical activities that can lead to opportunities in further education, apprenticeships or employment.



Student Life

STUDENT LIFE

From sports activities and virtual clubs to social action volunteering and work experience – the student life at Leeds City College is rich, rewarding and varied.

We want you to have a great experience at college and enjoy your time with us. The Student Life team offers enrichment activities at every campus, such as: Careers, Work Experience and Progression, Safeguarding and Wellbeing Engagement, Student Finance and Welfare Support, Enrichment, Student Union and Tutorial Support, Equality Diversity and Inclusion, and Catering Services – allowing you to get the most out of college.

Connect with others, develop new interests and have your voice heard with our many clubs, societies and leadership opportunities. If you need help or support, our mental health and wellbeing, safeguarding and financial support teams can talk you through your options. Our Careers team also has lots of information and resources to help you choose and plan future career pathways.

Student life enrichment:

College isn't just about learning, which is why we offer a range of societies, groups and sports activities to develop your skills and help you meet new friends. Not only do our student campaigns, events and trips raise awareness around important issues, they'll also give you some amazing experiences which will help you make the most of student life.

Careers, Work Experience and Progression team

Looking for advice on your next steps? Our team has you covered.

We can help you with:

- Choosing your next course
- Finding an apprenticeship
- Preparing for university
- Securing your dream job role
- Finding work experience opportunities
- Writing and developing CVs/cover letters
- Developing your employability skills
- Identifying progression pathways from your course

FIND OUT MORE



Apprenticeships at Leeds City College



If you're aged 16 or over and looking to find a job – why not work and get a qualification at the same time?

Apprenticeships are work-based training programmes designed around the needs of employers, which lead to nationally recognised qualifications. You'll be employed from the word go and receive a wage and support from a company that's committed to your development. Our training programmes can be delivered both in the workplace and at college.

As a Leeds City College apprentice you can expect:

- Excellent training at one of the best vocational colleges
- A wage and supportive employer
- Real experience and understanding of the industry you're working in
- The opportunity to go on to university with recognised industry-standard qualifications
- Progression opportunities
- Benefit from better wages long term

You could start an apprenticeship in the following industry sectors:

- Animal Care & Horticulture
- Business & Administration
- Creative & Design
- Digital & IT
- Education & Childcare
- Electrical
- Engineering and Manufacturing
- Food & Drink
- Hair & Beauty
- HR & Legal
- Marketing & Events
- Motor Vehicle
- Science
- Social Care
- Sport Science & Exercise



0113 284 6464 | apprenticeships@leedscitycollege.ac.uk

How to apply:

Whether you have an idea of the industry in which you want to work, or whether you have no idea at all and want to know more about the apprenticeships out there, we can help. If you're currently employed and want to start an apprenticeship, we can help with that too.

1.

Take a look at our vacancies.

2.

See something you like? Great! Apply for the vacancy and one of our friendly members of staff will invite you to a virtual information session.

3.

Following this session, one of our teaching staff will be in touch to arrange an interview.

If you're successful, your details will be passed to the employer – the decision to hire you sits with them, just as it does for any person applying for a job.

What if I don't know what to do?

Start with step 1: If you don't see anything that catches your eye, complete an enquiry form.

Step 2: A member of our team will get in touch, and you'll be invited to the virtual information session.

Step 3: Our team will signpost you to the live vacancies and while we can't match you to vacancies, we're here to help answer your questions.

I'm in employment

Step 1: Speak with your employer – if they're happy to support you through an apprenticeship, progress to step 2.

Step 2: Complete our enquiry form.

Step 3: One of our Business Development Executives will contact your employer to explain how we can assist them in the process of setting up the apprenticeship.



Vacancies here!

T Levels

T-LEVELS

Are you looking to pursue further education after your GCSEs but seeking a different approach? T Levels offer a unique opportunity to gain industry-specific skills and qualifications that can jump-start your career. Say goodbye to the traditional classroom-based approach and embrace a hybrid learning style.

Designed as an alternative to A levels for 16 to 19-year-olds, T Levels are a two-year programme that focuses on practical skills that are highly valued by employers. This type of learning is ideal for individuals who benefit from both theoretical and practical experience, as the course is made up of 80% classroom work and 20% work experience. By choosing a T Level, you can specialise in a specific subject and gain valuable skills and opportunities for your future.

Our tutors have real industry experience, and will teach you all the essential principles of your chosen sector in the classroom. You'll also get to explore the practical side of work, through a minimum 45-day industry placement with a local employer. Not only will you learn better skills for your future employment, but you may also land a paid job directly from your placement. T Levels can also lead to higher education, either through a degree course or a higher apprenticeship – so you can earn while you learn.

Scan for more
information



At Leeds City College, T Levels include courses in:

- Digital Production, Design & Development
- Education & Childcare
- Health & Science
- Business & Administration
- Engineering & Manufacturing
- Legal, Finance & Accounting
- Animal Care & Management
- Craft & Design
- Hair & Beauty



English for Speakers of Other Languages (ESOL)

Welcome | Bienvenue | Bine Ati Venit Witamy | Bem Vinda | Bì xêr hatì

Students aged 16 to 19

Is English not your first language?
Would you like to improve your
written and spoken English?

Discover English for Speakers of Other Languages (ESOL) – also known as English as an Additional Language (EAL) – at Leeds City College.

- Achieve English and maths qualifications
- Learn at your personal level of English
- 92% of students move on to Leeds City College's further education courses
- Study with over 200 other 16–19 students from different countries
- Train for work and improve your English in college

For 16–19 courses you can also apply at our North Street Campus, 223 North Street, Leeds LS7 2AA.

Scan for more information



Adult students

Our dedicated ESOL teachers are also here to help adult students improve their written and spoken English.

Strengthen your skills with our courses. We're an award-winning department with one of the highest achievement rates in the UK.

Our teachers are committed to giving every student the very best learning experience. In 2017, we were named FE Team of the Year by the prestigious Pearson Teaching Awards, and in 2022 we were graded 'Outstanding' by Ofsted.

We welcome students at all levels, from beginner to GCSE Maths and English. Many of our graduates have moved into employment or further study.

To apply:



leedscitycollege.ac.uk/schools/esol



0113 386 1997



contact@leedscitycollege.ac.uk

STEM

STEM stands for science, technology, engineering and maths – academic disciplines rapidly changing our careers and world. With technological and scientific discoveries being made all the time, this is an exciting world to work in – and vacancies and skills shortages create great job opportunities for all.

Demand for people working in STEM is high and is set to increase even more over the coming years. Having STEM skills not only makes you very employable, it also helps you identify problems, think creatively and analyse information more effectively.

We call this set of skills the STEM7:

1. Creative thinking
2. Problem solving
3. Communication
4. Collaborative working
5. Intellectual curiosity
6. Flexibility
7. Data-driven decision-making

At Leeds City College, we offer a range of science, technology (digital and IT), engineering and maths courses to help you enter the world of STEM. You can also strengthen your English and communication skills on many of our other courses – skills that are vital for numerous industries. On completion, you could go straight into employment or on to university to further strengthen your skills.

Studying a STEM course will allow you to progress on to a range of jobs in:

- Software Development
- Health
- Data Security
- Engineering
- Motor Vehicle
- Laboratories
- Renewable Energy and Environment
- Psychology
- Games Development
- Computer Programming
- Medical Science
- Actuary
- Conservation
- Artificial Intelligence
- Petroleum



Foundation Studies

The Foundation Studies department offers a tailored curriculum that promotes self-sufficiency, community integration, physical and mental wellness, and career prospects. This department has been awarded a 'Good' rating by Ofsted, and every course features a flexible syllabus that caters to individual needs and aligns with the Preparation for Adulthood Agenda (PFA).

The Foundation Studies programmes are ideal for individuals with disabilities, learning difficulties, and/or challenges with managing behaviour and emotional regulation. Our courses aim to equip learners with the necessary skills to live more independently and secure a suitable job in the future.

We offer a next steps employment course, where learners can enhance their job-related abilities. Our pre-internship offering allows students to work towards developing real work skills and experiences that give them the entry requirements to progress into supported internships.

Our facilities are designed with our students at the centre, providing additional support with assistive technology, and personal and medical care.

This School can be found at the following locations:

- Joseph Priestley Centre, Beeston
- The Vine

Scan here:



With our supported internships, students have the opportunity to work for recognised brands such as Leeds City Council, Entertainer Toy Shop, National Express and more.

14+ Academies

Based at Park Lane Campus, the 14+ Academies help students with their GCSEs, while adding a practical element to their education. The academy provides an alternative atmosphere for students who may not enjoy conventional school environments but are motivated and keen to succeed in their studies. A recent Ofsted report graded this provision as 'Outstanding' in recognition of our stimulating environment and inclusive community.

In addition to learning traditional subjects such as English, maths and science, you'll gain expertise and understanding in other areas valued by employers. You'll also have the opportunity to complete work experience and engage in vocational training in a field you aim to work in. Our skilled staff members will provide support to help you progress and reach your goals.

- Average class sizes of less than 20
- Average 98% academic pass rate
- Personalised support with moving on to further education, apprenticeships and employment, with 100% progression rate for our learners

Students thrive in the highly supportive college environment and make outstanding progress.

– Ofsted report, 2018

“Here like from the get-go it was just amazing. Everyone was so nice, the teachers and the students, like I’d never met so many just welcoming people.”

“Since coming into 14+, my grades have shot up so fast in the space of a year and a half. At my old school I wasn’t really confident around people whereas I can be more open here and like, be more confident around my friends.”

See for yourself





iLearn

Our iLearn hubs offer an ideal space for independent learning, quiet reading or one-on-one sessions with a tutor. With a vast collection of over 20,000 ebooks, as well as novels, graphic novels and educational resources, the hubs are a perfect source of inspiration. Our study support officers are always available to assist with any queries and provide a welcoming atmosphere.

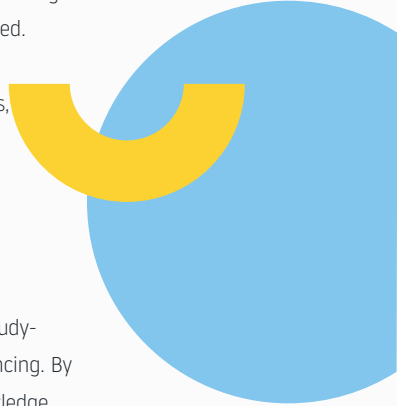
Our iLearn mentors are dedicated to help you achieve your goals. We understand that every student has unique needs, and our support services are tailored to each individual. Whether you're seeking advice about specific work or more general guidance, you can request a private chat with one of our mentors. During the session, we'll work together to identify key areas for improvement and provide help, recommend tasks and offer advice on overcoming any challenges you may be facing. This is your time, and we're here to help you succeed.

In addition to offering personalised one-to-one support and workshops, we also organise regular competitions and activities that are open to all students. These competitions, ranging from reading challenges to poetry and pixel art competitions, allow you to showcase your skills and creativity while also learning and having fun.

We're dedicated to improving your learning experience by providing study-skills sessions that cover important skills such as research and referencing. By participating in these sessions and activities, you'll gain valuable knowledge and skills that will help shape your future and pave the way for success.

"I think that the tutors at Leeds City College – you can get along really well with them, there's mutual respect and they ensure that we know what we're doing at all times and there is humour about it, because that builds a positive environment to work in."

– Dan, Musical Theatre student



Safeguarding and Wellbeing

Safeguarding

We're committed to making sure all students and staff are protected from harm. All staff are trained in safeguarding and child protection, and our dedicated Safeguarding team is on hand for advice and support. Don't stay silent, we're here for you.

Mental health and wellbeing support

It's always good to talk. Our counsellors and mental health officers can offer wellbeing support such as counselling, guided self-help and a safe space to talk; our mental health first aiders can direct you to support services; and you can follow our wellbeing tips during exam season. If you're worried about someone else, our Safeguarding team is also available for support and advice.

Our four-legged friends

An important part of our wellbeing team are our therapy dogs, Jeffrey, Molly and Henry. Based at Quarry Hill (Jeffrey), Park Lane (Molly) and the Joseph Priestley Centre and The Vine (Henry), our furry friends offer a helping paw when you need it.

For more information and tips on mental health, visit: mindmate.org.uk

For more help and advice for Leeds locals, visit: mindwell-leeds.org.uk

Academic support

You'll receive academic support from your teachers and coaching tutors. You can also contact our iLearn team for skills training, one-to-one advice, workshops or engaging learning materials. Or visit our Independent Learning Zones to access a range of resources such as books, Google Chromebooks, CDs and DVDs. Additionally, you can take part in exam preparation sessions.

Tutorials

All students take part in tutorial sessions, where we cover a variety of personal, social, citizenship and health topics, in response to contemporary current affairs. Different learning environments – from creative writing and debates to music and investigation – encourage curiosity, collaborative discussions and learning in a safe space. These sessions support students to identify and develop skills which can support their chosen career pathway.



Safeguarding and Wellbeing

Equality, diversity and inclusion (EDI)

Equality, diversity and inclusion (EDI) is woven into the culture here at Leeds City College. We foster a climate of respect and dignity, actively challenge prejudice and work within the spirit of the Equality Act of 2010. We work to remove barriers for all our students and employees by providing appropriate education, training and development. We value the diversity of our students and staff, and encourage all at Leeds City College to live by the values of inclusion, diversity and equality.

Restorative practice (RP)

Our staff are trained to follow a restorative approach. Restorative practice (RP) is a process based around the power of communication, and sits at the heart of our college culture. It looks at building resilience and connections, developing relationships and understanding the power of communication.

Prevent

We take terrorism seriously, so we closely follow the Prevent scheme outlined by the government. We aim to prevent people from being drawn into all forms of extremism by educating and raising awareness of issues that could endanger or cause harm.



LEEDS CITY COLLEGE STUDENTS' UNION



Leeds City College Students' Union (LCCSU) works in partnership with Leeds City College to improve the education of students, promote student-led activity and improve the overall student experience. Our dedicated officers and president are here to ensure all aspects of your college experience are fantastic. We have plenty of exciting social events, trips, activities and societies for you to join, and volunteering and awareness campaigns for you to support. So what are you waiting for? Get to know us on campus and if you have any questions email us at su.enquiries@leedscitycollege.ac.uk

STUDENT VOICE

It's important for students to have their say and our Students' Union officers act as representatives for different groups. There are opportunities for you to become a student leader, have your say at college and in the city, and vote in our yearly elections.

Find out more



ACTIVITIES AND SOCIETIES

We want you to have the best time at college and our student societies offer you the chance to meet learners from across college who share your interests or passions.

Here are some of our most popular societies:

- Basketball Society
- Gaming Society
- LGBTQ+ Society
- Afro Caribbean Society
- Islamic Society
- Dance Society
- Gardening Society



“Leeds City College has an incredibly supportive community of staff and students. The Students' Union ensures that all students are represented at all levels of the college. From Student Voice campaigns to social trips we are here to make your college experience the best it can be.”

– A message from Qasim Hussain LCCSU President

Support

Scan here:



Support with disabilities and learning difficulties

If you have a support need or disability, we'll take an inclusive approach to get you the help and interventions you need to progress – no matter your age or the stage of your learning journey.

We also have a dedicated SEND team to make sure that students have support throughout the learner journey with us. For those with an education, health and care plan (EHCP), our committed team will ensure appropriate interventions are put in place and monitored. For more information, please scan the QR code or email SENDteam@leedscitycollege.ac.uk.

Support with finance

Don't let financial concerns hold you back. At college, there are lots of ways we can support you with course-related costs such as travel passes, meal support, college equipment, uniforms, childcare and much more. For more information, please visit the Financial and Welfare Support page by scanning the QR code.

Find out more



Support with childcare

The Care to Learn scheme pays up to £160 per child, per week for student parents aged 20 and under. The college's Childcare Adviser can help you find a childcare provider and apply for funding.

For more information, visit: caretolearn.gov.uk

Older students may be eligible for help with childcare through our student bursary funds.

Visit: childcarechoices.gov.uk

Support with exams

For exams, we're able to assess for Exam Access Arrangements (EAA). Where there is a need for EAA during exams this can be in the form of readers, scribes, prompts, additional time or rest breaks. Where required, assistive technology, software and/or materials in alternative formats can also be provided to accommodate your needs. In some occasions, a smaller room can be sourced for examinations.

Support with studies

We offer advice and assistance to you both before and during exams – ensuring you get the support you need and you're equipped to succeed. If you have any questions, concerns or just need to talk to someone, coaching tutors within each department will be happy to help.

Careers support

Once you're a student with us, you can access additional career or progression support. Our Careers, Work Experience & Progression team in Student Life can provide advice and connect you with career advisers. Find out more information by scanning the QR code.

Support for children looked after and care leavers

If you're a child looked after or care leaver, we're committed to supporting you both before you start your course and throughout your time with us. We have a discreet support team that works collaboratively with young people, social workers, teachers, carers, SENCos and virtual schools, to ensure you have a smooth transition to further education. For more information, please scan the QR code.

Careers Support

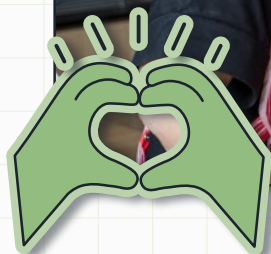


FIND OUT MORE



"The tutors are great for a number of reasons ... they know how to have a bit of fun and not put pressure on you – and they're great, they're always there to give you information if you need it."

– Rachel, Acting student



Special Educational Needs and Disabilities

Are you a student with special educational needs and disabilities that needs specialist support? We're here to help.

Our friendly SEND team acts as a safety net for students. They ensure measures are put in place so that everyone has a positive experience at the college and their needs are supported.

By the end of college, our helpful team will ensure you've developed skills for adulthood, including employment, community, inclusion, independent living and health.

Wave 1 – Quality First Teaching+ includes:

- In-class differentiation, such as smaller tasks and visual handouts
- Coaching tutor or key person support
- Personalised timetable
- iPad or Chromebooks
- Referrals to Child and Adolescent Mental Health Services (CAMHS), careers, and mental health and wellbeing services
- Risk assessments
- Medical storage and access arrangements

Wave 2 – Targeted Support includes:

- Small group work
- Assistive technology (including hearing loops, radio aids and magnifiers)
- Exam access arrangements
- Independent time out of class
- Peer mentoring
- Assistive read and write software
- Overlays and coloured paper
- Dictaphones and video recording equipment
- Aids and adaptations (including adjustable tables and chairs)
- Learning support assistants
- Specialist SEND professionals provide advice and guidance to staff and students

Wave 3 – Specialist/High Needs Support includes:

- Meet and greets
- Familiarisation of campus and rooms
- Personal care (including hoists at main campuses and changing tables)
- In/out of class support
- Mobility support
- Therapeutic interventions
- Travel training
- Independent living skills
- Occupational therapist referrals

We also have dedicated quiet and safe spaces – for students during times of crisis, sensory overload, mental health issues or periods of sudden change.

Support will be assessed on an individual basis and will vary depending on your assessed needs or education, health and care plan (EHCP).

A support plan will be created with the student and, if appropriate, will be shared with tutors and co-professionals such as learning support assistants or teaching assistants.

For more information on SEND, please scan the QR code.

If you have any further questions, including EHCP queries, contact: SENDteam@leedscitycollege.ac.uk



Contact us

Course enquiries

Call: 0113 386 1997 or email: contact@leedscitycollege.ac.uk

Apprenticeship enquiries

Call: 0113 284 6464 or email apprenticeships@leedscitycollege.ac.uk

For more contact details, including maps, directions, travel information and contacts for all of our community centres, please go online at: leedscitycollege.ac.uk/contact

Our campuses

Joseph Priestley Centre, Beeston
Burton Avenue
Leeds LS11 5ER

Mabgate Campus
74–76 Mabgate
Leeds LS9 7EA

North Street Centre
223 North Street
Sheepscar
Leeds LS7 2AA

Park Lane Campus
Park Lane
Leeds LS3 1AA

Printworks Campus
Hunslet Road
Leeds LS10 1JY

Quarry Hill Campus
Playhouse Square
Leeds LS2 7BS

Somerville House
Leathley Road
Leeds LS10 1BG

Temple Newsam Home Farm
Temple Newsam Road
Leeds LS15 0AE

The Vine
Torre Drive
Burmantofts
LS9 7DH



Disclaimer: The information contained in this guide is accurate at the time of printing, but changes may take place. Some variation may occur as a result of circumstances beyond our control. Please see our website – leedscitycollege.ac.uk – for the most up-to-date information regarding our courses and support for students.

Leeds City College is a member of Luminate Education Group

Open Events

4 October 2023

4–7pm

16 November 2023

4–7pm

20 January 2024

10am–1pm

20 March 2024

4–7pm

16 May 2024

4–7pm



leedscitycollege.ac.uk/events



0113 386 1997



contact@leedscitycollege.ac.uk



MIX
Paper from
responsible sources
FSC® C009236